

NORTH ATLANTIC RIGHT WHALE (*Eubalaena glacialis*): Western Atlantic Stock

STOCK DEFINITION AND GEOGRAPHIC RANGE

The western North Atlantic right whale population ranges primarily from calving grounds in coastal waters of the southeastern United States to feeding grounds in New England waters and the Canadian Bay of Fundy, Scotian Shelf, and Gulf of St. Lawrence. Knowlton *et al.* (1992) reported several long-distance movements as far north as Newfoundland, the Labrador Basin, and southeast of Greenland. In addition, recent resightings of photographically identified individuals have been made off Iceland, in the old Cape Farewell whaling ground east of Greenland (Hamilton *et al.* 2007), northern Norway (Jacobsen *et al.* 2004), and the Azores (Hamilton *et al.* 2009). The September 1999 Norwegian sighting represents one of only two published sightings this century of a right whale in Norwegian waters, and the first since 1926. Together, these long-range matches indicate an extended range for at least some individuals and perhaps the existence of important habitat areas not presently well described. The few published records from the Gulf of Mexico (Moore and Clark 1963; Schmidly *et al.* 1972) represent either distributional anomalies, normal wanderings of occasional animals, or a more extensive historic range beyond the sole known calving and wintering ground in the waters of the southeastern United States. Whatever the case, the location of much of the population is unknown during the winter. Offshore (greater than 30 miles) surveys flown off the coast of northeastern Florida and southeastern Georgia from 1996 to 2001 had 3 sightings in 1996, 1 in 1997, 13 in 1998, 6 in 1999, 11 in 2000 and 6 in 2001 (within each year, some were repeat sightings of previously recorded individuals). Several of the years that offshore surveys were flown were some of the lowest count years for calves and for numbers of right whales in the Southeast recorded since comprehensive surveys began in the calving grounds. Therefore, the frequency with which right whales occur in offshore waters in the southeastern U.S. remains unclear.

Research results suggest the existence of six major habitats or congregation areas for western North Atlantic right whales: the coastal waters of the southeastern United States; the Great South Channel; Georges Bank/Gulf of Maine; Cape Cod and Massachusetts Bays; the Bay of Fundy; and the Scotian Shelf. However, movements within and between habitats are extensive. In 2000, one whale was photographed in Florida waters on 12 January, then again eleven days later (23 January) in Cape Cod Bay, less than a month later off Georgia (16 February), and back in Cape Cod Bay on 23 March, effectively making the round-trip migration to the Southeast and back at least twice during the winter season (Brown and Marx 2000). Results from satellite tags clearly indicate that sightings separated by perhaps two weeks should not necessarily be assumed to indicate a stationary or resident animal. Instead, telemetry data have shown rather lengthy and somewhat distant excursions, including into deep water off the continental shelf (Mate *et al.* 1997; Baumgartner and Mate 2005). Systematic surveys conducted off the coast of North Carolina during the winters of 2001 and 2002 sighted 8 calves, suggesting the calving grounds may extend as far north as Cape Fear. Four of the calves were not sighted by surveys conducted further south. One of the cows photographed was new to researchers, having effectively eluded identification over the period of its maturation (McLellan *et al.* 2004). There is also at least one recent case of a calf apparently being born in the Gulf of Maine (Patrician *et al.* 2009).

New England waters are important feeding habitats for right whales, which feed in this area primarily on copepods (largely of the genera *Calanus* and *Pseudocalanus*). Research suggests that right whales must locate and exploit extremely dense patches of zooplankton to feed efficiently (Mayo and Marx 1990). These dense zooplankton patches are likely a primary characteristic of the spring, summer, and fall right whale habitats (Kenney *et al.* 1986, 1995). While feeding in the coastal waters off Massachusetts has been better studied than in other areas, right whale feeding has also been observed on the margins of Georges Bank, in the Great South Channel, in the Gulf of Maine, in the Bay of Fundy, and over the Scotian Shelf. The characteristics of acceptable prey distribution in these areas are beginning to emerge (Baumgartner *et al.* 2003; Baumgartner and Mate 2003). NMFS (National Marine Fisheries Service) and Provincetown Center for Coastal Studies aerial surveys during springs of 1999-2006 found right whales along the Northern Edge of Georges Bank, in the Great South Channel, in Georges Basin, and in various locations in the Gulf of Maine including Cashes Ledge, Platts Bank, and Wilkinson Basin. Analysis of the sightings data has shown that utilization of these areas has a strong seasonal component (Pace and Merrick 2008). The consistency with which right whales occur in such locations is relatively high, but these studies also highlight the high interannual

variability in right whale use of some habitats (Pendleton *et al.* 2009) .

Genetic analyses based upon direct sequencing of mitochondrial DNA (mtDNA) have identified 7 mtDNA haplotypes in the western North Atlantic right whale, including hetroplasmly that led to the declaration of the 7th haplotype (Malik *et al.* 1999, McLeod and White 2010). Schaeff *et al.* (1997) compared the genetic variability of North Atlantic and southern right whales (*E. australis*), and found the former to be significantly less diverse, a finding broadly replicated by Malik *et al.* (2000). The low diversity in North Atlantic right whales might be indicative of inbreeding, but no definitive conclusion can be reached using current data. Additional work comparing modern and historic genetic population structure, using DNA extracted from museum and archaeological specimens of baleen and bone, has suggested that the eastern and western North Atlantic populations were not genetically distinct (Rosenbaum *et al.* 1997; 2000). However, the virtual extirpation of the eastern stock and its lack of recovery in the last hundred years strongly suggests population subdivision over a protracted (but not evolutionary) timescale. Genetic studies concluded that the principal loss of genetic diversity occurred prior to the 18th century (Waldick *et al.* 2002). However, revised conclusions that nearly all the remains in the North American Basque whaling archaeological sites were bowhead whales and not right whales (Rastogi *et al.* 2004) contradict the previously held belief that Basque whaling during the 16th and 17th centuries was principally responsible for the loss of genetic diversity.

High-resolution (using 35 microsatellite loci) genetic profiling has been completed for 66% of all identified North Atlantic right whales through 2001. This work has improved our understanding of genetic variability, number of reproductively active individuals, reproductive fitness, parentage and relatedness of individuals (Frasier *et al.* 2007).

One emerging result of the genetic studies is the importance of obtaining biopsy samples from calves on the calving grounds. Only 60% of all known calves are seen with their mothers in summering areas, when their callosity patterns are stable enough to reliably make a photo-ID match later in life. The remaining 40% are not seen on a known summering ground. Because the calf's genetic profile is the only reliable way to establish parentage, if the calf is not sampled when associated with its mother early on, then it is not possible to link it with a calving event or to its mother, and information such as age and familial relationships is lost. From 1980 to 2001, there were 64 calves born that were not sighted later with their mothers and thus unavailable to provide age-specific mortality information (Frasier *et al.* 2007). An additional interpretation of paternity analyses is that the population size may be larger than was previously thought. Fathers for only 45% of known calves have been genetically determined. However, genetic profiles were available for 69% of all photo-identified males (Frasier 2005). The conclusion was that the majority of these calves must have different fathers that cannot be accounted for by the unsampled males and the population of males must be larger (Frasier 2005). This inference of additional animals that have never been captured photographically and/or genetically suggests the existence of habitats of potentially significant use that remain unknown. Since 2006, collaborators have sampled approximately 66% of the calves detected in the wintering grounds.

POPULATION SIZE

The western North Atlantic minimum stock size is based on a census of individual whales identified using photo-identification techniques. A review of the photo-ID recapture database as it existed on 21 October 2011 indicated that 425 individually recognized whales in the catalog were known to be alive during 2009. Whales catalogued by this date included 20 of the 39 calves born during that year. Thus adding the 19 calves not yet catalogued brings the minimum number alive in 2009 to 444 (Figure 1). This number represents a minimum population size. This count has no associated coefficient of variation.

Previous estimates using the same method with the added assumption that whales seen within the previous seven years were still alive have resulted in counts of 295 animals in 1992 (Knowlton *et al.* 1994) and 299 animals in 1998 (Kraus *et al.* 2001). An International Whaling Commission (IWC) workshop on status and trends of western North Atlantic right whales gave a minimum direct-count estimate of 263 right whales alive in 1996 and noted that the true population was unlikely to be substantially greater than this (Best *et al.* 2001).

Historical Abundance

An estimate of pre-exploitation population size is not available. Basque whalers were thought to have taken right whales during the 1500s in the Strait of Belle Isle region (Aguilar 1986), however, recent genetic analysis has shown that nearly all of the remains found in that area are, in fact, those of bowhead whales (Rastogi *et al.* 2004; Frasier *et al.* 2007). The stock of right whales may have already been substantially reduced by the time whaling was begun by colonists in the Plymouth area in the 1600s (Reeves *et al.* 2001; Reeves *et al.* 2007). A modest but persistent whaling effort along the coast of the eastern U.S. lasted three centuries, and the records include one report of 29 whales killed

in Cape Cod Bay in a single day during January 1700. Based on incomplete historical whaling data, Reeves and Mitchell could conclude only that there were at least hundreds of right whales present in the western North Atlantic during the late 1600s. Reeves *et al.* (1992) plotted a series of population trajectories using historical data, assuming a present-day population size of 350 animals. The results suggested that there may have been at least 1,000 right whales in the population during the early to mid-1600s, with the greatest population decline occurring in the early 1700s. The authors cautioned, however, that the record of removals is incomplete, the results were preliminary, and refinements are required. Based on back calculations using the present population size and growth rate, the population may have numbered fewer than 100 individuals by 1935 when international protection for right whales came into effect (Hain 1975; Reeves *et al.* 1992; Kenney *et al.* 1995). However, little is known about the population dynamics of right whales in the intervening years.

Minimum Population Estimate

The western North Atlantic population size was estimated to be at least 444 individuals in 2009 based on a census of individual whales identified using photo-identification techniques. This value is a minimum and does not include animals that were alive prior to 2008, but not recorded in the individual sightings database as seen during 1 December 2008 to 21 October 2011 (note that matching of photos taken during 2010-2011 was not complete at the time these data were received).

Current Population Trend

The population growth rate reported for the period 1986-1992 by Knowlton *et al.* (1994) was 2.5% (CV=0.12), suggesting that the stock was showing signs of slow recovery, but that number may have been influenced by discovery phenomenon as existing whales were recruited to the catalog. Work by Caswell *et al.* (1999) suggested that crude survival probability declined from about 0.99 in the early 1980s to about 0.94 in the late 1990s. The decline was statistically significant. Additional work conducted in 1999 was reviewed by the IWC workshop on status and trends in this population (Best *et al.* 2001); the workshop concluded based on several analytical approaches that survival had indeed declined in the 1990s. Although capture heterogeneity could negatively bias survival estimates, the workshop concluded that this factor could not account for the entire observed decline, which appeared to be particularly marked in adult females. Another workshop was convened by NMFS in September 2002, and reached similar conclusions regarding the decline in the population (Clapham 2002). At the time, no one examined the early part of the recapture series for excessive retrospective recaptures which had the potential to positively bias survival as the catalog was being developed.

An increase in mortality in 2004 and 2005 was cause for serious concern (Kraus *et al.* 2005). Calculations based on demographic data through 1999 (Fujiwara and Caswell 2001) indicated that this mortality rate increase would reduce population growth by approximately 10% per year (Kraus *et al.* 2005). Of those mortalities, six were adult females, three of which were carrying near-term fetuses. Furthermore, four of these females were just starting to bear calves, losing their complete lifetime reproduction potential. Strong evidence for flat or negative growth exists in the time series of minimum number alive during 1998-2000, which coincided with very low calf production, 2004 and 2005 appear to show good growth (Figure 1).

Examination of the minimum number alive population index calculated from the individual sightings database, as it existed on 21 October 2011, for the years 1990-2009 (Figure 1) suggests a positive and slowly accelerating trend in population size. These data reveal a significant increase in the number of catalogued whales with a geometric mean growth rate for the period of 2.6%.

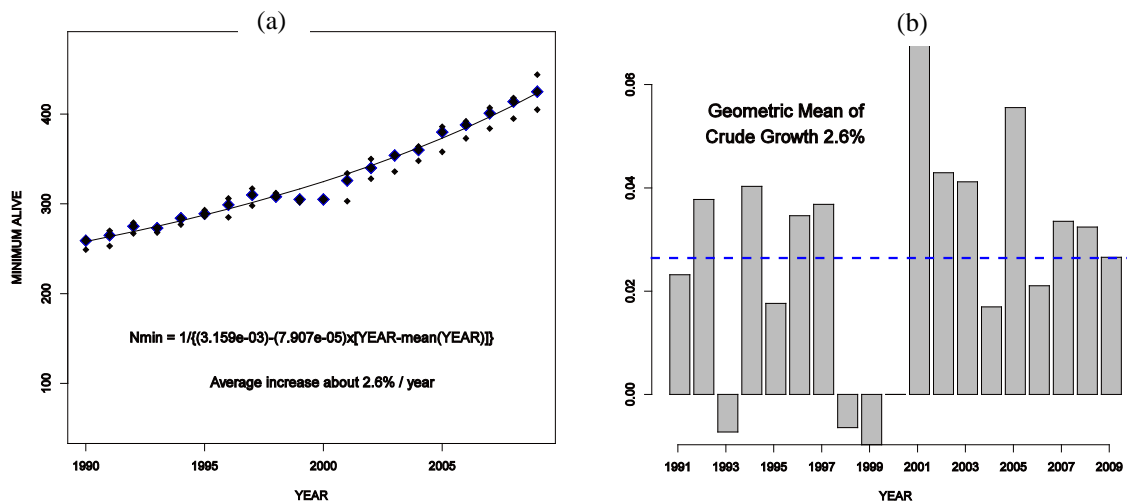


Figure 1. Minimum number alive (a) and crude annual growth rate (b) for cataloged North Atlantic right whales. Minimum number (N) of cataloged individuals known to be alive in any given year includes all whales known to be alive prior to that year and seen in that year or subsequently plus all whales newly cataloged that year. Cataloged whales may include some but not all calves produced each year. Bracketing the minimum number of cataloged whales is the number without calves (below) and that plus calves above, the latter which yields N_{min} for purposes of stock assessment. Mean crude growth rate (dashed line) is the exponentiated mean of $\log_e [(N_{t+1}-N_t)/N_t]$ for each year (t).

The minimum number alive may increase slightly in later years as analysis of the backlog of unmatched but high-quality photographs proceeds. For example, the minimum number alive for 2002 was calculated to be 313 from a 15 June 2006 data set and revised to 325 using the 30 May 2007 data set.

CURRENT AND MAXIMUM NET PRODUCTIVITY RATES

During 1980-1992, 145 calves were born to 65 identified cows. The number of calves born annually ranged from 5 to 17, with a mean of 11.2 (SE=0.90). The reproductively active female pool was static at approximately 51 individuals during 1987-1992. Mean calving interval, based on 86 records, was 3.67 years. There was an indication that calving intervals may have been increasing over time, although the trend was not statistically significant ($P=0.083$) (Knowlton *et al.* 1994).

Total reported calf production and calf mortalities from 1993 to 2009 are shown below in Table 1. The mean calf production for this seventeen year period was 17.2 (15.3-19.4; 95% C.I.). During the 2004 and 2005 calving seasons three adult females were found dead with near-term fetuses.

An updated analysis of calving intervals through the 1997/1998 season suggests that the mean calving interval increased since 1992 from 3.67 years to more than 5 years, a significant trend (Kraus *et al.* 2001). This conclusion was supported by modeling work reviewed by the IWC workshop on status and trends in this population (Best *et al.* 2001); the workshop agreed that calving intervals had indeed increased and further that the reproductive rate was approximately half that reported from studied populations of southern right whales, *E. australis*. A workshop on possible causes of reproductive failure was held in April 2000 (Reeves *et al.* 2001). Factors considered included contaminants, biotoxins, nutrition/food limitation, disease, and inbreeding problems. While no conclusions were reached, a research plan to further investigate this topic was developed. Analyses completed since that workshop found that in the most recent years, calving intervals were closer to 3 years (Kraus *et al.* 2007).

An analysis of the age structure of this population suggests that it contains a smaller proportion of juvenile whales than expected (Hamilton *et al.* 1998; Best *et al.* 2001), which may reflect lowered recruitment and/or high juvenile mortality. Calf and perinatal mortality was estimated by Browning *et al.* (2010) to be between 17 and 45 animals during the period 1989 and 2003. In addition, it is possible that the apparently low reproductive rate is due in part to an unstable age structure or to reproductive senescence on the part of some females. However, few data are available on either factor and senescence has not been documented for any baleen whale.

The maximum net productivity rate is unknown for this stock. For purposes of this assessment, the maximum net productivity rate was assumed to be 0.04. This value is based on theoretical modeling showing that cetacean populations may not grow at rates much greater than 4% given the constraints of their reproductive life history (Barlow *et al.* 1995).

Table 1. North Atlantic right whale calf production and mortality, 1993-2010.		
Year ^a	Reported calf production	Reported calf mortalities
1993	8	2
1994	9	0
1995	7	0
1996	22	3
1997	20	1
1998	6	1
1999	4	0
2000	1	0
2001	31	4
2002	21	2
2003	19	0
2004	17	1
2005	28	0
2006	19	2
2007	23	2
2008	23	2
2009	39	1
2010	19	0

a. includes December of the previous year

POTENTIAL BIOLOGICAL REMOVAL

Potential biological removal (PBR) is the product of minimum population size, one-half the maximum net productivity rate and a recovery factor for endangered, depleted, threatened stocks, or stocks of unknown status relative to OSP (MMPA Sec. 3. 16 U.S.C. 1362; Wade and Angliss 1997). The recovery factor for right whales is 0.10 because this species is listed as endangered under the Endangered Species Act (ESA). The minimum population size is 444. The maximum productivity rate is 0.04, the default value for cetaceans. PBR for the Western Atlantic stock of the North Atlantic right whale is 0.9.

ANNUAL HUMAN-CAUSED SERIOUS INJURY AND MORTALITY

For the period 2006 through 2010, the minimum rate of annual human-caused mortality and serious injury to right whales averaged 3.0 per year (U.S. waters, 2.4; Canadian waters, 0.6). This is derived from two components: 1) incidental fishery entanglement records at 1.8 per year (U.S. waters, 1.6; Canadian waters, 0.2), and 2) ship strike records at 1.2 per year (U.S. waters, 0.8; Canadian waters, 0.4). Of the 8 reported fisheries entanglements from U. S. waters during this 5-year time period that were classified as serious injury or mortality, 5 were reported before the Atlantic Large Whale Take Reduction Plan's sinking-groundline rule went into effect in April 2009, and 3 were reported after enactment of the rule. Of the 4 reported ship strike serious injury and mortalities from U.S. waters during this 5-year time period, 3 were in 2006 (prior to the speed limit rule which went into effect in December 2009), and 1 was in 2010, after the rule was in effect. Statistical analysis of the effectiveness of both of these rules is underway. Beginning with the 2001 Stock Assessment Report, Canadian records were incorporated into the mortality and serious injury rates of this report to reflect the effective range of this stock. It is also important to stress that serious injury determinations are made based upon the best available information; these determinations may change with the availability of new information (Cole *et al.* 2005). For the purposes of this report, discussion is primarily limited to those records considered confirmed human-caused mortalities or serious injuries. For more information on determinations for this period, see Henry *et al.* (2012). Annual rates calculated from detected mortalities should not be considered an unbiased estimate of human-caused mortality, but they represent a definitive lower bound. Detections are haphazard, incomplete and not the result of a designed sampling scheme. As such they represent a minimum

estimate of human-caused mortality which is almost certainly biased low.

Background

The details of a particular mortality or serious injury record often require a degree of interpretation. The assigned cause is based on the best judgment of the available data; additional information may result in revisions. When reviewing Table 2 below, several factors should be considered: 1) a ship strike or entanglement may occur at some distance from the reported location; 2) the mortality or injury may involve multiple factors; for example, whales that have been both ship struck and entangled are not uncommon; 3) the actual vessel or gear type/source is often uncertain; and 4) in entanglements, several types of gear may be involved.

The serious injury determinations are susceptible to revision. There are several records where a struck and injured whale was re-sighted later, apparently healthy, or where an entangled or partially disentangled whale was re-sighted later free of gear. The reverse may also be true: a whale initially appearing in good condition after being struck or entangled is later re-sighted and found to have been seriously injured by the event. Entanglements of juvenile whales are typically considered serious injuries because the constriction on the animal is likely to become increasingly lethal as the whale grows (Cole *et al.* 2005; Nelson *et al.* 2007).

A serious injury was defined in 50 CFR part 229.2 as an injury that is likely to lead to mortality. We therefore limited the serious injury designation to only those reports that had substantiated evidence that the injury, whether from entanglement or vessel collision, was likely to lead to the whale's death (Cole *et al.* 2005; Henry *et al.* 2012). Determinations of serious injury were made on a case-by-case basis following recommendations from the workshop conducted in 1997 on differentiating serious and non-serious injuries (Angliss and DeMaster 1998). Injuries that impeded a whale's locomotion or feeding were not considered serious injuries unless they were likely to be fatal in the foreseeable future. There was no forecasting of how the entanglement or injury may increase the whale's susceptibility to further injury, namely from additional entanglements or vessel collisions. This conservative approach likely underestimates serious injury rates.

With these caveats, the total minimum detected annual average human-induced mortality and serious injury incurred by this stock (including fishery and non-fishery related causes) for the period 2006–2010 was 3.0 right whales per year (U.S. waters 2.4; Canadian waters, 0.6). As with entanglements, some injury or mortality due to ship strikes is almost certainly undetected, particularly in offshore waters. Decomposed and/or unexamined animals (e.g., carcasses reported but not retrieved or necropsied) represent lost data, some of which may relate to human impacts. For these reasons, the estimate of 3.0 right whales per year must be regarded as a minimum count (Henry *et al.* 2012).

Further, the small population size and low annual reproductive rate of right whales suggest that human sources of mortality may have a greater effect relative to population growth rates than for other whales. The principal factors believed to be retarding growth and recovery of the population are ship strikes and entanglement with fishing gear. Between 1970 and 1999, a total of 45 right whale mortalities was recorded (IWC 1999; Knowlton and Kraus 2001; Glass *et al.* 2009). Of these, 13 (28.9%) were neonates that were believed to have died from perinatal complications or other natural causes. Of the remainder, 16 (35.6%) resulted from ship strikes, 3 (6.7%) were related to entanglement in fishing gear (in two cases lobster gear, and one gillnet gear), and 13 (28.9%) were of unknown cause. At a minimum, therefore, 42.2% of the observed total for the period and 50% of the 32 non-calf deaths were attributable to human impacts (calves accounted for three deaths from ship strikes). Young animals, ages 0-4 years, are apparently the most impacted portion of the population (Kraus 1990).

Finally, entanglement or minor vessel collisions may not kill an animal directly, but may weaken or otherwise affect it so that it is more likely to become vulnerable to further injury. Such was apparently the case with the two-year-old right whale killed by a ship off Amelia Island, Florida in March 1991 after having carried gillnet gear wrapped around its tail region since the previous summer (Kenney and Kraus 1993). A similar fate befell right whale #2220, found dead on Cape Cod in 1996.

Fishery-Related Serious Injury and Mortality

Reports of mortality and serious injury relative to PBR as well as total human impacts are contained in records maintained by the New England Aquarium and the NMFS Northeast and Southeast Regional Offices (Table 2). From 2006 through 2010, 9 of 15 records of mortality or serious injury (including records from both U.S. and Canadian waters) involved entanglement or fishery interactions. For this time frame, the average reported mortality and serious injury to right whales due to fishery entanglement was 1.8 whales per year (U.S. waters, 1.6; Canadian waters, 0.2). Information from an entanglement event often does not include the detail necessary to assign the entanglements to a

particular fishery or location.

Although disentanglement is often unsuccessful or not possible for many cases, during the period 2006 through 2010, there were at least two documented cases of entanglements for which the intervention of disentanglement teams averted a likely serious-injury determination. An adult female, #2029, first sighted entangled in the Great South Channel on 9 March 2007, may have avoided serious injury due to being partially disentangled on 18 September 2007 by researchers in the Bay of Fundy, Canada. On 8 December 2008, #3294 was successfully disentangled. Sometimes, even with disentanglement, an animal may die of injuries sustained from fishing gear. A female yearling right whale, #3107 was first sighted with gear wrapping its caudal peduncle on 6 July 2002 near Briar Island, Nova Scotia. Although the gear was removed on 1 September by the New England Aquarium disentanglement team, and the animal seen alive on an aerial survey on 1 October, its carcass washed ashore at Nantucket on 12 October, 2002 with deep entanglement injuries on the caudal peduncle. Additionally, but infrequently, a whale listed as seriously injured becomes gear-free without a disentanglement effort and is seen later in reasonable health. Such was the case for whale #1980, listed as a serious injury in 2008 but seen gear-free and apparently healthy in 2011.

In January 1997, NMFS changed the classification of the Gulf of Maine and U.S. mid-Atlantic lobster pot fisheries from Category III to Category I based on examination of stranding and entanglement records of large whales from 1990 to 1994 (62 FR 33, Jan. 2, 1997).

The only bycatch of a right whale observed by the Northeast Fisheries Observer Program was in the pelagic drift gillnet fishery in 1993. No mortalities or serious injuries have been documented in any of the other fisheries monitored by NMFS.

Entanglement records from 1990 through 2010 maintained by NMFS Northeast Regional Office (NMFS, unpublished data) included 74 confirmed right whale entanglements, including right whales in weirs, gillnets, and trailing line and buoys. Because whales often free themselves of gear following an entanglement event, scarring may be a better indicator of fisheries interaction than entanglement records. In an analysis of the scarification of right whales, 338 of 447 (75.6%) whales examined during 1980–2002 were scarred at least once by fishing gear (Knowlton *et al.* 2005). Further research using the North Atlantic Right Whale Catalogue has indicated that, annually, between 14% and 51% of right whales are involved in entanglements (Knowlton *et al.* 2005). Incidents of entanglements in groundfish gillnet gear, cod traps, and herring weirs in waters of Atlantic Canada and the U.S. east coast were summarized by Read (1994). In six records of right whales that were entangled in groundfish gillnet gear in the Bay of Fundy and Gulf of Maine between 1975 and 1990, the whales were either released or escaped on their own, although several whales were observed carrying net or line fragments. A right whale mother and calf were released alive from a herring weir in the Bay of Fundy in 1976.

For all areas, specific details of right whale entanglement in fishing gear are often lacking. When direct or indirect mortality occurs, some carcasses come ashore and are subsequently examined, or are reported as "floaters" at sea. The number of unreported and unexamined carcasses is unknown, but may be significant in the case of floaters. More information is needed about fisheries interactions and where they occur.

Other Mortality

Ship strikes are a major cause of mortality and injury to right whales (Kraus 1990; Knowlton and Kraus 2001). Records from 2006 through 2010 have been summarized in Table 2. For this time frame, the average reported mortality and serious injury to right whales due to ship strikes was 1.2 whales per year (U.S. waters, 0.8; Canadian waters, 0.4).

Table 2. Confirmed human-caused mortality and serious injury records of Western North Atlantic right whales (*Eubalaena glacialis*), 2006 - 2010.

Date ^a	Report Type	Age, Sex, ID, Length	Location ^a	Assigned Cause: P=primary, S=secondary		Notes/Observations
				Ship Strike	Entanglement/ Fishery interaction	
1/10/06	mortality	Calf Male 5.4m w/out fluke	Jacksonville, FL	P		Propeller lacerations associated with hemorrhaging and edema; flukes completely severed
1/22/06	mortality	Calf Female ^b 5.6m	off Ponte Vedra Beach, FL		P	Significant premortem lesions from entanglement in apparent monofilament netting; no gear present
3/11/06	serious injury	Yearling Male #3522	Off Cumberland Island, GA	P		11 propeller lacerations across dorsal surface
7/24/06	mortality	age unknown Female 9.6m	Campobello Island, NB	P		Propeller lacerations through blubber, into muscle and ribs
8/24/06	mortality	Adult Female 14.7m	Roseway Basin, NS	P		16 fractured vertebrae; dorsal blubber bruise from head to genital region
12/30/06	mortality	Yearling Male #3508 12.6m	off Brunswick, GA	P		20 propeller lacerations along right side of head and back with associated hemorrhaging
3/31/07	mortality	Calf Male 7.7m	Outer Banks, NC		P	Edema associated with flipper and dorsal & ventral thoracic musculature; epidermal abrasion indicated entangling body and flipper wraps; no gear recovered

9/24/08 ^c	serious injury	Adult Male #2110	Jeffreys Ledge	S	P	Spinal scoliosis associated with fresh entanglement injuries; compromised pectorals; emaciated; heavy cyamid load; pale skin; healed lacerations from previously documented vessel strike injury potentially exacerbate scoliosis; no gear present
1/14/09	serious injury	Juvenile sex unknown #3311	off Brunswick, GA		P	Partial disentanglement; embedded wrap in rostrum & lip removed; decline in health; fixed trap/pot gear
1/27/09	serious injury	Juvenile Male #3710 9.8m	Cape Lookout Shoals, NC		P	Live stranded w/ spinal scoliosis; euthanized; necropsy determined scoliosis due to entanglement and not congenital; entanglement wounds chronically infected; no gear recovered
6/27/10	mortality	Adult Male	off Cape May, NJ		P	Evidence of constricting rostrum, mouth & flipper wraps w/ associated hemorrhage and bone damage; no gear recovered
7/2/10	mortality	Calf Male 7.9m	off Grand Manan Island, ME	P		2 large lacerations from dorsal to ventral surface
8/12/10	mortality	Adult Male 14.1m	Digby Neck, NS		P	Evidence of entanglement with associated hemorrhaging around right flipper; no gear present
9/10/10	serious injury	Adult Female #1503	Jeffreys Ledge		p	Constricting rostrum wrap; evidence of health decline; no gear recovered

12/25/10	serious injury	Juvenile Female #3911	off Jacksonville, FL		p	Embedded line in mouth and on flipper; severe health decline; acute cause of death was shark predation; gear analysis pending
<p>a. The date sighted and location provided in the table are not necessarily when or where the serious injury or mortality occurred; rather, this information indicates when and where the whale was first reported beached, entangled, or injured.</p> <p>b. Additional information on previous event that was not included in previous reports.</p> <p>c. Additional even not included in previous reports.</p>						

STATUS OF STOCK

The size of this stock is considered to be extremely low relative to OSP in the U.S. Atlantic EEZ, and this species is listed as endangered under the ESA. The North Atlantic right whale is considered one of the most critically endangered populations of large whales in the world (Clapham *et al.* 1999). A Recovery Plan has been published for the North Atlantic right whale and is in effect (NMFS 2005). NMFS is presently engaged in evaluating the need for critical habitat designation for the North Atlantic right whale. Under a prior listing as northern right whale, three critical habitats, Cape Cod Bay/Massachusetts Bay, Great South Channel, and the Southeastern U.S., were designated by NMFS (59 FR 28793, June 3, 1994). Two additional critical habitat areas in Canadian waters, Grand Manan Basin and Roseway Basin, were identified in Canada’s final recovery strategy for the North Atlantic right whale (Brown *et al.* 2009). A National Marine Fisheries Service ESA status review in 1996 concluded that the western North Atlantic population remains endangered. This conclusion was reinforced by the International Whaling Commission (Best *et al.* 2001), which expressed grave concern regarding the status of this stock. Relative to populations of southern right whales, there are also concerns about growth rate, percentage of reproductive females, and calving intervals in this population. The total level of human-caused mortality and serious injury is unknown, but reported human-caused mortality and serious injury was a minimum of 3.0 right whales per year from 2006 through 2010. Given that PBR has been set to 0.9, no mortality or serious injury for this stock can be considered insignificant. This is a strategic stock because the average annual human-related mortality and serious injury exceeds PBR, and also because the North Atlantic right whale is an endangered species.

REFERENCES CITED

Aguilar, A. 1986. A review of old Basque whaling and its effect on the right whales of the North Atlantic. Rep. Int. Whal. Comm. (Special Issue) 10: 191-199.

Angliss, R.P. and D.P. DeMaster 1998. Differentiating serious and non-serious injury of marine mammals taken incidental to commercial fishing operations: report of the serious injury workshop 1-2 April 1997, Silver Spring, MD. NOAA Tech. Memo. OPR-13.

Barlow, J., S.L. Swartz, T.C. Eagle and P.R. Wade 1995. U.S. marine mammal stock assessments: Guidelines for preparation, background, and a summary of the 1995 assessments. NOAA Tech. Memo. NMFS-OPR-6. 73 pp.

Baumgartner, M.F., T.V.N. Cole, R.G. Campbell, G.J. Teegarden and E.G. Durbin 2003. Associations between North Atlantic right whales and their prey, *Calanus finmarchicus*, over diel and tidal time scales. Mar. Ecol. Prog. Ser. 264: 155-166.

Baumgartner, M.F. and B.R. Mate 2003. Summertime foraging ecology of North Atlantic right whales. Mar. Ecol. Prog. Ser. 264: 123-135.

Baumgartner, M.F. and B.R. Mate 2005. Summer and fall habitat of North Atlantic right whales (*Eubalaena glacialis*) inferred from satellite telemetry. Can. J. Fish. Aq. Sci. 62: 527-543.

Best, P.B., J.L. Bannister, R.L. Brownell, Jr. and G.P. Donovan, eds. 2001. Right whales: worldwide status. J. Cetacean Res. Manage. (Special Issue) 2: 309.

Brown, M.W., D. Fenton, K. Smedbol, C. Merriman, K. Robichaud-Leblanc and J.D. Conway 2009. Recovery Strategy for the North Atlantic Right Whale (*Eubalaena glacialis*) in Atlantic Canadian Waters [Final]. Species at Risk Act Recovery Strategy Series. Fisheries and Oceans Canada, vi + 66 pp.

- Brown, M.W. and M.K. Marx 2000. Surveillance, monitoring and management of North Atlantic right whales, *Eubalaena glacialis*, in Cape Cod Bay, Massachusetts: January to Mid-May, 2000. Division of Marine Fisheries, Commonwealth of Massachusetts. final report.
- Browning, C.L., R.M. Rolland and S.D. Kraus 2010. Estimated calf and perinatal mortality in western North Atlantic right whales (*Eubalaena glacialis*). *Mar. Mamm. Sci.* 26(3):648-662.
- Caswell, H., S. Brault and M. Fujiwara 1999. Declining survival probability threatens the North Atlantic right whale. *Proc. Natl. Acad. Sci. USA* 96: 3308-3313.
- Clapham, P.J., (ed.) 2002. Report of the working group on survival estimation for North Atlantic right whales. Available from the Northeast Fisheries Science Center, 166 Water Street, Woods Hole, MA 02543.
- Clapham, P.J., S.B. Young and R.L. Brownell, Jr. 1999. Baleen whales: conservation issues and the status of the most endangered populations. *Mammal Rev.* 29: 35-60.
- Cole, T.V.N., D. Hartley and R.L. Merrick 2005. Methodologies of the NOAA National Marine Fisheries Service aerial survey program for right whales (*Eubalaena glacialis*) in the Northeast U.S., 1998-2006. *Northeast Fish. Sci. Cent. Ref. Doc.* 05-08.
- Frasier, T.R. 2005. Integrating genetic and photo-identification data to assess reproductive success in the North Atlantic right whale (*Eubalaena glacialis*). PhD thesis. McMaster University, Hamilton, Ontario.
- Frasier, T.R., B.A. McLeod, R.M. Gillett, M.W. Brown and B.N. White 2007. Right whales past and present as revealed by their genes. Pages 200-231 *in*: S.D. Kraus and R.M. Rolland, (eds.) *The urban whale: North Atlantic right whales at the crossroads*. Harvard University Press, Cambridge, MA.
- Fujiwara, M. and H. Caswell 2001. Demography of the endangered North Atlantic right whale. *Nature* 414: 537-41.
- Glass, A.H., T.V.N. Cole and M. Garron 2009. Mortality and serious injury determinations for baleen whale stocks along the United States eastern seaboard and adjacent Canadian Maritimes, 2003-2007. *Northeast Fish. Sci. Cent. Ref. Doc.* 09-04. 19 pp.
- Hain, J.H.W. 1975. The international regulation of whaling. *Marine Affairs J.* 3: 28-48.
- Hamilton, P.K., A.R. Knowlton and M.K. Marx 2007. Right whales tell their own stories: The photo-identification catalog. Pages 75-104 *in*: S.D. Kraus and R.M. Rolland, (eds.) *The urban whale: North Atlantic right whales at the crossroads*. Harvard University Press, Cambridge, MA.
- Hamilton, P.K., A.R. Knowlton, M.K. Marx and S.D. Kraus 1998. Age structure and longevity in North Atlantic right whales *Eubalaena glacialis* and their relation to reproduction. *Mar. Ecol. Prog. Ser.* 171: 285-292.
- Hamilton, P.K., R.D. Kenney and T.V.N. Cole. 2009. Right whale sightings in unusual places. *Right Whale News* 17(1): 9-10. (journal article in prep. by Mónica Almeida e Silva, Centro do IMAR da Universidade dos Açores, Departamento de Oceanografia e Pescas, Horta, Portugal)
- [Henry, A.G., T.V.N. Cole, M. Garron, L. Hall, W. Ledwell and A. Reid. 2012. Mortality and serious injury determinations for baleen whale stocks along the Gulf of Mexico, United States East Coast and Atlantic Canadian Provinces, 2006–2010, NEFSC Reference Document 12-11. 24 pp.](#) IWC [International Whaling Commission] 1999. Report of the workshop on the comprehensive assessment of right whales worldwide. *J. Cetacean Res. Manage.* 1 (supplement): 119-120.
- Jacobsen, K., M. Marx and N. Øien 2004. Two-way trans-Atlantic migration of a North Atlantic right whale (*Eubalaena glacialis*). *Mar. Mamm. Sci.* 20: 161–166.
- Kenney, R.D., M.A.M. Hyman, R.E. Owen, G.P. Scott and H.E. Winn 1986. Estimation of prey densities required by western North Atlantic right whales. *Mar. Mamm. Sci.* 2: 1-13.
- Kenney, R.D. and S.D. Kraus 1993. Right whale mortality-- a correction and an update. *Mar. Mamm. Sci.* 9: 445-446.
- Kenney, R.D., H.E. Winn and M.C. Macaulay 1995. Cetaceans in the Great South Channel, 1979-1989: right whale (*Eubalaena glacialis*). *Cont. Shelf Res.* 15: 385-414.
- Knowlton, A.R. and S.D. Kraus 2001. Mortality and serious injury of North Atlantic right whales (*Eubalaena glacialis*) in the North Atlantic Ocean. *J. Cetacean Res. Manage.* (Special Issue) 2: 193-208.
- Knowlton, A.R., S.D. Kraus and R.D. Kenney 1994. Reproduction in North Atlantic right whales (*Eubalaena glacialis*). *Can. J. Zool.* 72: 1297-1305.
- Knowlton, A.R., M.K. Marx, H.M. Pettis, P.K. Hamilton and S.D. Kraus 2005. Analysis of scarring on North Atlantic right whales (*Eubalaena glacialis*): monitoring rates of entanglement interaction 1980-2002. National Marine Fisheries Service. Contract #43EANF030107. Final Report.
- Knowlton, A.R., J. Sigurjonsson, J.N. Ciano and S.D. Kraus 1992. Long-distance movements of North Atlantic right whales (*Eubalaena glacialis*). *Mar. Mamm. Sci.* 8: 397-405.

- Kraus, S.D. 1990. Rates and potential causes of mortality in North Atlantic right whales (*Eubalaena glacialis*). *Mar. Mamm. Sci.* 6: 278-291.
- Kraus, S.D., M.W. Brown, H. Caswell, C.W. Clark, M. Fujiwara, P.K. Hamilton, R.D. Kenney, A.R. Knowlton, S. Landry, C.A. Mayo, W.A. McLellan, M.J. Moore, D.P. Nowacek, D.A. Pabst, A.J. Read and R.M. Rolland 2005. North Atlantic right whales in crisis. *Science* 309(5734): 561-562.
- Kraus, S.D., P.K. Hamilton, R.D. Kenney, A. Knowlton and C.K. Slay 2001. Reproductive parameters of the North Atlantic right whale. *J. Cetacean Res. Manage. (Special Issue)* 2: 231-236.
- Kraus, S.D., R.M. Pace and T.R. Frasier 2007. High investment, low return: the strange case of reproduction in *Eubalaena glacialis*. Pages 172- 199 in: S.D. Kraus and R.M. Rolland, (eds.) *The urban whale: North Atlantic right whales at the crossroads*. Harvard University Press, Cambridge, MA.
- Malik, S., M.W. Brown, S.D. Kraus, A. Knowlton, P. Hamilton and B.N. White 1999. Assessment of genetic structuring and habitat philopatry in the North Atlantic right whale (*Eubalaena glacialis*). *Can. J. Zool.* 77: 1217-1222.
- Malik, S., M.W. Brown, S.D. Kraus and B.N. White 2000. Analysis of mitochondrial DNA diversity within and between North and South Atlantic right whales. *Mar. Mamm. Sci.* 16: 545-558.
- Mate, B.M., S.L. Nieukirk and S.D. Kraus 1997. Satellite-monitored movements of the northern right whale. *J. Wildl. Manage.* 61: 1393-1405.
- Mayo, C.A. and M.K. Marx 1990. Surface foraging behaviour of the North Atlantic right whale, *Eubalaena glacialis*, and associated zooplankton characteristics. *Can. J. Zool.* 68: 2214-2220.
- McLellan, W.A., E. Meagher, L. Torres, G. Lovewell, C. Harper, K. Irish, B. Pike and A.D. Pabst 2004. Winter right whale sightings from aerial surveys of the coastal waters of the US mid-Atlantic. 15th Biennial Conference on the Biology of Marine Mammals.
- McLeod, B.A. and B.N. White 2010. Tracking mtDNA heteroplasmy through multiple generations in the North Atlantic right whale (*Eubalaena glacialis*). *J. Hered.* 101(2):235.
- Moore, J.C. and E. Clark 1963. Discovery of right whales in the Gulf of Mexico. *Science* 141(3577): 269.
- Nelson, M., M. Garron, R.L. Merrick, R.M. Pace and T.V.N. Cole 2007. Mortality and serious injury determinations for large whale stocks along the United States eastern seaboard and adjacent Canadian Maritimes, 2001-2005. *Northeast Fish. Sci. Cent. Ref. Doc.* 07-05. 18 pp.
- NMFS 2005. Recovery plan for the North Atlantic right whale (*Eubalaena glacialis*). National Marine Fisheries Service, Silver Spring, MD.
- Pace, R.M. and R.L. Merrick 2008. Northwest Atlantic Ocean habitats important to the conservation of North Atlantic right whales (*Eubalaena glacialis*). *Northeast Fish. Sci. Cent. Ref. Doc.* 08-07. Patrician, M.R., I.S. Biedron, H.C. Esch, F.W. Wenzel, L.A. Cooper, P.K. Hamilton, A.H. Glass, and M.F. Baumgartner. 2009. Evidence of a North Atlantic right whale calf (*Eubalaena glacialis*) born in northeastern U.S. waters. *Mar. Mamm. Sci.* 25: 462-477.
- Pendleton, D.E., A.J. Pershing, M.W. Brown, C.A. Mayo, R.D. Kenney, N.R. Record and T.V.N. Cole. 2009. Regional-scale mean copepod concentration indicates relative abundance of North Atlantic right whales. *Mar. Ecol. Prog. Ser.* 378: 211-225.
- Rastogi, T., M.W. Brown, B.A. McLeod, T.R. Frasier, R. Grenier, S.L. Cumbaa, J. Nadarajah and B.N. White 2004. Genetic analysis of 16th-century whale bones prompts a revision of the impact of Basque whaling on right and bowhead whales in the western North Atlantic. *Can. J. Zool.* 82: 1647-1654.
- Read, A.J. 1994. Interactions between cetaceans and gillnet and trap fisheries in the northwest Atlantic. Gillnets and cetaceans. *Rep. Int. Whal. Comm. (Special Issue)* 15: 133-147.
- Reeves, R.R., J.M. Breiwick and E. Mitchell 1992. Pre-exploitation abundance of right whales off the eastern United States. Pages 5-7 in: J. Hain, (ed.) *The right whale in the western North Atlantic: A science and management workshop*, 14-15 April 1992, Silver Spring, Maryland. *Northeast Fish. Sci. Cent. Ref. Doc.* 92-05.
- Reeves, R.R., R. Rolland and P. Clapham, (eds.) 2001. Report of the workshop on the causes of reproductive failure in North Atlantic right whales: new avenues of research. *Northeast Fish. Sci. Cent. Ref. Doc.* 01-16.
- Reeves, R.R., T. Smith and E. Josephson 2007. Near-annihilation of a species: Right whaling in the North Atlantic. Pages in: S.D. Kraus and R. M. Rolland, (eds.) *The urban whale: North Atlantic right whales at the crossroads*. Harvard University Press, Cambridge, MA.
- Rosenbaum, H.C., M.S. Egan, P.J. Clapham, R.L. Brownell, Jr. and R. DeSalle 1997. An effective method for isolating DNA from non-conventional museum specimens. *Mol. Ecol.* 6: 677-681.

- Rosenbaum, H.C., M.S. Egan, P.J. Clapham, R.L. Brownell, Jr., S. Malik, M.W. Brown, B.N. White, P. Walsh and R. DeSalle 2000. Utility of North Atlantic right whale museum specimens for assessing changes in genetic diversity. *Cons. Biol.* 14: 1837-1842.
- Schaeff, C.M., S.D. Kraus, M.W. Brown, J. Perkins, R. Payne and B.N. White 1997. Comparison of genetic variability of North and South Atlantic right whales (*Eubalaena*) using DNA fingerprinting. *Can. J. Zool.* 75: 1073-1080.
- Schmidly, D.J., C.O. Martin and G.F. Collins 1972. First occurrence of a black right whale (*Balaena glacialis*) along the Texas coast. *Southw. Nat.* 17: 214-215.
- Wade, P.R. and R.P. Angliss 1997. Guidelines for assessing marine mammal stocks: Report of the GAMMS Workshop April 3-5, 1996, Seattle, Washington. NOAA Tech. Memo. NMFS-OPR-12. 93 pp.
- Waldick, R.C., S.D. Kraus, M. Brown and B.N. White 2002. Evaluating the effects of historic bottleneck events: An assessment of microsatellite variability in the endangered, North Atlantic right whale. *Mol. Ecol.* 11(11): 2241-2250.