

## A2. CAPE COD – GULF OF MAINE YELLOWTAIL FLOUNDER

### INTRODUCTION

Yellowtail flounder, *Limanda ferruginea*, inhabit the continental shelf of the northwest Atlantic from Labrador to Chesapeake Bay (Bigelow and Schroeder 1953, Collette and Klein-MacPhee 2002). Off the U.S. coast, commercially important concentrations are found on Georges Bank, off southern New England, and off Cape Cod (statistical areas 514 and 521; Figure A2.1). Cape Cod yellowtail inhabit shallow water (10-60 m) relative to offshore yellowtail stocks (Lux 1964). Spawning occurs during spring and summer, peaking in late May. Larvae are pelagic for a month or more, then develop demersal form and settle to the bottom. Yellowtail flounder on the Cape Cod grounds generally mature at age-3 (O'Brien et al. 1993) and grow to 58 cm total length.

A New England fishery for yellowtail flounder developed in the 1930s, coincident with a decline in winter flounder abundance, and the fishery expanded from southern New England to Georges bank and the Cape Cod grounds in the late 1930s and early 1940s (Royce et al. 1959, Lux 1964). On the Cape Cod grounds, yellowtail are generally caught in multi-species groundfish fisheries (principally by otter trawls) from late fall to spring, with some landings by gillnets in the winter and spring, but may also be specifically targeted in certain seasons (Royce et al. 1959).

Historically, landings from the Cape Cod grounds were a small portion of the total U.S. yellowtail landings. However, during the collapse of Georges Bank and southern New England stocks in the early 1990s (NEFSC 1994), the Cape Cod stock was the most productive of the U.S. yellowtail stocks (Overholtz and Cadrin 1998).

The available information on yellowtail flounder stock structure off the northeast U.S. indicates separate stocks on Georges Bank, off Cape Cod, and from southern New England to the Mid-Atlantic Bight. Distributional analyses indicate a relatively continuous distribution from the Mid Atlantic Bight to Nantucket Shoals, a concentration on Georges Bank, and a relatively separate concentration off Cape Cod (Royce et al. 1959). Geographic variation indicates that yellowtail off Cape Cod comprise a separate phenotypic stock than resources to the south (Begg et al. 1999). Tagging data indicate low dispersion from Cape Cod, Georges Bank and southern New England fishing grounds (Royce et al. 1959, Lux 1963). Descriptive information on early life history stages and circulation patterns suggest that yellowtail spawn in hydrographic retention areas, but there may be some advection of eggs and larvae from Georges Bank and Cape Cod to southern New England and the Mid Atlantic Bight (Sinclair 1988). In summary, yellowtail on the Cape Cod grounds can be considered a separate phenotypic stock (with some question on the northern boundary of the stock area). There is little evidence supporting separate stocks on the Cape Cod grounds and in the northern Gulf of Maine.

### Management History

Over the past 25 years, the fishery for yellowtail flounder in federal waters has been managed under several regimes. From 1971 to 1976, national quotas were allocated by the International Commission for Northwest Atlantic Fisheries. From 1977 to 1982, the New England Fishery Management Council Atlantic Groundfish Fishery Management Plan established optimum yield thresholds for yellowtail west of 69° longitude (which included Cape Cod and southern New England yellowtail stocks) and imposed minimum mesh size, spawning closures, and trip limits (Table A2.1). In 1982, the Council adopted an Interim Groundfish Plan, which established a minimum size limit of 28 cm (11 in) and a minimum mesh size of 130 mm (5 1/8"; with exemptions). In 1983, the minimum mesh size was increased to 140 mm (5.5"; with exemptions). In 1986, the Council's Multispecies Fishery Management Plan increased the minimum legal size to 30 cm (12 in) and imposed seasonal area closures. Amendment #4 to the Plan further increased the minimum legal size to 33 cm (13 in) in 1989. In 1993, finfish exclusion devices were required in the northern shrimp fishery to reduce groundfish bycatch. Amendments #5, #6, and #7 (1994-1996), limited days at sea, closed areas year-round, further increased minimum mesh size to 142 mm (6 in diamond or square; with fewer exemptions), imposed trip limits for groundfish bycatch in the sea scallop fishery, and prohibited small-mesh fisheries from landing groundfish. Framework #25 was an annual adjustment to the Multispecies Plan which prohibited bottom trawling in two areas of yellowtail habitat on the Cape Cod grounds in 1998: Massachusetts Bay was closed in March, and the waters off Cape Ann were closed in April. Other sections of the western Gulf of Maine were closed in May and June. The 'western Gulf of Maine closure' is too deep to protect yellowtail flounder. Amendment #9 was adopted in 1998 to revise the overfishing definition according to Sustainable Fisheries Act requirements. In 1999, minimum twine top mesh of scallop dredges was increased from 203mm to 254mm to reduce yellowtail bycatch.

The portion of the Cape Cod yellowtail stock found within the Massachusetts territorial sea is managed by the Massachusetts Division of Marine Fisheries under a suite of management measures. Since 1931, many coastal areas have been closed to bottom trawling year-round (e.g. Winthrop Head to Gloucester), or seasonally (e.g. Boston to Provincetown and Gloucester to New Hampshire). The state has had a succession of more stringent size limits beginning with a 11" minimum size in 1982. The size limit increased to 12" in 1986 and then to 13" in 1988. In 1986, 5" mesh codends were required for trawling within the 20 fathom contour in waters north of Cape Cod. In 1986, a winter flounder spawning closure to trawling and gillnetting extending approximately one to two miles from shore was established in waters from the New Hampshire border to Provincetown from February 1 to April 30 (extended to May 31 in 1990). In 1989, small mesh trawling was restricted to permitted fisheries targeting specific species. In 1991, minimum mesh size throughout the net was increased to 5 1/2" north and east of Cape Cod. Since November 1, 1992 a year-round night closure to mobile gear has abbreviated fishing effort by curtailing "trip fishing". Beginning in 1993, a Coastal Access Permit was required to fish mobile gear. The mesh size was increased again in 1994 to 6". A moratorium on new applicants for this permit was enacted in 1994 stemming an increase in effort into state waters. In 1995, the size limit for vessels fishing mobile gear was

reduced from 90' registered length to 72' length over all. From 1995-1999, small mesh trawling in state waters north of Cape Cod was limited to an experimental whiting fishery with drastic ground gear modifications for bycatch reduction, prohibitions on groundfish retention and intensive sea sampling. Scallop dredge fisheries have been limited to 10' combined maximum dredge width since 1990. Gillnet fisheries in Massachusetts have a permit moratorium, 2400' maximum net length, 6" minimum mesh size and seasonally closed areas.

### Assessment History

Yellowtail resources on the Cape Cod fishing grounds and in the northern Gulf of Maine have been assessed and managed separately. The Cape Cod yellowtail resource was initially assessed by descriptive summaries of catch, effort, catch samples, survey indices, yield per recruit modeling, and estimates of total mortality rate ( $Z$ ) from survey and commercial age samples. The stock was more stable than the Georges Bank or southern New England stocks from the 1940s to the 1960s, based on patterns of landings and commercial catch rates (Royce et al. 1959, Lux 1964). However in the early 1970s, effort began to increase, and catch rates began to decline (Parrack 1974). Estimates of fishing mortality rate ( $F$ ) during the 1970s were at or above the estimated level of maximum yield per recruit (Howe 1975). Although yield remained stable relative to offshore stocks, catch rates were at the lowest levels observed by the late 1970s (Sissenwine et al. 1978). For a brief period in the mid 1970s, the stock appeared to be stable (McBride and Sissenwine 1979). However, by the late 1970s, peak catches produced high mortality rates, the age structure appeared to be truncated, and catch rates continued to decrease (McBride et al. 1980, McBride and Sissenwine 1980, Clark et al. 1981). Despite some indications of good recruitment in early 1980s (McBride and Clark 1983, Clark et al. 1984), landings and relative abundance generally decreased in the 1980s (NEFC 1986). The 1987 year class was dominant and contributed to some rebuilding, however, the most recent descriptive assessment of Cape Cod yellowtail concluded that the stock was overexploited (Rago 1994). An age-based assessment indicated that  $F$  was high ( $>0.7$ ) from 1985 to 1997 and biomass was much less than  $B_{MSY}$  (Cadrin et al. 1999). Updated assessments in 1999 and 2000 each indicated a reduction in  $F$  in the last year of the assessment (Cadrin and King 2000, Cadrin 2001), but the revised estimate of 1998  $F$  remained high (1.0, Cadrin 2001). An updated assessment of the Cape Cod yellowtail flounder stock was prepared concurrently with this assessment for the Groundfish Assessment Review Meeting (Cadrin and King 2002).

Yellowtail flounder in the northern Gulf of Maine have not been analytically assessed. Royce et al. (1959) compiled yellowtail landings statistics for the scattered shoals in the northern Gulf of Maine in the 1940s, and Lux (1964) updated landings statistics through 1961. McBride and Sissenwine (1980) reported a substantial increase in yellowtail flounder landings from the northern Gulf of Maine during the 1970s, and described the sparse survey information available for yellowtail in the northern Gulf of Maine. This assessment combines catch and survey information from the Cape Cod grounds and the northern Gulf of Maine for a single-stock analysis.

## FISHERY DATA

### Commercial Landings

Commercial statistics for Cape Cod yellowtail flounder are from statistical areas 514 and 521, and northern Gulf of Maine yellowtail are from statistical areas 511, 512, 513 and 515 (Figure A2.1). U.S. commercial landings of yellowtail flounder were derived from dealer weighout reports and canvas data according to historical assessment reports (Royce et al. 1959, Lux 1964, Sissenwine et al. 1978, McBride et al. 1980, McBride and Clark 1983, NEFC 1986). Previous to 1994, landings were allocated to statistical area, month, and gear type according to interview data collected by port agents (Burns et al. 1983). For 1994, landings reported by dealers were allocated to stock area using fishing vessel logbook data, by fishing gear, port, and season (Wigley, et al. 1998). For 1995-1997, dealers' reported landings were prorated to stock area using a modified proration that included dealer codes (NEFSC 1998).

Annual landings generally increased from less than 1,000mt in the mid 1930s to a peak of 5,600mt in 1980 (Table A2.2, Figure A2.2). Landings decreased to approximately 1,200mt per year in the late 1980s, but peaked again in 1990 at 3,200mt with recruitment of the strong 1987 yearclass. Landings decreased to 800mt in 1993 and remained low through the 1990s, but rapidly increased to greater than 2,400mt in 2000 and 2001.

Landings at age of Cape Cod yellowtail flounder are described in Cadrin et al. (1999), Cadrin and King (2000, 2002) and Cadrin (2001), and sample sizes are reported in Table A2.3. Very few port samples are available for the northern Gulf of Maine yellowtail fishery (six samples from 1969, 1976, 1983, 1987, 1988 and 1991), and all market categories were not sampled in any year. Therefore, the age distribution of Cape Cod yellowtail landings, by half and market category, were assumed for northern Gulf of Maine landings. Landings at age, by region, are listed in Table A2.4.

### Discarded Catch

Discards were estimated using discard to kept observations from 1989-2001 sea sampling for the trawl and gillnet fisheries and discard per effort for the shrimp and scallop fisheries as described in Cadrin et al. (1999). Discards at age of Cape Cod yellowtail flounder for 1985-1997 are described in Cadrin et al. (1999), and for 1998-2001 by Cadrin and King 2002 (Table A2.5a). Discards for the northern Gulf of Maine averaged 38% of Gulf of Maine yellowtail landings, primarily from the trawl fishery and the shrimp fishery prior to the Nordmore grate requirement in 1993 (Table A2.5b). Discards for 1985-1988 were approximated by assuming a 38% annual discard ratio.

Discards at age of Cape Cod yellowtail flounder are described in Cadrin et al. (1999) and Cadrin and King (2002; Table A2.6a). Discards at age for yellowtail in the northern Gulf of Maine were estimated using length observations from sea sampling (Table A2.6b; using pooled-year samples by half and gear for unsampled discards) and survey age-length keys for 1989-2001, by half-year. The proportion discard at age from the Cape Cod grounds were assumed for 1985-1988 discards in the northern Gulf of Maine. Total catch at age is dominated by age-3 and indicates a strong 1987 yearclass (Appendix A,

Figure A2.3). Mean weight at age of catch was relatively stable from 1985 to 1996, but has increased for ages 2+ in recent years (Figure A2.4).

## **ABUNDANCE AND BIOMASS INDICES**

### Stock Abundance and Biomass Indices

NEFSC survey strata for the Cape Cod grounds are offshore strata 25-27 and inshore strata 56-66 and strata for the northern Gulf of Maine are offshore strata 39 and 40 (Figure A2.5). The NEFSC spring and autumn bottom trawl surveys have sampled offshore strata since 1963 and 1968, respectively (Despres et al. 1988). However, sampling of inshore strata north of Cape Cod began in 1977. Yellowtail are consistently sampled in offshore stratum 27 by the spring survey, but were only caught in 4 years since 1963 by the fall survey. Therefore, the spring index includes offshore stratum 27, but the fall survey does not.

Survey biomass indices are somewhat noisy, but generally indicate high biomass in the late 1970s and early 1980s, a decline in the 1980s and a rapid increase in the late 1990s (Figure A2.6). The rapid increases in fall 1999 or spring 2000 do not appear to result from strong recruitment, because catches of all ages increased. Large survey catches were distributed throughout Cape Cod and Massachusetts Bays, Stellwagen Bank and Jeffreys Ledge (Figure A2.7).

The portion of survey biomass from northern Gulf of Maine is variable, but averages 11% throughout the survey time series (Figure A2.8). There appears to have been low abundance of yellowtail in the northern Gulf of Maine during the late 1960s, early 1970s, and middle 1980s. Age distribution of survey catches are potted in Figure A2.9 and listed in Table A2.8.

Correspondence among survey indices was assessed using correlations among normalized observations [ $\ln(x/\text{mean})$ ; Table A2.7]. Correlations among survey series were weak to moderate with strongest correlations among indices for ages 2-4 ( $r=0.12$  to  $0.69$ ). Normalized indices of catch per tow at age are illustrated in Figure A2.10.

## **MORTALITY AND STOCK SIZE**

### Virtual Population Analysis

Estimates of abundance from virtual population analysis of catch at age-1 to age-5+, 1985-2001, were calibrated using an ADAPT algorithm (Gavaris 1988) that estimated age 2-4 survivors in 2002 and survey catchability coefficients ( $q$ ) using nonlinear least squares of survey observation errors. Abundance at age was calibrated with survey indices of abundance: spring and winter survey indices (age-1 to age-5+) were calibrated to January abundance, and fall survey indices (age-1 to age-4+) were calibrated to abundance for January of the next year. The instantaneous rate of natural mortality ( $M$ ) was assumed to be 0.2 based on tag returns (Lux 1969), relationships of  $Z$  to effort

(Brown and Hennemuth 1971), and the oldest individual sampled in the stock area (age-14). Although catches of yellowtail older than age-8 are rare in commercial or research catches, the stock has been heavily exploited for seven decades. Maturity at age for Cape Cod yellowtail flounder was reported by O'Brien et al. (1993) from 1985-1990 NEFSC spring survey samples. Model Residuals are plotted in Figure A2.11.

Results indicate that  $F$  on ages 3+ decreased from a peak of 1.3 in 1988 to 0.28 in 1993, then increased to an annual average of 0.61 from 1995 to 2000 and was 0.75 in 2001 (Table A2.9, Figure A2.12). With the exception of the strong 1987 year class (29 million at age-1), recruitment has been stable, averaging 10 million at age 1. However, early indications are that the 2000 yearclass is well below average. Spawning biomass averaged 1,000mt during the late 1980s increased to a peak of 3,800mt in 1991 as the 1987 cohort matured, decreased to 1,600mt in 1998, and gradually increased to 3,200 mt in 2001. Retrospective analysis indicates a pattern of underestimating  $F$ , and overestimating SSB in the last five years (Figure A2.13).

Bootstrap analysis indicates that abundance estimates in 2002 were estimated with moderate precision (CVs=0.26-0.51). The 80% confidence limit for 2001  $F$  is 0.59-0.95, and the 80% confidence limit for 2001 SSB is 2,500-4,000mt.

#### Biological Reference Points

Yield and biomass per recruit were calculated assuming the observed partial recruitment and mean weight at age for 1994-2001 (Thompson and Bell 1934). Results are reported in Table A2.10 and shown in Figure A2.14. A comparison of recently observed age distributions with the age distribution expected at  $F_{40\%}$  shows a relative truncation in current age structure (Figure A2.15). Applying the approach used to estimate MSY proxies for Cape Cod yellowtail (NEFSC 2002),  $F_{MSY}$  is approximated as  $F_{40\%MSP}$  (0.17). The  $SSB_{MSY}$  proxy is 12,600mt, calculated as the product of 40%MSP (1.192kg spawning biomass) and average recruitment (10.5 million). The MSY proxy is 2,300mt, derived as the product of yield per recruit at  $F_{40\%MSP}$  (0.213kg) and average recruitment.

#### Projections

Stochastic projections at 85% of status quo  $F$  in 2002 and  $F=0.03$  for 2003-2009 there is a 50% probability of rebuilding to  $SSB_{MSY}$  by 2009 (Appendix A, Figure A2.16).

However, retrospective patterns indicate that projections may be optimistic.

## **WORKING GROUP DISCUSSION**

#### Stock Structure

The WG reviewed seven working papers/presentations on yellowtail stock structure. With respect to spatiotemporal patterns of abundance, the WG noted that recruitment trends of Cape Cod and southern New England yellowtail indicated possible autocorrelation, as evidenced by a common series of several years of poor recruitment that might be indicative of a common stock. The WG noted that historical tagging data

indicate weak movement between the Cape Cod, Georges Bank, and other areas, but strong mixing between Mid Atlantic and southern New England areas, that might be indicative of a common Mid Atlantic-southern New England stock. The WG noted limited evidence in the literature to separate Gulf of Maine fish from the Cape Cod stock. The WG supported the major conclusion of working paper A1 that information available from the literature indicates separate yellowtail flounder stocks on Georges Bank, off Cape Cod, and in the Southern New England-Mid Atlantic Bight area.

The Working Group reviewed the evidence available in the scientific literature for different assumptions about yellowtail flounder stock structure based on 1) geographic distribution of the fish and fishing patterns, 2) geographic variation of genetics, life history patterns, recruitment, and morphology, 3) movements and migration of ichthyoplankton and juvenile/adult fish, and 4) previous multi-approach assessments which considered many of these factors in developing stock structure assumptions for assessment. Geographic analyses indicate a relatively continuous distribution of yellowtail flounder from the Mid Atlantic Bight to Nantucket Shoals, a concentration on Georges Bank, and a relatively separate concentration off Cape Cod. Geographic variation in life history parameters indicates that yellowtail off Cape Cod comprise a separate phenotypic stock than resources to the south. Historical tagging data indicate less than 3% dispersion from Cape Cod, Georges Bank and southern New England fishing grounds. Descriptive information on early life history stages and circulation patterns suggest that yellowtail spawn in hydrographic retention areas, but that there may be some advection of eggs and larvae from Georges Bank and Cape Cod to Southern New England and the Mid Atlantic Bight.

The Working Group reviewed spatiotemporal patterns in the abundance of yellowtail for evidence of stock structure. The overwhelming pattern indicated by cluster analysis was a difference between northern and southern survey strata, with southern strata having peaks of abundance in the early and late 1980s and northern strata having a general increase abundance increasing in northern strata during the 1990s and having no trend in southern strata. The boundary between the two major clusters is between southwestern Georges Bank and Nantucket Shoals, particularly the southwestern part, where survey catches reflect both southern and northern peaks in abundance. The WG noted that the GIS and multivariate analyses did not provide strong evidence for separation of the CC and GOM stocks. The WG supported the major conclusions that 1) there are two major groups of NEFSC survey strata based on patterns of abundance over time, with a boundary on southwestern GB (northern: GOM, CC, and GB areas; southern: MA and SNE areas), and 2) the current analyses confirm earlier conclusions of separate harvest stocks on GB and off SNE. Correlation analysis of survey data generally confirmed the multivariate analysis by stratum. Survey indices and landings were strongly correlated between southern New England and the mid-Atlantic, not correlated between southern New England and Cape Cod or southern New England and Georges bank, and moderately correlated between Georges Bank and Cape Cod.

The Working Group reviewed geographic variation in growth and maturity of yellowtail as the basis for stock structure assumptions, using spatial and multivariate statistical

analyses. A nineteen-year time series of NEFSC survey observations was analyzed to investigate patterns of variation in nine life history variables (male mean length at ages 2-4, female mean length at ages 2-4, male maturity at age-2, and female maturity at ages 2 and 3) among survey strata. Life history characters are strongly correlated and vary significantly among stock areas as well as 5-year time periods. The major pattern of variance was faster growth and maturation in southern stocks (GB, SNE, and MA) and slower growth and maturation in northern stocks (Scotian Shelf and CC). Life history characters are generally homogeneous within the southern areas and within the northern areas, with some intermediate observations in the CC area. One survey stratum east of Cape Cod was identified that had life history observations that were consistently more similar to observations in SNE than to other observations in the Cape Cod area. The WG supported the major conclusion that geographic patterns of variation in size at age and proportion mature at age indicate two phenotypic stocks of yellowtail flounder off the northeastern United States, with a boundary east of Cape Cod.

The Working Group reviewed information on morphometric (fish body measurement) variation of yellowtail flounder as the basis for stock structure assumptions, using image analysis and multivariate statistical analysis. Significant morphometric variation was found between sexes of yellowtail flounder and among eight geographic areas, from the Grand Bank to the Mid-Atlantic Bight. Yellowtail sampled off Newfoundland had relatively shorter bodies than those from south of Nova Scotia. Extrinsic classification accuracy of males and females to the correct Canadian area was 71-95%, but was lower for areas off the northeastern United States (43-76%). Females had relatively deeper abdomens and larger heads than males.

The WG noted that previous investigators (e.g., Lux 1963) found no significant differences in meristics (e.g., fin and ray counts) among U.S. stocks, supporting the current morphometric work. The WG also noted that the results of the morphometric work coincides with the differences in growth noted between U.S. and Newfoundland stocks. The WG supported the conclusion that morphometric variation among U.S. yellowtail flounder groups is not sufficient for accurate classification to stock area.

The Working Group reviewed an exploratory analysis of patterns of yellowtail larval drift for evidence of stock structure. Changes in the geographic distribution of yellowtail flounder eggs and larvae over the course of the spawning season suggest broad-scale larval drift. Evidence of similar distributional changes from the location of the spawners to that of the eggs, however, is confounded by limitations in survey timing. The WG supported the conclusion of working paper A4 that qualitative spatial analyses indicate a general southwesterly movement of yellowtail flounder larvae along the continental shelf of the northeastern United States.

The Working Group reviewed genetic analyses that attempted to find evidence for yellowtail flounder stock structure. The objective of this work is to define stocks based on genetic markers, using methods (RAPD-PCR) which can resolve DNA fingerprints from the sampled muscle tissue of individual fish. Frequency patterns of DNA banding are obtained which are examined for differences between fish from the MA,



SNE, GB, CC, and GOM stocks. Results for two DNA primers, which provided 28 characteristic bands, provided no evidence of extensive population structure for yellowtail flounder sampled from the MA to GOM areas. Future work will attempt to use other methods, such as the examination of nuclear and/or mitochondrial DNA, to look for differences among groups of yellowtail flounder.

The WG noted that the number of migrants per generation between the yellowtail stock areas, although probably low, is likely sufficient to prevent detection of significant genetic differences using RAPD-PCR. The WG noted that the expression of phenotypic differences may not be evident in the genome, or may be very difficult to detect (many different primers may have to be tested to find one that isolates the gene responsible for a given phenotypic expression). The WG supported the conclusion of presentation A6 that, at this time, yellowtail flounder stock differentiation must be based on factors other than genetics.

The current work reviewed by the WG indicates no genetic difference among yellowtail flounder on U.S. fishing grounds. Patterns over time in landings and survey indices suggest two harvest stocks with a boundary between Georges Bank and Southern New England. Differences in life history characteristics suggest two phenotypic stocks with a boundary off Cape Cod. The WG noted that the most important potential misalignments with respect to current or proposed stock definitions are in areas 521, 525, and 526 (and associated NEFSC survey strata 10, 13 and 25), where fish from adjacent stocks may overlap during times of abundance. However, the WG found no strong evidence in patterns of fishery landings, survey abundance indices, or life history parameters to suggest that revision of the current assignment to stock areas of these particular statistical areas or survey strata is appropriate. Further, the WG did not find significant justification for the inclusion of fish caught in area 4 (i.e., Canadian landings) to the CC-GOM stock. The WG concluded that current evidence indicates that three stock areas are appropriate for yellowtail flounder: 1) a GB stock including fish landed from NEFSC statistical areas 522, 525, 551-552, and 561-562, and associated NEFSC survey strata (i.e., the current stock definition used in U.S. and Canadian assessments), 2) a SNE-MA stock including fish landed from areas 526, 533-539, 541, and 611-639, and associated NEFSC survey strata, and 3) a CC-GOM stock including fish landed from areas 511-521, and associated NEFSC survey strata. Finally, the WG recommends that assessment scientists explore the potential to classify yellowtail in fishery and survey samples to stock in the overlap/transition areas based on age structure characteristics.

### Stock Assessment

The Working group discussed the sharp increase in catch and survey indices from 1999 to 2001. The Group speculated that rolling closures may have increased both survey and fishery catchability. Surrounding closures may have redirected effort onto Stellwagen Bank. The Group noted that sharp increases also occurred in historic landings (Figure A2.2).

The Working Group noted that sampling improved since last assessment, with samples in each market category and season. The mean weight at ages 3-5 increased in the catch.

The Group considered the possibility that mean weights were poorly estimated in early part of time series when sampling coverage was poor. Therefore, the Group agreed that as many years as possible should be included to derive the mean weights and partial recruitment at age for reference point estimation and projections.

The Working group agreed to revise the calibration configuration from previous assessments by including all age 5 and 6+ indices. The change was made to reduce the substantial positive bias in the age-5 abundance estimate when those indices were excluded.

The Working Group was concerned that projections may not be reliable because of retrospective error. They noted that retrospective inconsistencies are worst for older ages, but could not determine if the source of the errors was in the catch data or assumptions such as M or F on the oldest age. Although estimates from the assessment are imprecise and perhaps biased, the Group concluded that F is high. The truncated age structure in the surveys and catch confirm that mortality is high.

Despite the high F, stock size appears to be increasing. However, the same impression was given by recent assessments, only to have stock size estimates decrease when the assessments were updated. The Group noted that the problems in the assessment may result from the relatively short time series of catch at age and little contrast in the data.

The Group investigated the possibility that older fish are moving from the fishing and survey areas, giving the false impression of high mortality. Size distributions from the longest time series of survey data (fall survey, offshore strata 25, 26, 39 and 40; Figure A2.17) show that larger fish were sampled in the assessment strata in the 1960s, but recent length distributions are considerably smaller. More large fish were also sampled in the earliest years of the Massachusetts survey (Figure A2.18). The Gulf of Maine summer survey, which sampled the inshore strata of the western Gulf of Maine (1977-1981, inshore strata 68-90; Figure A2.19) caught a similar size distribution of yellowtail as the assessment strata. Survey catches in the central and eastern Gulf of Maine also caught a similar size distribution of yellowtail as the assessment strata (Figure A2.20), but inconsistently and at much lower densities than those in the assessment strata (e.g., since 1963, yellowtail were only caught twice in stratum 28, six surveys in stratum 29, six surveys in stratum 37 and once in stratum 38). Therefore, the assessment strata appear to reflect the size distribution throughout the Gulf of Maine, and no large yellowtail were sampled anywhere in the Gulf of Maine in recent years.

## **SARC DISCUSSION**

The original ADAPT run used age 1-6+ catch at age formulation and exhibited a severe retrospective pattern for SSB and F. A comparison of ADAPT retrospective patterns from Cape Cod-Gulf of Maine and Cape Cod only exhibited little difference. The low numbers of age 5 in the catch and surveys did not appear to be sufficient to reliably estimate F on age 5. The GARM noted that the high F seems inconsistent with level or increasing SSB and increasing survey indices. A lot of discussion centered on how this could be possible,

without a consensus regarding cause. It was suggested that the high  $F$  means that the tuning is actually only working on the oldest age group. Similarly, the estimated catchabilities increase without reaching an asymptote with increasing age. Also, the SARC observed that  $F_{(4-5)}$  may not be a good estimator of  $F$  on the population since a large portion of the catch is age-3

As a result, an alternate ADAPT run which truncated the catch at age to age-5<sup>+</sup> was considered. Estimation of abundance for the truncated catch at age required that age 3 be considered fully recruited for calculation of  $F$  on the oldest true age. The alternate Adapt run reduced the magnitude of the retrospective patterns for fully recruited  $F$  and spawning biomass. The results revealed a high sensitivity to the calibration change. The fully recruited  $F$  decreased while spawning stock biomass increased.

Including a flat-topped selectivity pattern at age 3+ could mask high  $F$ 's at true fully recruited ages. The original formulation, which estimated  $F$  on age 3, suggested that age 3 yellowtail were partially recruited. A comparison of observed length distribution at age-3 and length selectivity at various mesh sizes indicated only partial retention of age-3 yellowtail. However, mesh selectivity is only one component of fishery selectivity and other factors, such as temporal-spatial elements of the fishery, also influence fishery selectivity. In addition, the mean weights of a plus group at age-5 and older may be difficult to characterize because they continue to grow substantially after age 5.

Age determination does not seem to be a problem with this stock, especially for the young ages in the catch. However, the sampling of catch could be causing a problem, particularly in the Gulf of Maine. The lack of contrast in the VPA time series may lead to imprecise estimate of survey catchability. The time series begins in 1985 due to few commercial samples prior to 1985.

The possibility of contributions from the Georges Bank and/or Southern New England stocks of yellowtail flounder to the Cape Cod-Gulf of Maine stock was discussed in terms of both adult movement and recruitment impacts. Given the relative sizes of the stocks, especially the Georges Bank and Cape Cod stocks, any transfer among stocks could overwhelm the signal from Cape Cod.

The revised ADAPT formulation, which uses average fully recruited  $F$  on ages 3 and 4 required re-estimating yield per recruit and biological reference points. Several concerns about including the partially recruited age 3 in the average of fully recruited  $F$  were raised. However, the YPR and biological reference points were re-estimated using age 3 as fully recruited in order to be consistent with the revised Adapt configuration.

An examination of stock-recruit observations for Cape Cod-Gulf of Maine yellowtail and fishing mortality rates at various levels of replacement suggests that the stock can replace itself at  $F$  greater than  $F_{40\%}$  (i.e.  $F_{med} > F_{40\% MSP}$ ) and  $F_{40\%}$  may be a conservative proxy for  $F_{MSY}$ . However, extrapolating recruitment at high stock sizes from the VPA time series may overestimate productivity of the stock at higher SSB. The stock recruitment relationship is similar to the Georges Bank stock prior to recovery, in that most stock

recruitment points were above the  $F_{40\%}$  replacement line. This suggests that a short-term perspective of the stock recruitment relationship may not represent the potential productivity of the Cape Cod-Gulf of Maine stock. The SARC concluded that there is currently no justification for changing the  $F_{40\%}$  reference point.

#### Sources of Uncertainty

- Very few length samples were available from the relatively small Gulf of Maine catch.
- There was an apparent increase in survey availability in Fall 1999 and Spring 2000 surveys. These recent observations have a large influence on the ADAPT calibration.
- Relative yearclass strengths are not tracked well over time by the surveys, indicating that survey availability has been variable throughout the time series.
- Spawning stock biomass calculations are based on a constant maturity at age assumption. Changes in maturity at age have not been investigated.
- The degree of mixing between Cape Cod-Gulf of Maine yellowtail and adjacent stocks is not precisely known. Substantial mixing may confound population estimates.
- Estimation of the very small 2000 year class may change in future assessments. Previous estimates of recruitment in the most recent year have changed substantially as assessments were updated.
- Lack of contrast in the recruitment time series limits the perception of  $SSB_{MSY}$ .

#### Research Recommendations

- Tagging studies should be planned to examine movements and to independently estimate  $F$ . Early tagging studies may have been conducted during different temperature regimes.
- Commercial length and age samples from the Gulf of Maine region are needed.
- The use of parametric models to estimate  $MSY$  based reference points should be explored.
- Consider using a forward-projection statistical catch at age model.
- Incorporate the State of Maine inshore survey data in the assessment.
- Alternative indices of abundance should be explored, such as industry surveys, study fleets, and a flatfish survey.
- Increase observer sampling on the exempted whiting fishery, particularly to confirm low bycatch observations for the recently required raised footrope.
- Sample inshore NEFSC survey strata more consistently.
- Continue investigation of geographic patterns in sex ratios and maturity at age. Evaluate possible revisions of survey sampling and data processing protocol to obtain abundance indices by sex.
- Evaluate information on dimorphic growth rates.
- Explore stock identification techniques for additional information on stock boundaries and rates of movement among stock areas.
- Unique gear codes for small-mesh fisheries (similar to  $negear=058$  or  $gearcode='OTS'$  for shrimp trawls) would greatly benefit estimation of discards.

- Continue processing archived age samples from MADMF surveys to eliminate using NEFSC age keys as noted and process NEFSC observer age samples.
- Revise historical small-mesh discard estimates so that the shrimp and whiting fisheries are treated separately.
- Investigate information available on discard mortality of yellowtail flounder.
- Explore post-stratification of survey data in NEFSC stratum 24 and inshore strata.

## REFERENCES

- Begg, G.A., J.A. Hare, and D.D. Sheehan 1999. The role of life history parameters as indicators of stock structure. *Fish. Res.* 43: 141-163.
- Bigelow, H.B. and W.C. Schroeder. 1953. *Fishes of the Gulf of Maine*. *Fish. Bull.* 53: 1-577.
- Brown, B.E. and R.C. Hennemuth. 1971a. Assessment of the yellowtail flounder fishery in subarea 5. ICNAF Res. Doc. 71/14.
- Burns, T.S., R. Schultz, and B.E. Brown. 1983. The commercial catch sampling program in the northeastern United States. *Can. Spec. Pub. Fish. Aquat. Sci.* 66.
- Cadrin, S.X. 2001. Cape Cod yellowtail flounder. In *Assessment of 19 Northeast Groundfish Stocks through 2000*. NEFSC Ref. Doc. 01-20: 67-79.
- Cadrin, S.X. and J. King. 2000. Cape Cod yellowtail flounder. In *Assessment of 11 Northeast Groundfish Stocks through 1999*. NEFSC Ref. Doc. 00-05: 83-98.
- Cadrin, S.X. and J. King. 2002. Cape Cod yellowtail flounder. Groundfish Assessment Review Meeting Working Paper E.
- Cadrin, S.X., J. King and L. Suslowicz. 1999. Status of the Cape Cod yellowtail flounder stock for 1998. NEFSC Ref. Doc. 99-04.
- Clark, S.H., L. O'Brien, and R.K. Mayo. 1981. Yellowtail flounder stock status. NEFC Lab. Ref. Doc. 81-10.
- Clark, S.H., M.M. McBride and B. Wells. 1984. Yellowtail flounder assessment update - 1984. NEFC Lab. Ref. Doc. 84-39.
- Collette, B.B. and G. Klein-MacPhee. 2002. *Bigelow and Schroeder's Fishes of the Gulf of Maine*. Smithsonian Press, Washington, D.C.
- Despres, L. I., T. R. Azarovitz, and C. J. Byrne. 1988. Twenty-five years of fish surveys in the northwest Atlantic: the NMFS Northeast Fisheries Center's bottom trawl survey program. *Mar. Fish. Rev.* 50(4): 69-71.

Gavaris, S. 1988. An adaptive framework for the estimation of population size. CAFSAC Res. Doc. 88/29.

Howe, A.B. 1975. Yellowtail flounder yield dynamics in the north shore closure area. MADMF unpublished report.

Lux, F.E. 1963. Identification of New England yellowtail flounder groups. Fish. Bull. 63: 1-10.

Lux, F.E. 1964. Landings, fishing effort, and apparent abundance in the yellowtail flounder fishery. ICNAF Res. Bull. No. 1: 5-21.

Lux, F.E. 1969. Landings per unit effort, age composition, and total mortality of yellowtail flounder, *Limanda ferruginea* (Storer), off New England. ICNAF Res. Bul. 6:47-69.

McBride, M.M. and B.E. Brown 1980. The status of the marine fishery resources of the northeastern United States. NOAA Tech. Mem. NMFS-F/NEC-5.

McBride, M.M. and S.H. Clark. 1983. Assessment status of yellowtail flounder (*Limanda ferruginea*) stocks off the northeastern United States. NEFC Lab. Ref. Doc. 83-32.

McBride, M.M. and M.P. Sissenwine. 1979. Yellowtail flounder (*Limanda ferruginea*) status of the stocks, February 1979. NEFC Lab. Ref. Doc. 79-06.

McBride, M.M. and M.P. Sissenwine. 1980. Yellowtail flounder of the Cape Cod area and northern Gulf of Maine. NEFC Lab. Ref. Doc. 80-16.

McBride, M.M., M.P. Sissenwine, B.E. Brown and L.M. Kerr. 1980. Yellowtail flounder (*Limanda ferruginea*) status of the stocks, March 1980. NEFC Lab. Ref. Doc. 80-20.

NEFC (Northeast Fisheries Center) 1986. Report of the second NEFC stock assessment workshop (second SAW). NEFC Ref. Doc. 86-09.

NEFSC (Northeast Fisheries Science Center) 1994. 1994. Special advisory on groundfish status on Georges Bank. In: Report of the 18<sup>th</sup> Northeast Regional Stock Assessment Workshop (18<sup>th</sup> SAW) the plenary.

NEFSC (Northeast Fisheries Science Center) 1998. 27<sup>th</sup> northeast regional stock assessment workshop (27<sup>th</sup> SAW). NEFC Ref. Doc. 98-15.

NEFSC (Northeast Fisheries Science Center). 2002. Final report of the Working Group on Re-Evaluation of Biological Reference Points for New England Groundfish. 19 March, 2002.

- O'Brien, L., J. Burnett, and R.K. Mayo. 1993. Maturation of nineteen species of finfish off the northeast coast of the United States, 1985-1990. NOAA Tech. Rep. NMFS 113.
- Overholtz, W. and S.X. Cadrin. 1998. Yellowtail flounder. NOAA Tech. Rep. NMFS-NE-115: 70-74.
- Parrack, M. 1974. Status review of ICNAF subarea 5 and statistical area 6 yellowtail flounder stocks. ICNAF Res. Doc. 74/99.
- Rago, P. 1994. Yellowtail flounder. NOAA Tech. Rep. NMFS-NE-108: 64-68.
- Royce, W.F., R.J. Buller, and E.D. Premetz. 1959. Decline of the yellowtail flounder (*Limanda ferruginea*) off New England. Fish. Bull. 146: 169-267.
- Sinclair, M. 1988. Marine populations: an essay on population regulation and speciation. Univ. Washington Press, Seattle.
- Sissenwine, M.E., B.E. Brown, and M.M. McBride. 1978. Yellowtail flounder (*Limanda ferruginea*): status of the stocks. NEFC Lab. Ref. Doc. 78-02.
- Thompson, W. F. and F. H. Bell. 1934. Effect of changes in intensity upon total yield and yield per unit of gear. Report of the International Fisheries Commission 8:7-49.

Table A2.1. Summary of management of Cape Cod-Gulf of Maine yellowtail flounder.

Year	Comments
1977	FCMA implemented March 1 Groundfish plan adopts quotas for cod, haddock, yellowtail flounder
1982	Interim Groundfish Plan adopted: Georges Bank and Gulf of Maine minimum mesh size of 5 1/8 inches, increasing to 5 1/2 inches in 1983 11 inch minimum size for yellowtail Scallop FMP implemented
1986	Northeast Multispecies FMP adopted: Minimum size for yellowtail flounder: 12 inches Minimum mesh size in GB/GOM: 5 1/2 inch cod end (no minimum size in SNE/MA) Seasonal yellowtail closure, March - May, between 69-30 and 72-30W Small mesh fisheries in GOM/GB area only restricted to specific seasons with limits on landings (not catch) of groundfish and inshore area of GOM
1989	Amendment 2: Yellowtail minimum size increased to 13 inches
1991	Amendment 4: Tightened restrictions on carrying small mesh while in Regulated Mesh Areas Mandated use of selective gear in shrimp fishery, leading to implementation of the Nordmore grate in 1993
1994	Amendment 5 and emergency regulations: DAS limits for most vessels West of 72-30W. Mesh determined by mesh requirements of summer flounder fishery (5 1/2 inch diamond or 6 inch square) GOM/GB mesh of 6 inches (diamond or square) Eliminated seasonal restrictions on small mesh fisheries in Small Mesh Exemption Area of inshore GOM Adopted Nordmore grate requirement into FMP Scallop Amendment 4: adopted permit moratorium, effort control/DAS program, 5.5 inch twine top minimum, and crew limits
1996	Amendment 7 Extended DAS limits to most vessels Limited possession of groundfish by scallop vessels to 300 pounds of regulated multispecies Established criteria for exempted fisheries Established exempted whiting fisheries in GOM/GB in three areas (Small Mesh Areas I and II in inshore GOM, Cultivator Shoals area on GB)
1999	Framework 27: (May 1) Increased square mesh minimum size to 6 1/2 inches in GOM/GB/SNE Regulated mesh areas Framework 29: (June)
	Amendment 9: (November): Revised overfishing definitions
	Scallop Framework 11 mandates 8 inch twine top, authorizes scallop access program for Closed Area II, with yellowtail flounder bycatch limits
2000	Scallop Framework 13: Scallop vessel closed area access programs with yellowtail bycatch limits Adopted management measures for small-mesh multispecies, establishing minimum mesh sizes and trip/possession limits to reduce mortality on silver, red, and offshore hake Framework 35: Established exempted whiting fishery in upper Cape Cod Bay using raised footrope trawl



Table A2.2. Cape Cod – Gulf of Maine yellowtail flounder catch.

	Cape Cod Landings	Cape Cod Discards	Gulf of Maine Landings	Gulf of Maine Discards	Total
1960	1,500	500	39	---	2,039
1961	1,800	600	22	---	2,422
1962	1,900	600	0	---	2,500
1963	3,600	1,000	0	---	4,600
1964	1,851	600	6	---	2,457
1965	1,498	500	8	---	2,006
1966	1,808	300	26	---	2,135
1967	1,542	800	50	---	2,391
1968	1,569	600	13	---	2,181
1969	1,346	300	75	---	1,722
1970	1,185	400	125	---	1,710
1971	1,662	700	56	---	2,418
1972	1,364	300	156	---	1,821
1973	1,662	0	63	---	1,724
1974	2,054	200	104	---	2,358
1975	2,027	0	194	---	2,220
1976	3,587	100	258	---	3,945
1977	3,469	0	252	---	3,722
1978	3,683	400	388	---	4,471
1979	4,163	500	276	---	4,939
1980	5,106	600	461	---	6,167
1981	3,149	600	425	---	4,174
1982	3,150	400	486	---	4,035
1983	1,884	300	324	---	2,509
1984	1,121	20	244	---	1,385
1985	967	77	205	77	1,326
1986	1,041	305	164	62	1,572
1987	1,159	198	194	73	1,624
1988	1,085	283	190	72	1,630
1989	909	390	209	47	1,555
1990	2,984	1,141	238	98	4,461
1991	1,472	405	265	110	2,251
1992	828	637	203	78	1,746
1993	628	90	158	31	907
1994	978	192	321	89	1,580
1995	1,207	233	124	111	1,674
1996	1,064	182	108	51	1,405
1997	1,040	257	74	20	1,392
1998	1,169	259	73	39	1,540
1999	1,089	107	121	40	1,357
2000	2,279	163	133	33	2,609
2001	2,362	447	143	35	2,988

Table A2.3. Samples of Cape Cod yellowtail flounder.

Year	half	trips	unclass. lengths	small lengths	large lengths	ages
1985	1	5	109	304	196	292
	2	12	0	825	543	357
1986	1	4	0	608	206	217
	2	6	0	321	172	240
1987	1	6	0	300	352	353
	2	5	0	284	269	207
1988	1	6	0	477	267	286
	2	5	0	291	364	252
1989	1	6	10	261	314	305
	2	4	97	262	173	200
1990	1	8	536	532	374	339
	2	6	636	429	276	137
1991	1	8	811	501	332	610
	2	7	109	531	242	277
1992	1	4	707	126	254	339
	2	7	136	262	457	268
1993	1	3	170	145	182	177
	2	3	273	244	74	114
1994	1	4	100	261	170	273
	2	3	0	106	144	149
1995	1	4	39	276	201	196
	2	6	998	392	275	157
1996	1	1	2560	0	87	196
	2	12	118	495	640	485
1997	1	7	343	388	483	556
	2	17	317	996	869	634
1998	1	7	4781	0	508	195
	2	6	165	0	600	165
1999	1	4	2501	278	60	49
	2	4	1024	268	116	57
2000	1	46	521	723	2775	903
	2	15	0	566	1057	395
2001	1	8	3502	251	570	192
	2	16	1950	393	774	436

Table A2.4a. Landings at age of Cape Cod yellowtail flounder.

Landings at age (thousands)	age								sum
	1	2	3	4	5	6	7	8+	
1985	5	738	700	522	268	89	3	7	2,332
1986	0	1,998	579	223	32	6	0	1	2,838
1987	0	609	1,786	268	100	29	12	5	2,808
1988	1	802	1,043	625	172	36	0	0	2,679
1989	0	726	989	231	31	3	2	2	1,986
1990	0	692	6,191	416	32	16	7	3	7,357
1991	0	311	903	1,455	249	33	27	1	2,978
1992	0	338	807	514	150	6	5	1	1,821
1993	0	25	684	573	90	24	15	7	1,418
1994	0	87	1,023	650	236	65	38	9	2,109
1995	0	233	1,730	808	152	78	5	0	3,006
1996	0	150	1,097	798	287	11	5	2	2,349
1997	0	481	1,086	702	160	13	0	1	2,443
1998	0	257	1,681	472	141	41	3	0	2,595
1999	0	328	1,134	646	106	43	1	0	2,258
2000	0	942	2,625	1,152	138	18	13	3	4,891
2001	0	807	2,933	1,058	152	24	13	1	4,987
mean	0	518	1,429	594	147	33	8	3	2,732

Landed weight at age (kg)	age							
	1	2	3	4	5	6	7	8+
1985	0.19	0.32	0.37	0.49	0.60	0.73	1.20	1.39
1986		0.32	0.46	0.57	0.73	0.90	---	1.40
1987		0.31	0.42	0.55	0.65	0.81	1.03	1.18
1988	0.11	0.31	0.37	0.53	0.70	0.85	---	---
1989		0.38	0.45	0.65	0.92	1.41	1.24	1.24
1990		0.31	0.41	0.56	0.82	0.90	0.99	1.17
1991		0.35	0.39	0.54	0.74	0.99	1.06	1.01
1992		0.32	0.41	0.53	0.61	0.73	1.53	1.91
1993		0.31	0.38	0.43	0.74	0.95	1.01	1.17
1994		0.29	0.38	0.50	0.62	0.68	1.04	1.11
1995		0.35	0.36	0.43	0.61	0.78	1.11	---
1996		0.32	0.42	0.50	0.53	0.91	1.19	1.18
1997		0.39	0.41	0.47	0.57	0.78	1.30	1.31
1998		0.33	0.41	0.55	0.63	1.00	1.62	---
1999		0.36	0.45	0.56	0.58	0.88	1.62	---
2000		0.38	0.44	0.56	0.61	0.82	0.87	1.12
2001		0.38	0.44	0.59	0.74	1.07	0.92	1.93
mean	0.15	0.33	0.41	0.52	0.67	0.89	1.23	1.28

Table A2.4b. Landings at age of northern Gulf of Maine yellowtail flounder.

Landings at age (thousands)		age							
year	1	2	3	4	5	6	7	8+	sum
1985	1	138	139	112	61	20	1	1	474
1986	0	235	116	49	8	1	0	0	409
1987	0	75	315	41	17	5	2	1	456
1988	0	115	239	119	27	5	0	0	505
1989	0	112	295	55	6	1	0	0	469
1990	0	26	472	56	3	2	0	0	559
1991	0	50	162	263	43	6	7	0	531
1992	0	72	223	130	38	1	1	0	465
1993	0	9	184	150	20	5	3	1	372
1994	0	42	344	200	74	36	11	1	708
1995	0	20	196	90	15	7	0	0	329
1996	0	7	83	93	39	2	1	0	225
1997	0	12	78	66	13	0	0	0	169
1998	0	12	106	31	8	3	0	0	160
1999	0	28	119	85	12	7	0	0	251
2000	0	62	163	70	4	0	0	0	299
2001	0	35	153	100	15	5	0	0	307
mean	0	62	199	101	24	6	2	0	393

Landed weight at age (kg)		age							
year	1	2	3	4	5	6	7	8+	
1985	0.19	0.31	0.37	0.49	0.60	0.72	1.17	1.39	
1986		0.32	0.46	0.58	0.74	0.93		1.40	
1987		0.31	0.41	0.56	0.67	0.86	1.10	1.25	
1988	0.11	0.29	0.33	0.48	0.64	0.76			
1989		0.37	0.41	0.69	0.95	1.41	1.24	1.24	
1990		0.31	0.41	0.54	0.90	0.99	0.99	1.79	
1991		0.34	0.37	0.54	0.76	0.95	1.07	1.53	
1992		0.32	0.40	0.50	0.58	0.80	1.49	1.89	
1993		0.31	0.38	0.42	0.72	0.94	1.00	1.14	
1994		0.28	0.38	0.49	0.60	0.67	1.04	1.12	
1995		0.32	0.34	0.40	0.60	0.80	1.18		
1996		0.31	0.43	0.50	0.53	0.91	1.19	1.19	
1997		0.38	0.40	0.47	0.56	0.93	1.30	1.30	
1998		0.33	0.41	0.54	0.63	1.00	1.62		
1999		0.35	0.42	0.58	0.58	0.85	1.62		
2000		0.37	0.42	0.55	0.59	0.97	0.87	1.06	
2001		0.35	0.41	0.56	0.57	0.69	1.62		
mean	0.15	0.33	0.40	0.52	0.66	0.89	1.23	1.36	

Table A2.5a. Discard estimates for Cape Cod yellowtail flounder, by fishery.

<b>Large-mesh Trawl Fishery</b>							
year	half	observed kept (mt)	discard (mt)	d/k	total landings (mt)	discards (mt)	discard lengths
1998	1	0.1551	0.0095	0.061	355	21.8	6
	2	0.1810	0.0230	0.127	426	54.1	7
1999	1	0.0091	0.0014	0.150	282	42.3	48
	2	2.2226	0.0945	0.043	564	24.0	0
2000	1	10.6743	0.4195	0.039	871	34.2	608
	2	1.1785	0.0431	0.037	1079	39.4	45
2001	1	5.9789	0.6183	0.103	789	81.6	42
	2	6.3832	1.6209	0.254	1311	332.8	890

<b>Gillnet Fishery</b>							
year	half	observed kept (mt)	discard (mt)	d/k	total landings (mt)	discards (mt)	
1998	1	33.6627	0.5355	0.016	360	5.7	5101
	2	1.1959	0.0290	0.024	23	0.5	159
1999	1	16.6555	0.3622	0.022	207	4.5	521
	2	3.3086	0.0174	0.005	36	0.2	5
2000	1	29.5608	0.4748	0.016	295	4.7	426
	2	0.1919	0.0095	0.050	32	1.6	3
2001	1	13.1767	0.1202	0.009	223	2.0	63
	2	1.2431	0.0095	0.008	35	0.3	0

<b>Small-mesh Trawl Fishery</b>							
year	half	observed effort (d)	discard (mt)	mt/d	total effort	discards (mt)	
1998	1	0.0000	0.0000	0.046 *	74	3.4	0
	2	0.0000	0.0000	0.046 *	308	14.0	0
1999	1	0.0000	0.0000	0.046 *	39	1.8	0
	2	0.4583	0.0209	0.046	214	9.7	0
2000	1	0.0000	0.0000	0.009 *	27	0.2	0
	2	9.0417	0.0794	0.009	201	1.8	0
2001	1	0.8125	0.0123	0.015	51	0.8	0
	2	1.0792	0.0014	0.001	121	0.2	0

<b>Scallop Dredge Fishery</b>							
year	half	observed effort (d)	discard (mt)	mt/d	total effort	discards (mt)	
1998	1	0.6250	0.0302	0.048	1019	49.2	19
	2	7.0833	0.5643	0.080	1379	109.8	296
1999	1	2.7917	0.0372	0.013	1092	14.6	23
	2	6.7500	0.0445	0.007	1478	9.7	11
2000	1	0.0000	0.0000	0.045 *	772	34.6	0
	2	0.0000	0.0000	0.045 *	1045	46.8	0
2001	1	0.2583	0.0116	0.045	284	12.7	0
	2	0.0000	0.0000	0.045 *	384	17.2	0

\* assumed from adjacent cell

Table A2.5b. Discard estimates for the northern Gulf of Maine yellowtail flounder, by fishery.

Trawl Fishery							
year	half	observed kept	observed discard	d/k	landings	discards	discard lengths
1989	1	0.097	0.010	0.103	121	12	26
	2	0.029	0.005	0.186	45	8	0
1990	1	0.034	0.010	0.294	117	34	8
	2	0.007	0.002	0.265	80	21	0
1991	1	0.273	0.063	0.231	152	35	10
	2	0.122	0.047	0.387	86	33	0
1992	1	0.196	0.055	0.282	129	36	0
	2	0.720	0.017	0.024	56	1	0
1993	1	0.036	0.002	0.050	71	4	0
	2	0.681	0.082	0.120	72	9	2
1994	1	0.000	0.000	0.235	220	52	0
	2	0.000	0.000	0.501	55	28	0
1995	1	0.014	0.006	0.454	70	32	5
	2	0.002	0.006	2.478	26	63	14
1996	1	0.013	0.004	0.311	82	26	11
	2	0.000	0.060	0.501	13	7	147
1997	1	0.003	0.001	0.185	46	9	1
	2	0.000	0.000	0.501	10	5	0
1998	1	0.038	0.012	0.314	45	14	38
	2	0.000	0.000	0.501	17	8	0
1999	1	0.000	0.000	0.235	69	16	0
	2	0.000	0.000	0.501	23	12	0
2000	1	0.660	0.079	0.119	78	9	102
	2	0.186	0.066	0.353	44	15	27
2001	1	0.158	0.039	0.247	103	25	190
	2	0.206	0.041	0.199	32	6	64

Table A2.5b, continued.

Shrimp Fishery

year	half	observed effort	observed discard	d/e	effort	discards	discard lengths
1989	1	11	0.017	0.002	8200	13	18
	2	4	0.014	0.004	1361	5	8
1990	1	19	0.067	0.004	8647	31	83
	2	2	0.003	0.002	1111	2	0
1991	1	35	0.171	0.005	7402	36	222
	2	5	0.020	0.004	566	2	0
1992	1	62	0.322	0.005	7413	39	175
	2	3	0.002	0.001	385	0	2
1993	1	45	0.127	0.003	5666	16	394
	2	1	0.003	0.003	492	1	0
1994	1	35	0.047	0.001	4777	6	86
	2	4	0.010	0.002	1213	3	70
1995	1	34	0.052	0.002	8494	13	212
	2	6	0.008	0.001	1971	3	29
1996	1	13	0.020	0.002	9656	15	88
	2	2	0.004	0.002	2135	4	14
1997	1	6	0.003	0.000	9648	4	9
	2	0	0.000	0.002	1086	3	0
1998	1	0	0.000	0.002	6295	15	0
	2	0	0.000	0.002	311	1	0
1999	1	0	0.000	0.002	3811	9	0
	2	0	0.000	0.002	0	0	0
2000	1	0	0.000	0.002	3382	8	0
	2	0	0.000	0.002	0	0	0
2001	1	2	0.002	0.001	2963	3	0
	2	0	0.000	0.002	0	0	0

Table A2.5b, continued.

Gillnet Fishery

year	half	observed kept	observed discard	d/k	landings	discards	discard lengths
1989	1	0.000	0.000	0.323	25	8	0
	2	0.013	0.004	0.323	2	1	0
1990	1	0.049	0.012	0.249	29	7	0
	2	0.004	0.012	2.878	1	3	0
1991	1	0.074	0.011	0.147	12	2	1
	2	0.069	0.075	1.099	1	1	3
1992	1	0.968	0.095	0.098	11	1	40
	2	0.065	0.026	0.403	1	0	7
1993	1	1.292	0.098	0.076	13	1	31
	2	0.010	0.003	0.308	1	0	1
1994	1	0.662	0.005	0.007	44	0	4
	2	0.222	0.003	0.011	2	0	1
1995	1	2.794	0.015	0.005	27	0	36
	2	0.083	0.001	0.008	1	0	1
1996	1	2.775	0.004	0.001	11	0	3
	2	0.055	0.001	0.026	0	0	1
1997	1	7.112	0.008	0.001	17	0	7
	2	0.067	0.000	0.000	1	0	0
1998	1	0.031	0.002	0.075	11	1	0
	2	0.003	0.000	0.000	0	0	0
1999	1	0.076	0.000	0.000	23	0	0
	2	0.003	0.002	0.500	6	3	0
2000	1	0.267	0.000	0.000	10	0	2
	2	0.002	0.000	0.000	1	0	0
2001	1	0.047	0.007	0.145	6	1	0
	2	0.003	0.000	0.000	2	0	0



Table A2.6a. Discards at age of Cape Cod yellowtail flounder.

	Discards at age (thousands)			age		
	1	2	3	4	5	6
1985	340	184	34	0	0	0
1986	79	1,657	75	26	0	0
1987	14	877	168	0	0	0
1988	360	1,328	177	0	0	0
1989	114	1,405	396	1	0	0
1990	81	2,047	2,501	19	0	0
1991	460	895	561	100	7	0
1992	1,688	3,543	731	29	3	0
1993	138	324	173	30	0	0
1994	60	383	279	49	4	1
1995	453	469	652	50	2	0
1996	7	397	327	94	11	0
1997	1	399	351	117	22	1
1998	56	393	420	46	11	0
1999	11	153	188	22	3	3
2000	3	81	219	76	15	4
2001	19	837	700	26	3	1
mean	228	904	468	40	5	1

	Discarded weight at age (kg)			age		
	1	2	3	4	5	6
1985	0.13	0.15	0.15			
1986	0.10	0.17	0.19	0.18		
1987	0.06	0.19	0.19			
1988	0.12	0.15	0.20			
1989	0.13	0.21	0.25	0.36		
1990	0.08	0.24	0.27	0.33		
1991	0.12	0.19	0.27	0.37	0.54	
1992	0.05	0.11	0.22	0.31	0.36	
1993	0.09	0.15	0.27	0.33	0.63	
1994	0.08	0.20	0.29	0.32	0.38	0.34
1995	0.07	0.16	0.23	0.33	0.48	
1996	0.04	0.15	0.28	0.36	0.50	
1997	0.03	0.21	0.29	0.39	0.54	0.65
1998	0.03	0.23	0.33	0.37	0.46	0.59
1999	0.03	0.25	0.29	0.45	0.48	0.99
2000	0.03	0.29	0.38	0.57	0.61	0.80
2001	0.03	0.26	0.30	0.46	0.80	1.13
mean	0.07	0.19	0.26	0.37	0.53	0.75

Table A2.6b. Discards at age of northern Gulf of Maine yellowtail flounder.

	Discards at age (thousands)		age					sum
	1	2	3	4	5	6	7	
1985	341	185	34	0	0	0	0	560
1986	16	336	15	5	0	0	0	372
1987	5	324	62	0	0	0	0	391
1988	91	336	45	0	0	0	0	472
1989	4	53	132	10	0	0	0	199
1990	3	134	236	2	0	0	0	375
1991	5	116	139	134	0	0	0	394
1992	21	26	200	58	0	0	0	305
1993	21	67	33	43	0	0	0	164
1994	15	22	7	132	53	41	30	300
1995	5	29	175	120	70	0	0	400
1996	0	38	84	92	2	0	0	216
1997	2	20	58	4	0	0	0	84
1998	52	46	92	14	3	0	0	207
1999	6	55	108	17	1	0	0	187
2000	7	58	52	12	0	0	0	130
2001	1	26	26	78	4	0	0	134
mean	35	110	88	43	8	2	2	288

	Discarded weight at age (kg)		age				
	1	2	3	4	5	6	7
1985	0.13	0.15	0.15				
1986	0.10	0.17	0.19	0.18			
1987	0.06	0.19	0.19				
1988	0.12	0.15	0.20				
1989	0.13	0.21	0.24	0.39			
1990	0.09	0.20	0.29	0.41			
1991	0.08	0.22	0.28	0.32			
1992	0.06	0.11	0.27	0.32			
1993	0.08	0.12	0.25	0.30			
1994	0.09	0.12	0.18	0.27	0.31	0.36	0.54
1995	0.04	0.14	0.25	0.32	0.34		
1996		0.10	0.25	0.28	0.43		
1997	0.12	0.09	0.30	0.35			
1998	0.06	0.15	0.26	0.31	0.27		
1999	0.19	0.13	0.24	0.32	0.49		
2000	0.06	0.14	0.33	0.49	0.30		
2001	0.07	0.19	0.23	0.29	0.37		
mean	0.09	0.15	0.24	0.33	0.36	0.36	0.54

Table A2.7a. Indices of Cape Cod – Gulf of Maine yellowtail flounder abundance at age and biomass.

MADMF Spring Survey	age								sum	kg/tow
	1	2	3	4	5	6	7	8+		
1978	2.71	20.69	11.82	1.60	0.63	0.54	0.10	0.13	38.22	10.16
1979	2.63	22.58	13.85	3.68	0.86	0.00	0.17	0.00	43.77	11.38
1980	2.68	17.62	10.10	2.30	0.15	0.00	0.00	0.00	32.85	10.03
1981	5.61	58.83	9.00	2.26	1.59	0.27	0.00	0.00	77.56	16.35
1982	0.69	17.06	17.04	4.45	0.94	0.06	0.04	0.00	40.28	12.85
1983	3.13	8.50	11.51	4.28	0.04	0.17	0.03	0.00	27.66	9.00
1984	0.43	18.13	7.56	2.29	0.85	0.00	0.00	0.00	29.26	7.37
1985	1.97	8.27	7.15	1.52	0.59	0.39	0.05	0.05	19.99	5.21
1986	1.73	15.39	1.74	0.24	0.21	0.04	0.00	0.00	19.36	4.52
1987	2.53	4.95	5.31	0.97	0.27	0.11	0.08	0.00	14.22	3.67
1988	3.10	14.46	2.52	0.60	0.05	0.02	0.00	0.00	20.74	3.83
1989	0.67	22.26	3.18	1.08	0.06	0.00	0.00	0.00	27.25	4.73
1990	0.63	11.77	15.57	0.63	0.14	0.01	0.02	0.01	28.77	6.60
1991	0.06	5.34	3.31	2.15	0.48	0.12	0.05	0.00	11.50	3.32
1992	1.30	11.03	9.71	2.38	1.45	0.03	0.03	0.00	25.94	6.54
1993	0.63	7.99	6.31	1.94	0.23	0.06	0.20	0.03	17.38	4.60
1994	2.67	24.02	7.53	1.49	0.33	0.12	0.00	0.00	36.15	6.23
1995	7.51	14.64	24.96	2.88	1.20	0.02	0.02	0.00	51.22	10.38
1996	1.17	18.03	14.70	6.78	1.74	0.00	0.04	0.00	42.46	9.25
1997	0.52	16.94	12.22	4.04	0.54	0.00	0.00	0.00	34.26	7.55
1998	0.55	4.96	13.50	1.25	0.19	0.02	0.00	0.00	20.46	5.17
1999	0.10	6.34	10.90	1.28	0.08	0.00	0.00	0.00	18.70	5.08
2000	0.83	21.92	33.29	11.28	1.30	0.52	0.00	0.00	69.14	20.37
2001	0.22	10.21	38.20	10.39	1.68	0.00	0.00	0.00	60.71	19.34
2002	0.36	1.29	13.84	5.34	0.26	0.17	0.00	0.00	21.27	7.43
mean	1.78	15.33	12.19	3.08	0.63	0.11	0.03	0.01	33.16	8.44

Table A2.7b.

**MADMF Fall Survey**

	age									sum	kg/tow
	0	1	2	3	4	5	6	7	8+		
1978	0.04	7.13	7.74	1.45	0.11	0.00	0.01	0.00	0.00	16.48	2.80
1979	0.03	24.11	22.82	1.78	0.06	0.00	0.00	0.00	0.00	48.80	7.33
1980	0.03	26.54	12.38	2.70	0.35	0.00	0.00	0.00	0.00	42.00	5.90
1981	0.00	2.93	6.54	1.54	0.23	0.17	0.00	0.00	0.00	11.41	2.76
1982	0.00	9.58	3.36	5.54	0.30	0.08	0.00	0.00	0.00	18.86	4.20
1983	0.00	9.68	6.68	1.60	0.13	0.00	0.00	0.00	0.00	18.09	3.39
1984	0.04	1.91	3.00	0.86	0.39	0.10	0.02	0.00	0.04	6.37	1.18
1985	0.04	5.70	1.63	1.03	0.00	0.00	0.00	0.00	0.02	8.42	1.17
1986	0.01	2.60	4.95	0.20	0.03	0.01	0.00	0.00	0.00	7.80	1.36
1987	0.44	5.85	2.30	0.49	0.07	0.02	0.00	0.00	0.00	9.17	1.09
1988	0.00	8.96	11.24	2.27	0.15	0.00	0.00	0.00	0.00	22.62	3.71
1989	0.00	2.64	5.22	0.96	0.10	0.00	0.00	0.00	0.00	8.92	1.52
1990	0.00	5.20	11.93	4.84	0.01	0.00	0.00	0.00	0.00	21.98	4.16
1991	0.00	3.76	5.14	5.03	0.86	0.00	0.00	0.00	0.00	14.78	3.23
1992	0.20	7.18	3.62	2.08	0.47	0.20	0.00	0.00	0.00	13.75	2.00
1993	0.00	8.39	7.29	5.80	1.43	0.00	0.00	0.00	0.00	22.91	3.99
1994	0.00	2.36	11.79	1.79	0.15	0.00	0.00	0.00	0.00	16.09	3.27
1995	0.00	8.38	15.16	5.85	0.00	0.00	0.00	0.00	0.00	29.40	5.75
1996	0.01	1.87	3.94	2.18	0.17	0.00	0.00	0.00	0.00	8.17	1.56
1997	0.00	1.01	7.38	1.14	0.16	0.10	0.00	0.00	0.00	9.79	2.10
1998	0.00	7.05	6.74	2.25	0.00	0.00	0.00	0.00	0.00	16.05	2.68
1999	0.15	4.73	11.94	4.10	0.65	0.08	0.00	0.00	0.00	21.66	4.71
2000	0.00	1.36	8.25	3.53	0.22	0.10	0.00	0.03	0.00	13.48	3.46
2001	0.00	0.57	8.06	4.23	0.14	0.00	0.00	0.00	0.00	13.00	3.55
mean	0.04	6.65	7.88	2.63	0.26	0.04	0.00	0.00	0.00	17.50	3.20

Table A2.7c.

**NMFS Spring Survey**

year	1	2	3	4	5	6	7	8+	sum	kg/tow
1977	0.775	0.329	0.185	0.049	0.093	0.000	0.000	0.000	1.431	0.566
1978	0.000	0.057	0.247	0.036	0.088	0.000	0.000	0.000	0.427	0.209
1979	0.228	0.315	0.748	0.770	0.068	0.021	0.000	0.019	2.169	0.795
1980	0.000	4.150	2.189	0.828	0.167	0.000	0.000	0.000	7.334	2.426
1981	0.041	2.921	2.198	1.143	0.584	0.473	0.179	0.000	7.538	2.468
1982	0.016	1.195	3.009	1.519	0.416	0.232	0.219	0.099	6.705	2.814
1983	1.190	3.203	2.093	1.298	0.092	0.064	0.000	0.000	7.939	2.340
1984	0.039	1.020	0.606	0.394	0.257	0.023	0.032	0.069	2.440	0.809
1985	0.047	0.806	0.865	0.205	0.123	0.043	0.000	0.000	2.089	0.615
1986	0.024	1.786	0.198	0.137	0.100	0.000	0.000	0.000	2.245	0.470
1987	0.062	1.599	2.356	0.637	0.538	0.570	0.611	0.304	6.676	2.971
1988	0.896	3.781	0.922	0.513	0.268	0.097	0.057	0.000	6.533	1.077
1989	0.177	2.179	1.442	0.372	0.274	0.038	0.038	0.038	4.559	0.863
1990	2.285	6.144	0.210	0.000	0.099	0.000	0.000	0.000	8.739	1.948
1991	0.421	3.554	2.834	1.049	0.222	0.000	0.047	0.000	8.128	1.783
1992	0.155	0.915	1.835	0.498	0.018	0.000	0.000	0.000	3.421	0.764
1993	0.064	0.656	1.045	0.563	0.000	0.000	0.000	0.000	2.327	0.501
1994	0.347	2.631	1.578	0.951	0.593	0.208	0.000	0.000	6.308	1.201
1995	0.182	1.040	3.978	2.991	0.432	0.048	0.000	0.000	8.670	2.036
1996	0.015	0.547	1.430	2.009	0.335	0.000	0.000	0.000	4.336	1.108
1997	0.021	0.934	2.025	1.545	0.288	0.000	0.000	0.000	4.813	1.311
1998	0.000	0.748	2.934	0.887	0.144	0.000	0.000	0.000	4.712	1.155
1999	0.018	0.848	3.633	1.853	0.332	0.147	0.000	0.000	6.831	1.977
2000	0.238	3.931	17.630	5.837	0.953	0.715	0.000	0.000	29.305	9.506
2001	0.000	1.201	4.878	1.030	0.216	0.000	0.000	0.000	7.324	2.292
2002	0.015	1.568	7.092	3.271	0.213	0.026	0.000	0.026	12.211	4.554
average	0.279	1.848	2.622	1.169	0.266	0.104	0.046	0.021	6.354	1.868

Table A2.7d.

**NMFS Fall Survey**

year	1	2	3	4	5	6	7	8+sum	kg/tow	
1977	4.882	9.330	4.987	0.788	0.197	0.053	0.062	0.123	20.421	7.526
1978	0.354	3.540	2.383	0.152	0.168	0.015	0.015	0.015	6.642	2.047
1979	4.003	4.072	1.227	0.306	0.075	0.016	0.000	0.000	9.698	2.596
1980	10.534	8.937	4.115	1.556	0.340	0.000	0.037	0.000	25.518	6.557
1981	1.596	4.965	1.330	0.532	0.266	0.177	0.000	0.000	8.866	1.881
1982	0.572	2.743	2.593	0.313	0.379	0.000	0.000	0.000	6.599	2.056
1983	0.285	0.546	0.312	0.020	0.000	0.000	0.000	0.000	1.162	0.264
1984	0.320	1.124	0.443	0.763	0.546	0.151	0.075	0.075	3.497	1.380
1985	4.609	1.778	1.352	0.068	0.068	0.068	0.000	0.000	7.943	1.583
1986	1.308	3.613	0.297	0.019	0.019	0.000	0.000	0.000	5.257	0.970
1987	0.564	1.357	0.476	0.057	0.049	0.000	0.000	0.000	2.503	0.556
1988	3.128	4.587	0.443	0.134	0.000	0.000	0.000	0.000	8.292	1.126
1989	1.657	5.338	2.008	0.417	0.146	0.066	0.000	0.000	9.631	2.202
1990	3.500	6.201	2.874	0.046	0.010	0.000	0.000	0.000	12.630	2.345
1991	1.840	1.643	1.639	0.332	0.000	0.000	0.000	0.000	5.453	1.202
1992	2.537	2.758	1.878	0.948	0.183	0.142	0.000	0.000	8.447	1.932
1993	4.445	4.507	0.601	0.099	0.000	0.000	0.000	0.000	9.652	1.106
1994	2.472	7.368	2.596	0.824	0.354	0.000	0.000	0.000	13.615	2.701
1995	0.516	0.713	1.068	0.297	0.171	0.000	0.000	0.000	2.765	0.783
1996	1.058	2.907	4.928	1.179	0.133	0.000	0.000	0.000	10.205	2.614
1997	1.049	2.440	2.945	1.223	0.670	0.115	0.000	0.000	8.441	2.277
1998	1.022	2.984	1.197	0.986	0.234	0.000	0.000	0.000	6.422	1.637
1999	4.147	8.090	5.532	1.697	0.698	0.027	0.000	0.000	20.191	5.983
2000	0.955	6.729	4.455	0.260	0.000	0.000	0.000	0.000	12.399	3.472
2001	0.117	3.835	2.231	0.114	0.019	0.000	0.000	0.000	6.316	1.889
average	2.299	4.084	2.156	0.525	0.189	0.033	0.008	0.009	9.303	2.347

Table A2.8. Correlation among indices of abundance at age for Cape Cod – Gulf of Maine yellowtail flounder.

Age-1	MASS_F	MASS_S	NMFS_S		
MASS_F	1.00				
MASS_S	0.07	1.00			
NMFS_S	0.48	-0.10	1.00		

Age-2	MASS_F	MASS_S	NMFS_F	NMFS_S	
MASS_F	1.00				
MASS_S	0.33	1.00			
NMFS_F	0.17	0.59	1.00		
NMFS_S	0.16	0.59	0.63	1.00	

Age-3	MASS_F	MASS_S	NMFS_F	NMFS_S	
MASS_F	1.00				
MASS_S	0.45	1.00			
NMFS_F	0.58	0.37	1.00		
NMFS_S	0.64	0.45	0.54	1.00	

Age-4	MASS_F	MASS_S	NMFS_F	NMFS_S	
MASS_F	1.00				
MASS_S	0.56	1.00			
NMFS_F	0.69	0.56	1.00		
NMFS_S	0.43	0.48	0.63	1.00	

Age-5	MASS_F	MASS_S	NMFS_F	NMFS_S	
MASS_F	1.00				
MASS_S	0.00	1.00			
NMFS_F	-0.04	0.28	1.00		
NMFS_S	-0.08	0.50	0.24	1.00	

Age-6+	MASS_F	MASS_S	NMFS_F	NMFS_S	
MASS_F	1.00				
MASS_S	0.10	1.00			
NMFS_F	-0.01	0.04	1.00		
NMFS_S	-0.44	0.52	0.27	1.00	

Table A2.9. Results of virtual population analysis of Cape Cod – Gulf of Maine yellowtail flounder.

<b>Abundance (thousands)</b>						
	age-1	age-2	age-3	age-4	age-5+	sum
1985	12302	3195	1696	1168	814	19175
1986	6030	9451	1489	568	88	17626
1987	8083	4851	3915	509	273	17631
1988	28844	6601	2266	1096	345	39152
1989	11325	23207	3068	495	75	38170
1990	11634	9166	16922	872	111	38705
1991	13071	9449	4883	5349	1008	33760
1992	9639	10281	6495	2401	668	29484
1993	10404	6346	4817	3543	731	25841
1994	7177	8375	4811	2972	1710	25045
1995	6380	5808	6372	2443	745	21748
1996	9625	4809	4076	2725	898	22133
1997	8590	7874	3402	1896	442	22204
1998	10724	7031	5621	1361	504	25241
1999	13439	8682	5117	2522	575	30335
2000	10047	10988	6598	2788	411	30832
2001	1939	8218	7961	2634	447	21199
2002	---	1569	5185	3069	1188	---
average	10544	8106	5261	2134	613	26958

<b>Fishing Mortality</b>						
	age-1	age-2	age-3	age-4	age-5+	age 3-4
1985	0.06	0.56	0.89	0.92	0.92	0.90
1986	0.02	0.68	0.87	0.90	0.90	0.88
1987	0.00	0.56	1.07	1.11	1.11	1.07
1988	0.02	0.57	1.32	1.39	1.39	1.34
1989	0.01	0.12	1.06	1.09	1.09	1.06
1990	0.01	0.43	0.95	0.98	0.98	0.95
1991	0.04	0.17	0.51	0.52	0.52	0.52
1992	0.22	0.56	0.41	0.41	0.41	0.41
1993	0.02	0.08	0.28	0.28	0.28	0.28
1994	0.01	0.07	0.48	0.48	0.48	0.48
1995	0.08	0.15	0.65	0.66	0.66	0.65
1996	0.00	0.15	0.57	0.57	0.57	0.57
1997	0.00	0.14	0.72	0.73	0.73	0.72
1998	0.01	0.12	0.60	0.61	0.61	0.60
1999	0.00	0.07	0.41	0.41	0.41	0.41
2000	0.00	0.12	0.72	0.73	0.73	0.72
2001	0.01	0.26	0.75	0.75	0.75	0.75
average	0.03	0.28	0.72	0.74	0.74	0.73



Table A2.9 continued.

**Spawning Stock Biomass (mt)**

	age-1	age-2	age-3	age-4	age-5+	sum
1985	0	50	313	359	332	1055
1986	0	131	332	191	43	696
1987	0	65	728	162	115	1070
1988	0	81	331	294	128	834
1989	0	439	559	188	44	1230
1990	0	141	3138	293	60	3633
1991	0	155	1000	2063	591	3810
1992	0	78	1308	931	331	2648
1993	0	72	1149	1216	490	2926
1994	0	132	1087	1028	836	3083
1995	0	88	1159	700	312	2260
1996	0	63	912	928	364	2267
1997	0	164	715	592	177	1647
1998	0	128	1272	514	255	2169
1999	0	192	1319	1095	303	2909
2000	0	277	1567	1058	184	3087
2001	0	174	1777	992	234	3177
average	0	143	1098	741	282	2265

Table A2.10. Yield and biomass per recruit of Cape Cod – Gulf of Maine yellowtail flounder.

---

The NEFC Yield and Stock Size per Recruit Program - PDBYPRC  
 PC Ver.1.2 [Method of Thompson and Bell (1934)] 1-Jan-1992

-----

Run Date: 4-12-2002; Time: 14:49:47.35  
 CC\_GOM YELLOWTAIL FLOUNDER - 1994-2001 INPUT

---

Proportion of F before spawning: .4167  
 Proportion of M before spawning: .4167  
 Natural Mortality is Constant at: .200  
 Initial age is: 1; Last age is: 8  
 Last age is a PLUS group;  
 Original age-specific PRs, Mats, and Mean Wts from file:  
 ==> CCGOMYT.DAT

-----

Age-specific Input data for Yield per Recruit Analysis

-----

Age	Fish Mort Pattern	Nat Mort Pattern	Proportion Mature	Average Weights Catch	Stock
1	.0200	1.0000	.0000	.043	.043
2	.2200	1.0000	.0800	.273	.273
3	.9800	1.0000	.8100	.387	.387
4	1.0000	1.0000	1.0000	.501	.501
5	1.0000	1.0000	1.0000	.588	.588
6	1.0000	1.0000	1.0000	.845	.845
7	1.0000	1.0000	1.0000	1.176	1.176
8+	1.0000	1.0000	1.0000	1.328	1.328

-----

Summary of Yield per Recruit Analysis for:  
 CC\_GOM YELLOWTAIL FLOUNDER - 1994-2001 INPUT

---

Slope of the Yield/Recruit Curve at F=0.00: -->	3.0044
F level at slope=1/10 of the above slope (F0.1): ----->	.195
Yield/Recruit corresponding to F0.1: ----->	.2205
F level to produce Maximum Yield/Recruit (Fmax): ----->	.437
Yield/Recruit corresponding to Fmax: ----->	.2432
F level at 40 % of Max Spawning Potential (F40): ----->	.174
SSB/Recruit corresponding to F40: ----->	1.1917

---

Table A2.10 cont.

	FMORT	TOTCTHN	TOTCTHW	TOTSTKN	TOTSTKW	SPNSTKN	SPNSTKW	% MSP
	.000	.00000	.00000	5.5167	3.5367	3.3453	2.9798	100.00
	.100	.23532	.16955	4.3458	2.1815	2.1818	1.6643	55.85
F0.1	.195	.34935	.22052	3.7809	1.5853	1.6236	1.0959	36.78
F40%	.174	.32915	.21343	3.8808	1.6866	1.7221	1.1917	39.99
	.200	.35385	.22197	3.7586	1.5630	1.6017	1.0748	36.07
	.300	.42566	.23872	3.4049	1.2250	1.2549	.7584	25.45
	.400	.47407	.24300	3.1678	1.0191	1.0246	.5688	19.09
Fmax	.437	.48838	.24322	3.0981	.9623	.9573	.5172	17.36
	.500	.50912	.24277	2.9975	.8838	.8607	.4462	14.97
	.600	.53579	.24102	2.8687	.7896	.7383	.3622	12.15
	.700	.55687	.23890	2.7677	.7210	.6436	.3018	10.13
	.800	.57404	.23682	2.6861	.6691	.5682	.2567	8.62
	.900	.58834	.23493	2.6186	.6286	.5067	.2221	7.45
	1.000	.60050	.23325	2.5617	.5962	.4557	.1947	6.53
	1.100	.61099	.23175	2.5128	.5696	.4128	.1725	5.79
	1.200	.62018	.23041	2.4704	.5473	.3762	.1543	5.18
	1.300	.62832	.22919	2.4330	.5284	.3446	.1390	4.67
	1.400	.63560	.22807	2.3998	.5120	.3171	.1261	4.23
	1.500	.64217	.22702	2.3699	.4977	.2929	.1150	3.86
	1.600	.64814	.22604	2.3429	.4851	.2715	.1054	3.54
	1.700	.65361	.22511	2.3182	.4738	.2525	.0970	3.25
	1.800	.65865	.22422	2.2956	.4636	.2355	.0895	3.00
	1.900	.66332	.22337	2.2746	.4544	.2201	.0830	2.78
	2.000	.66766	.22254	2.2552	.4459	.2063	.0771	2.59

Figure A2.1. Statistical areas for Cape Cod – Gulf of Maine yellowtail flounder.

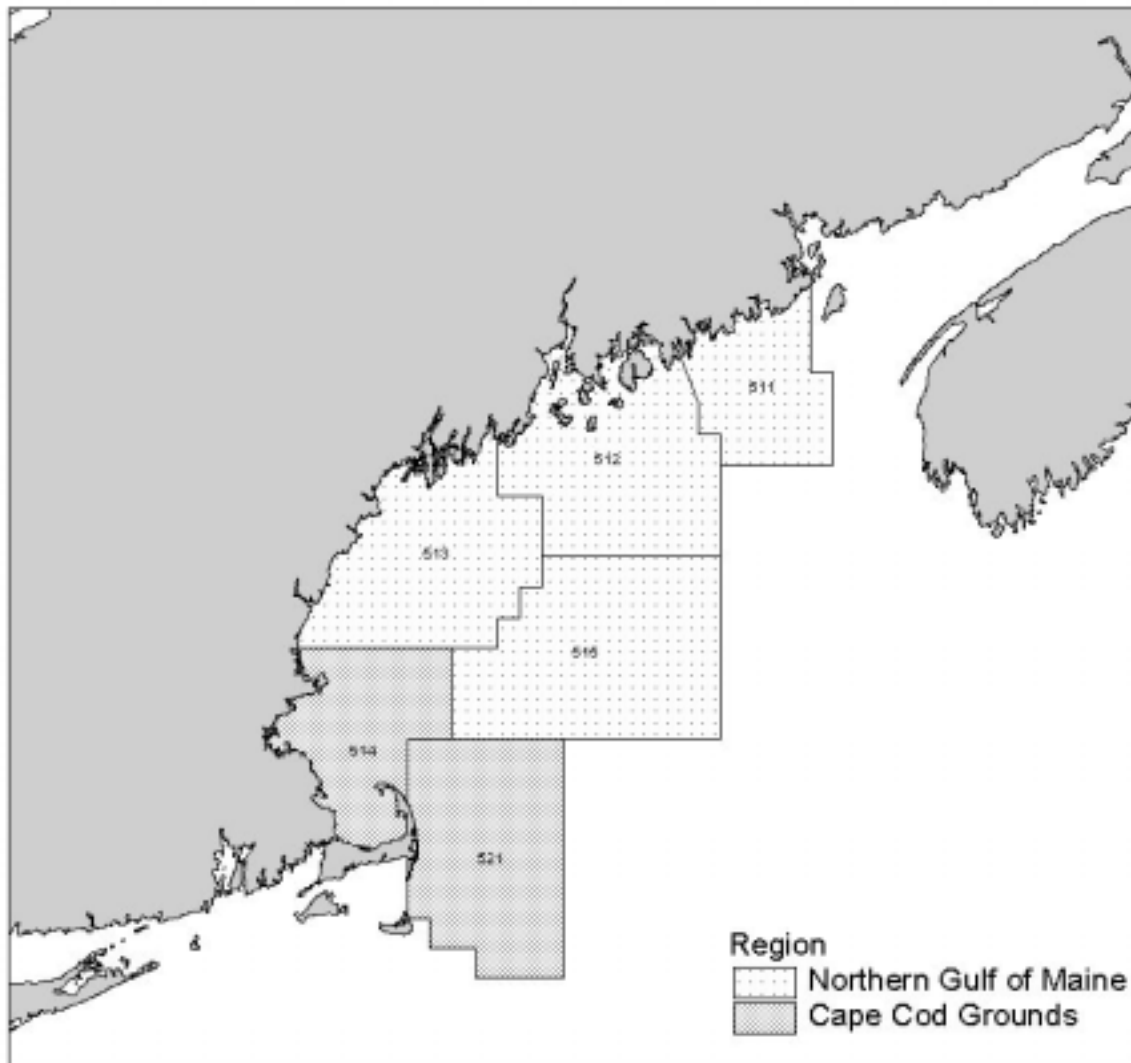


Figure A2.2. Cape Cod – Gulf of Maine yellowtail flounder catch.

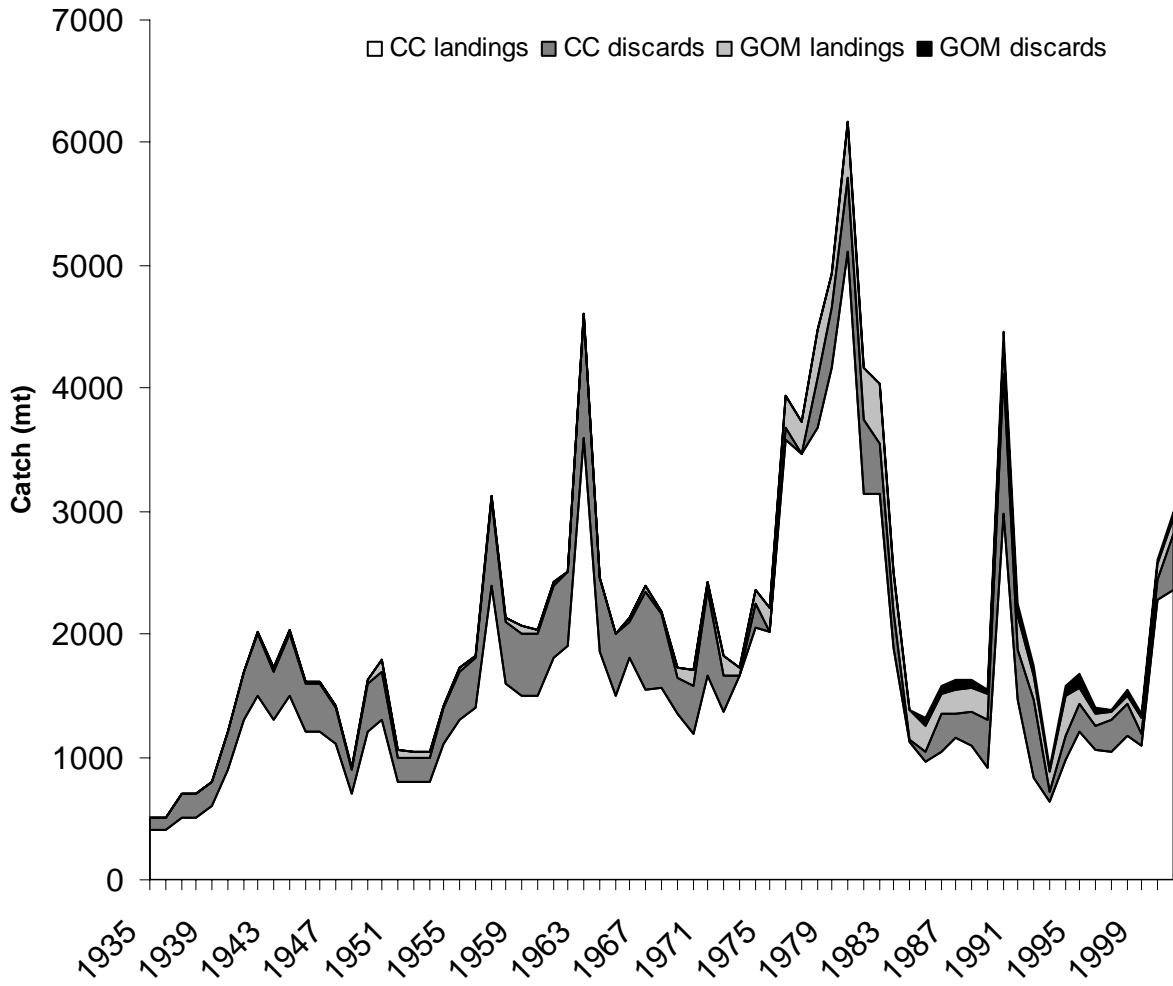


Figure A2.3. Total catch at age of Cape Cod – Gulf of Maine yellowtail flounder.

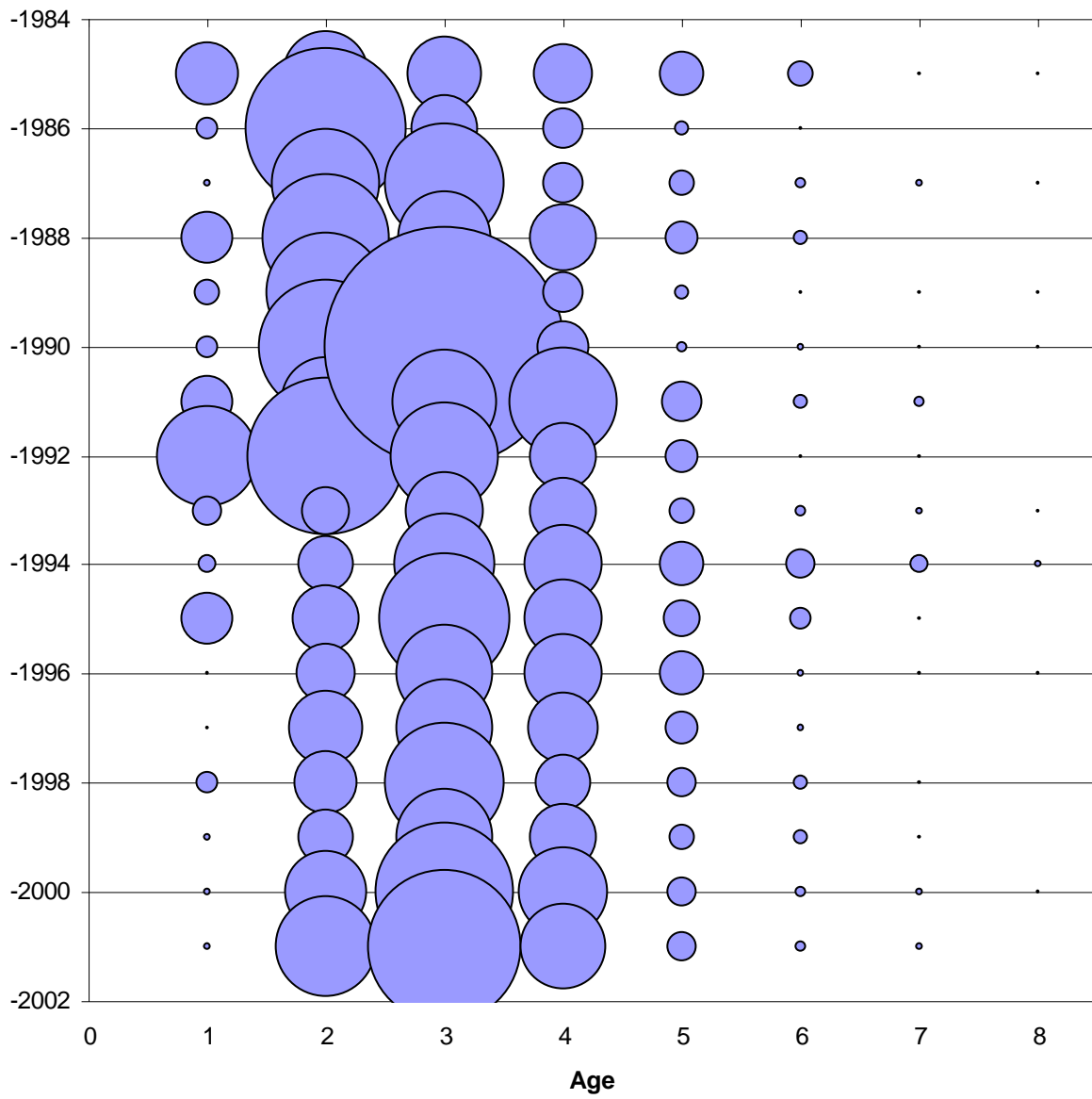


Figure A2.4. Mean weight at age of Cape Cod – Gulf of Maine yellowtail flounder catch.

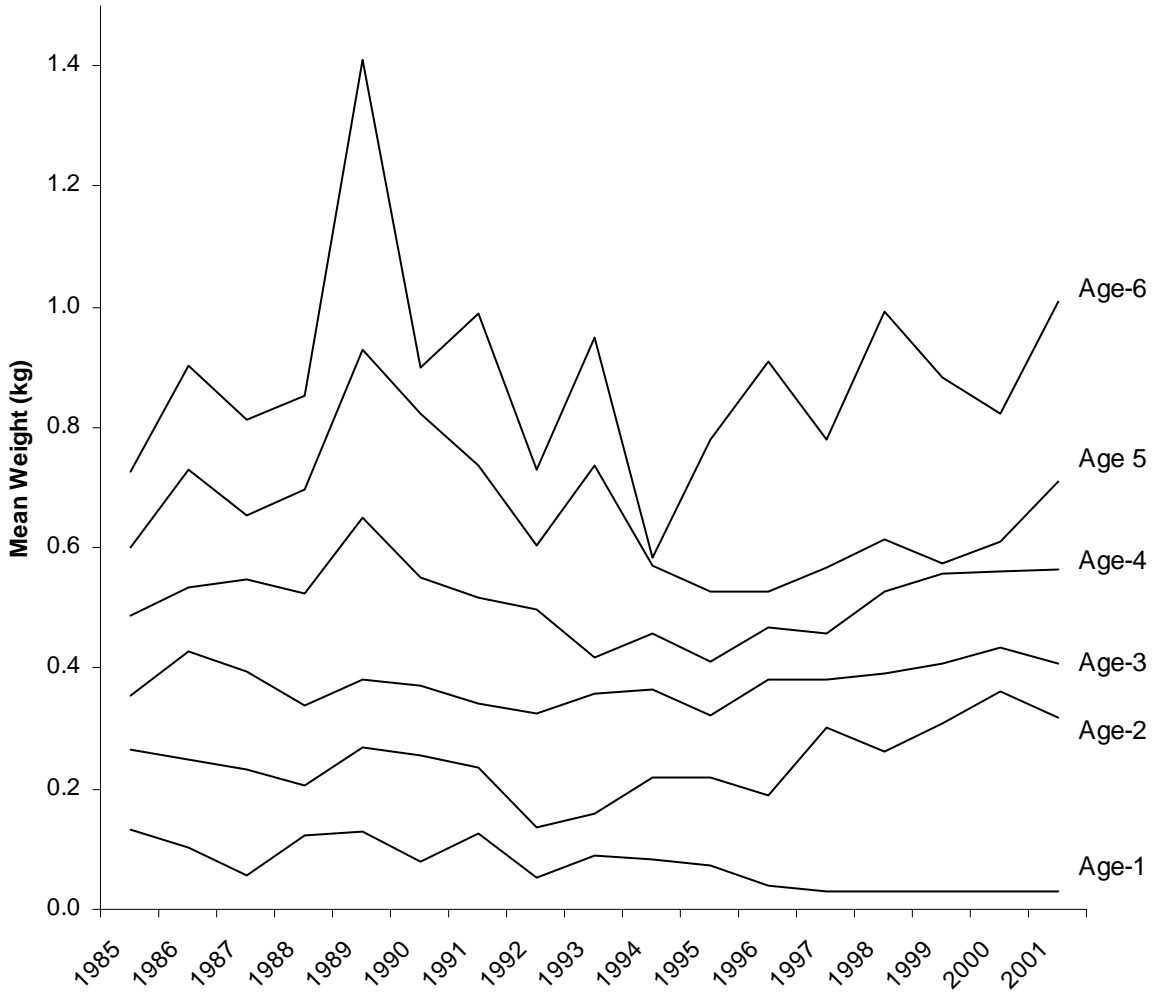


Figure A2.5. NEFSC survey strata used for Cape Cod – Gulf of Maine yellowtail flounder.

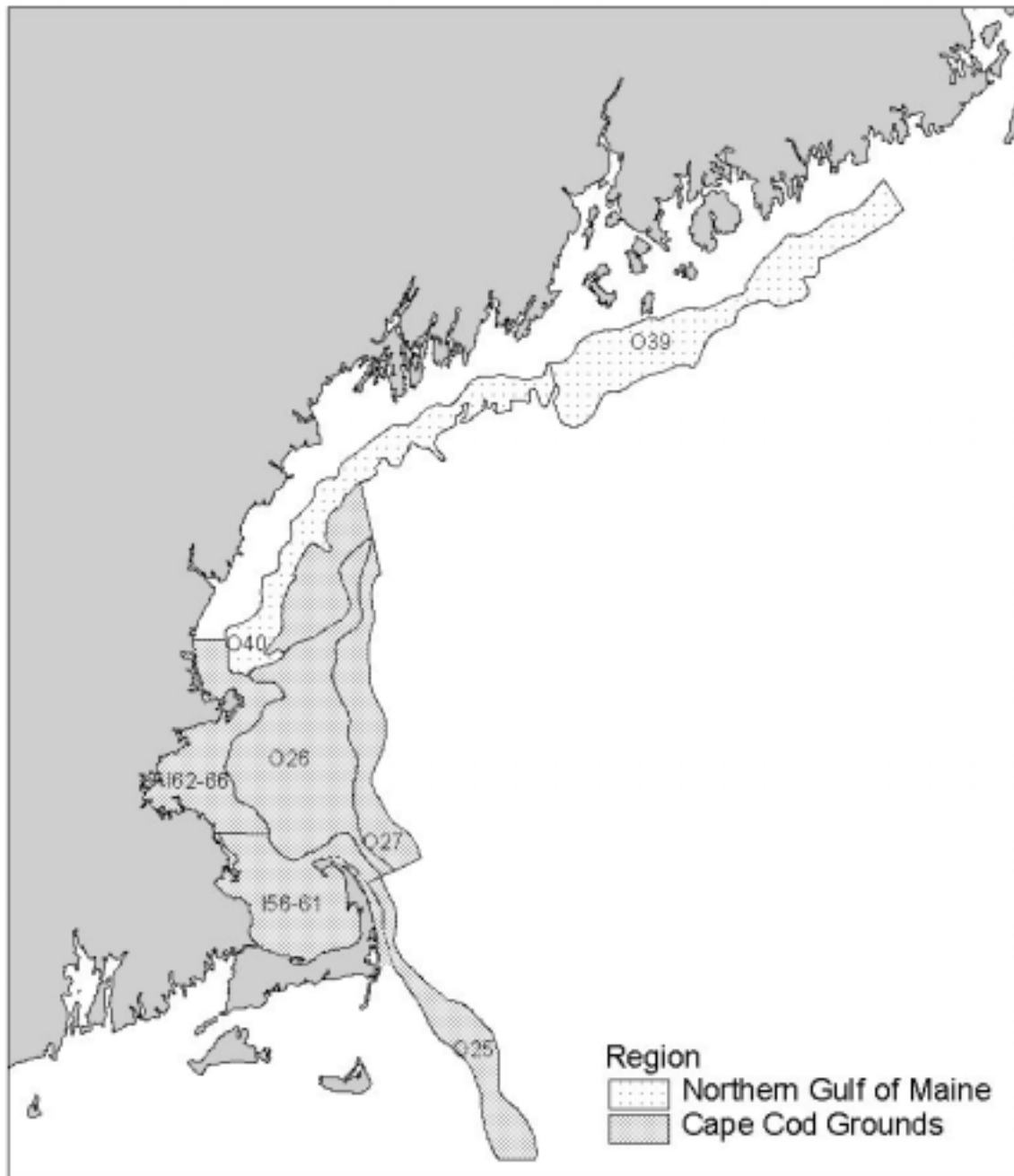




Figure A2.6a. Survey indices of Cape Cod – Gulf of Maine yellowtail flounder biomass.

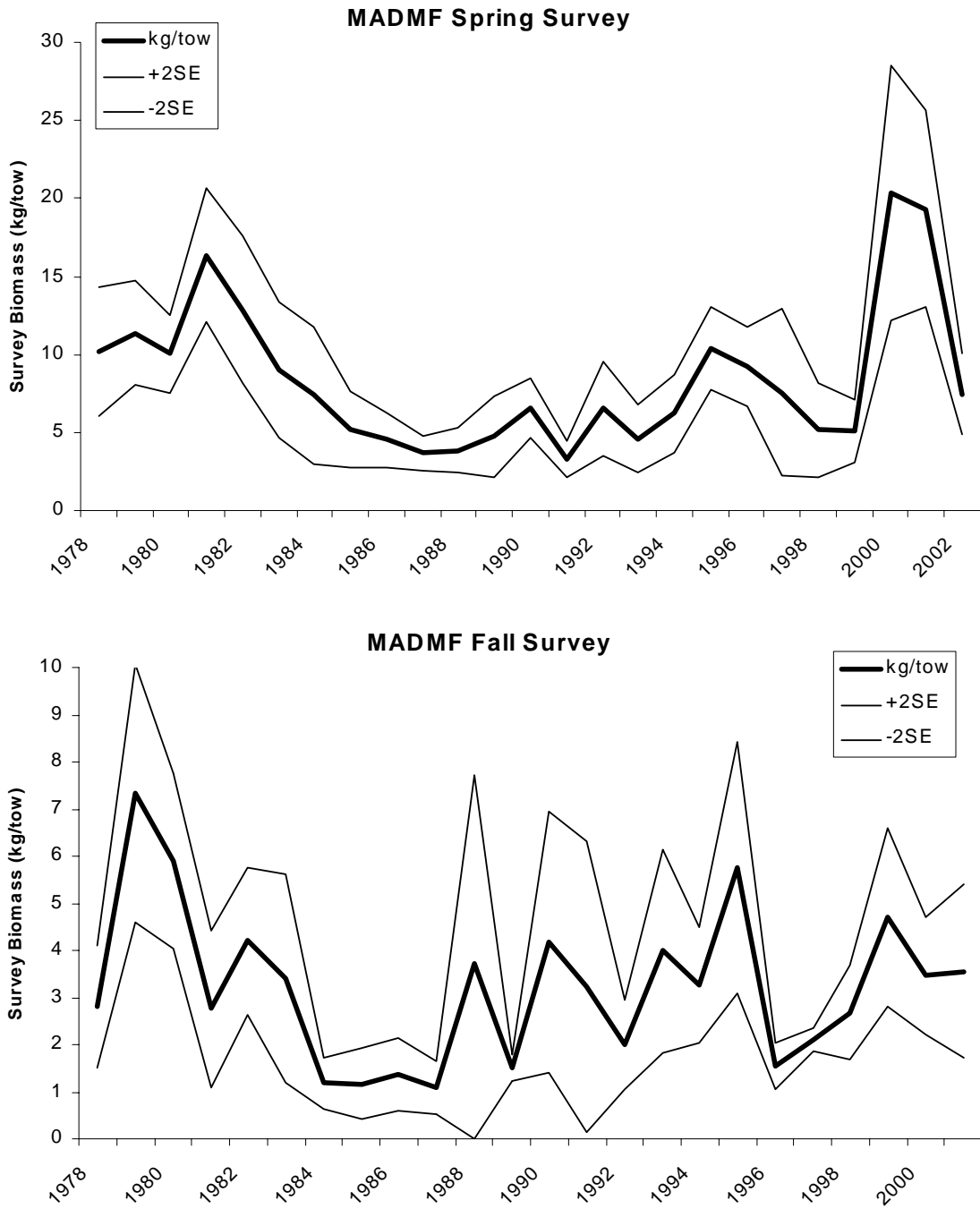


Figure A2.6b.

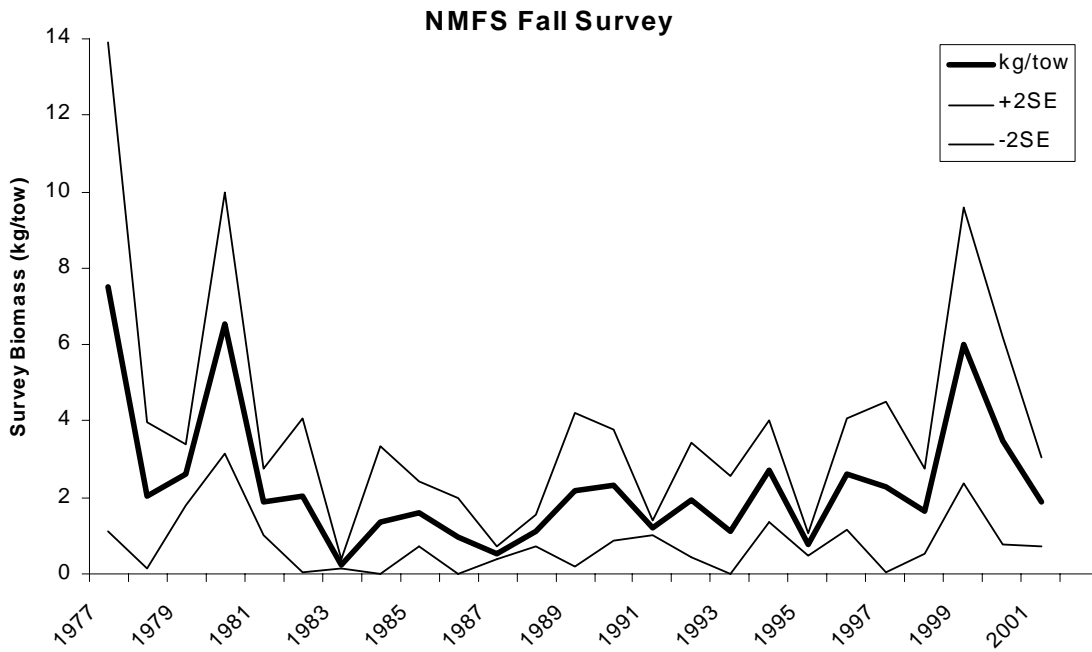
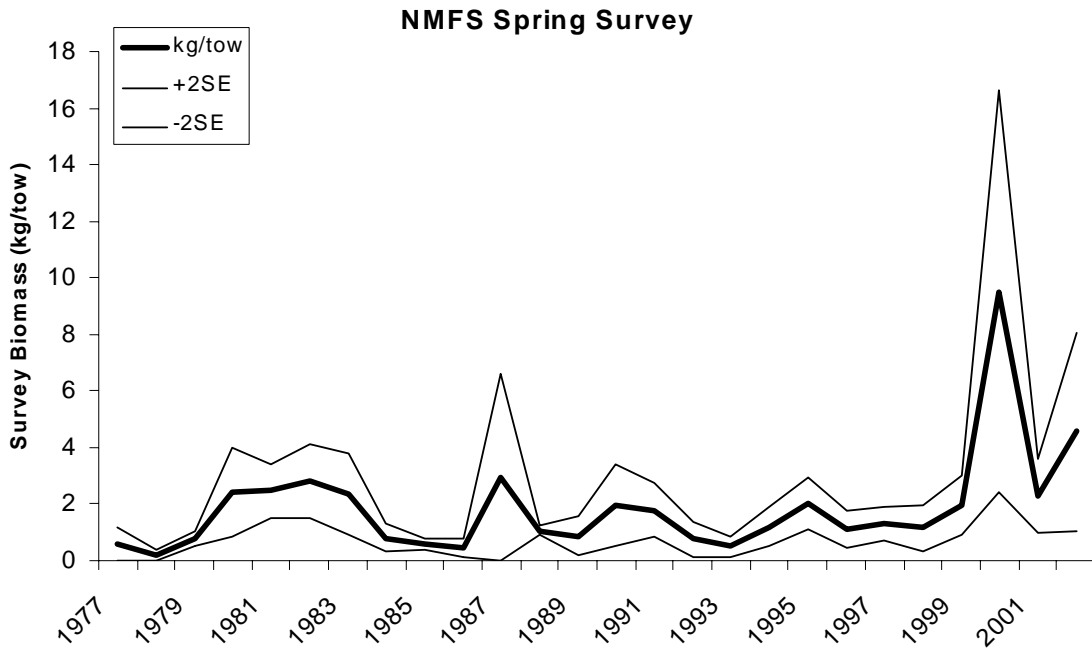


Figure A2.7a. Distribution of yellowtail flounder from recent surveys.

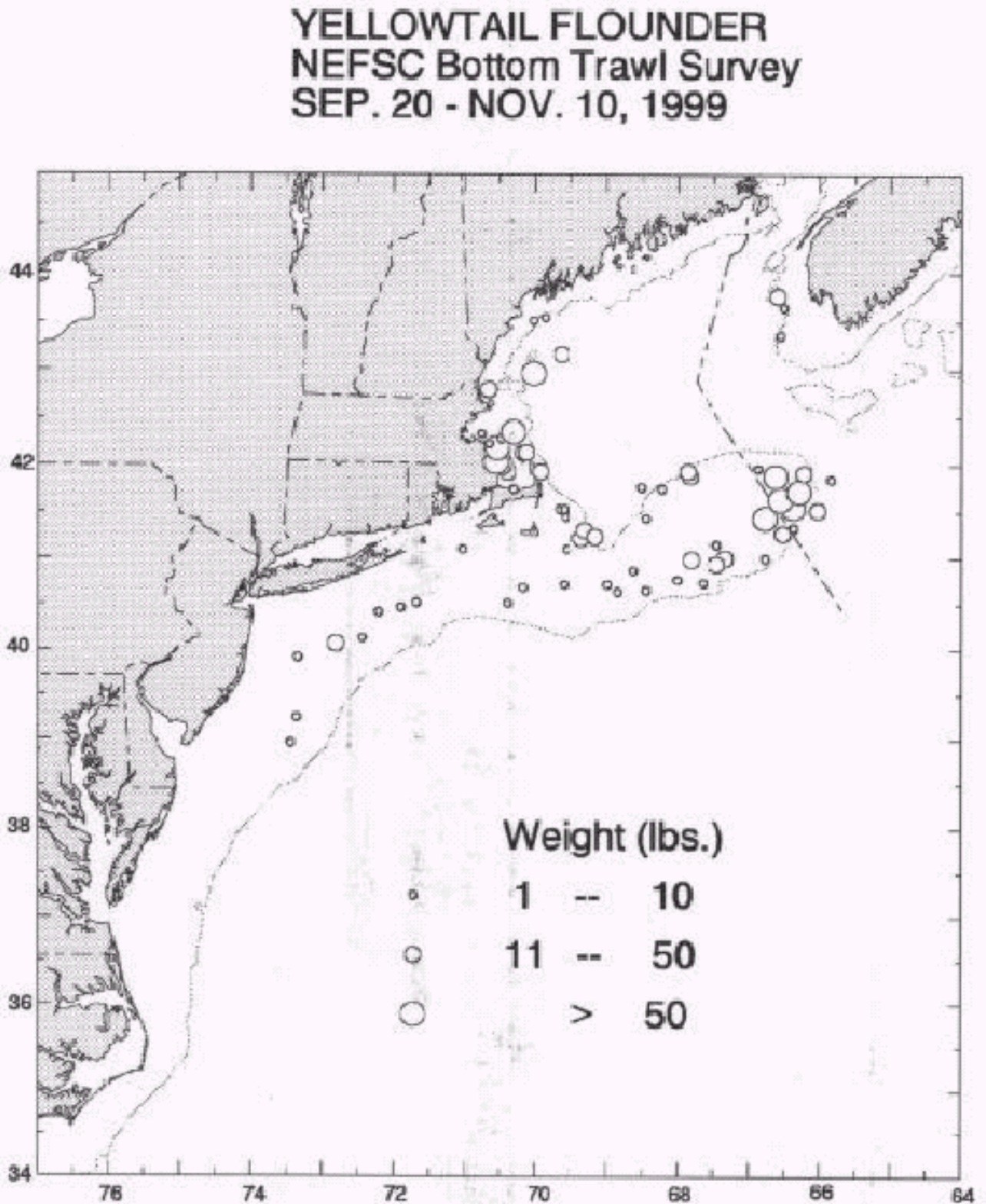


Figure A2.7b.

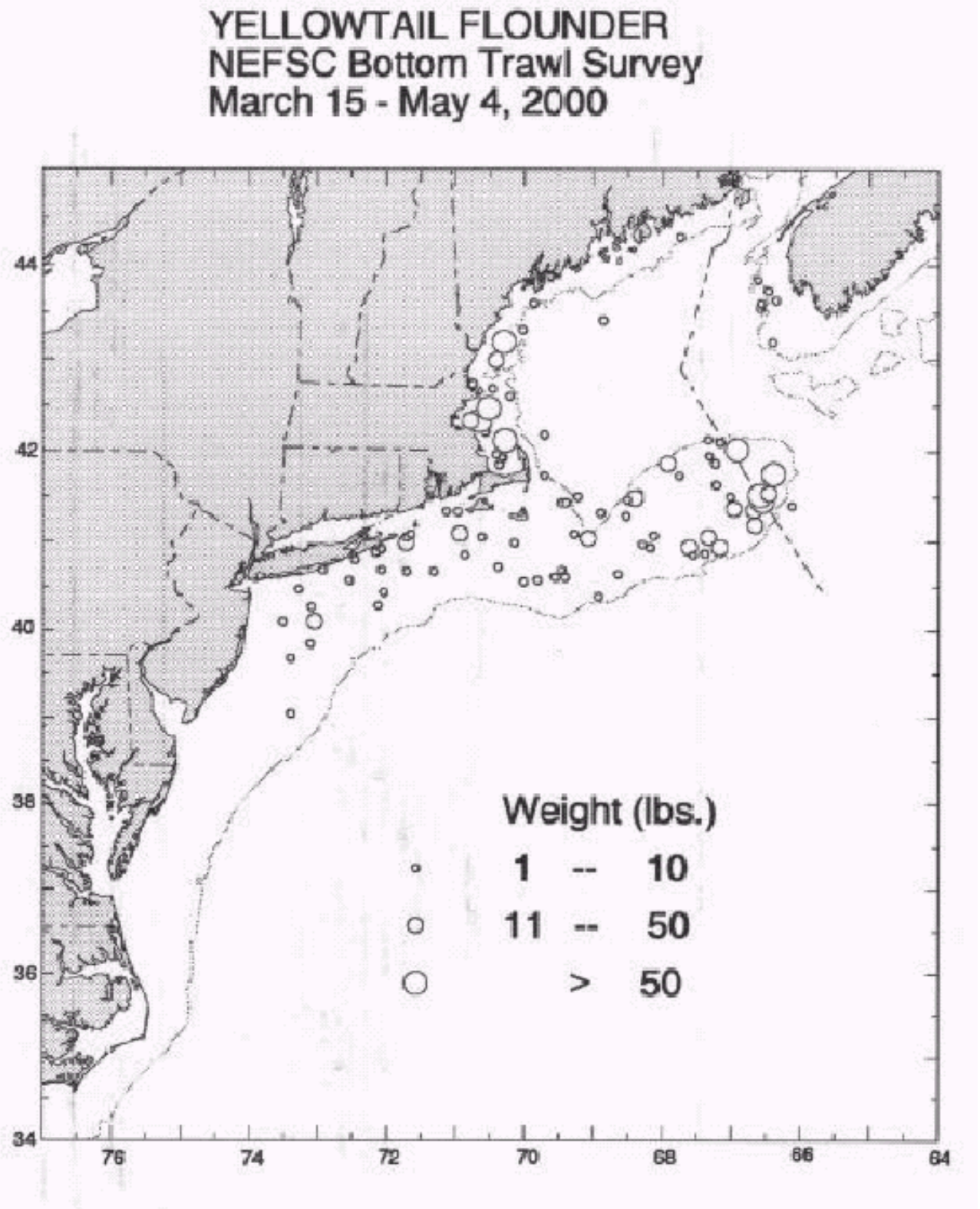


Figure A2.8. Geographic distribution of area-swept biomass of Cape Cod – Gulf of Maine yellowtail flounder from the NEFSC fall survey (offshore strata only).

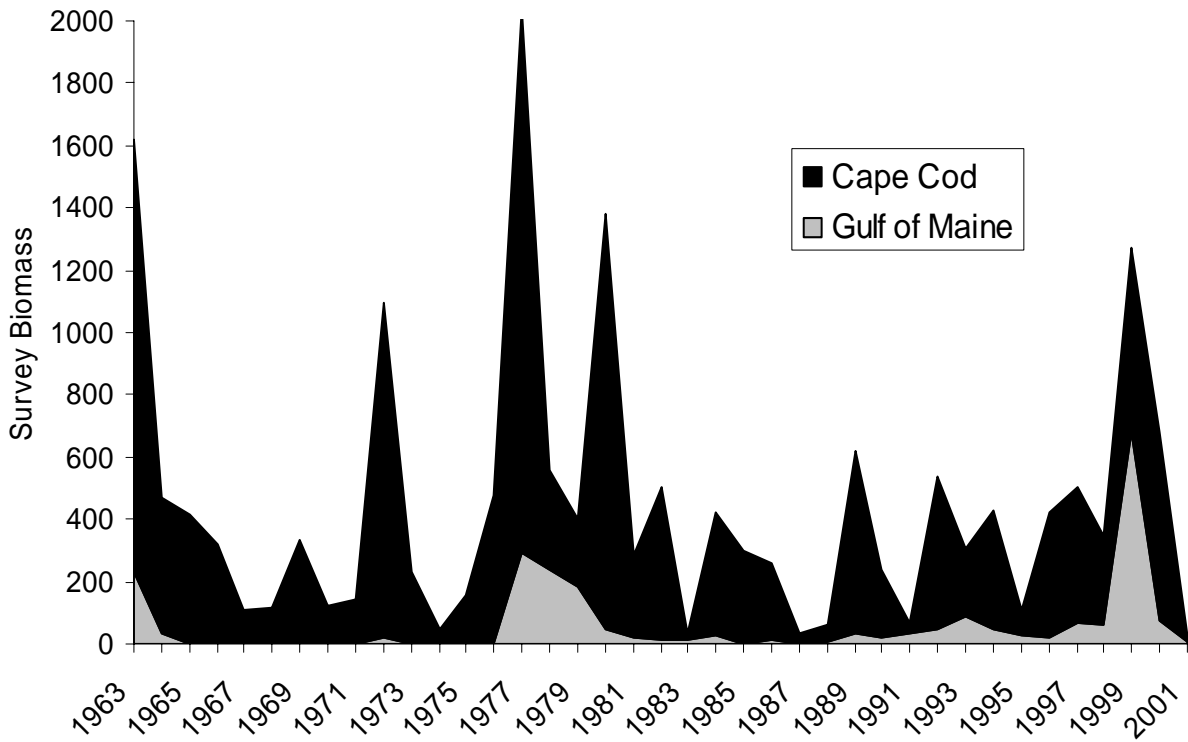


Figure A2.9a. Survey age distributions of Cape Cod – Gulf of Maine yellowtail flounder.

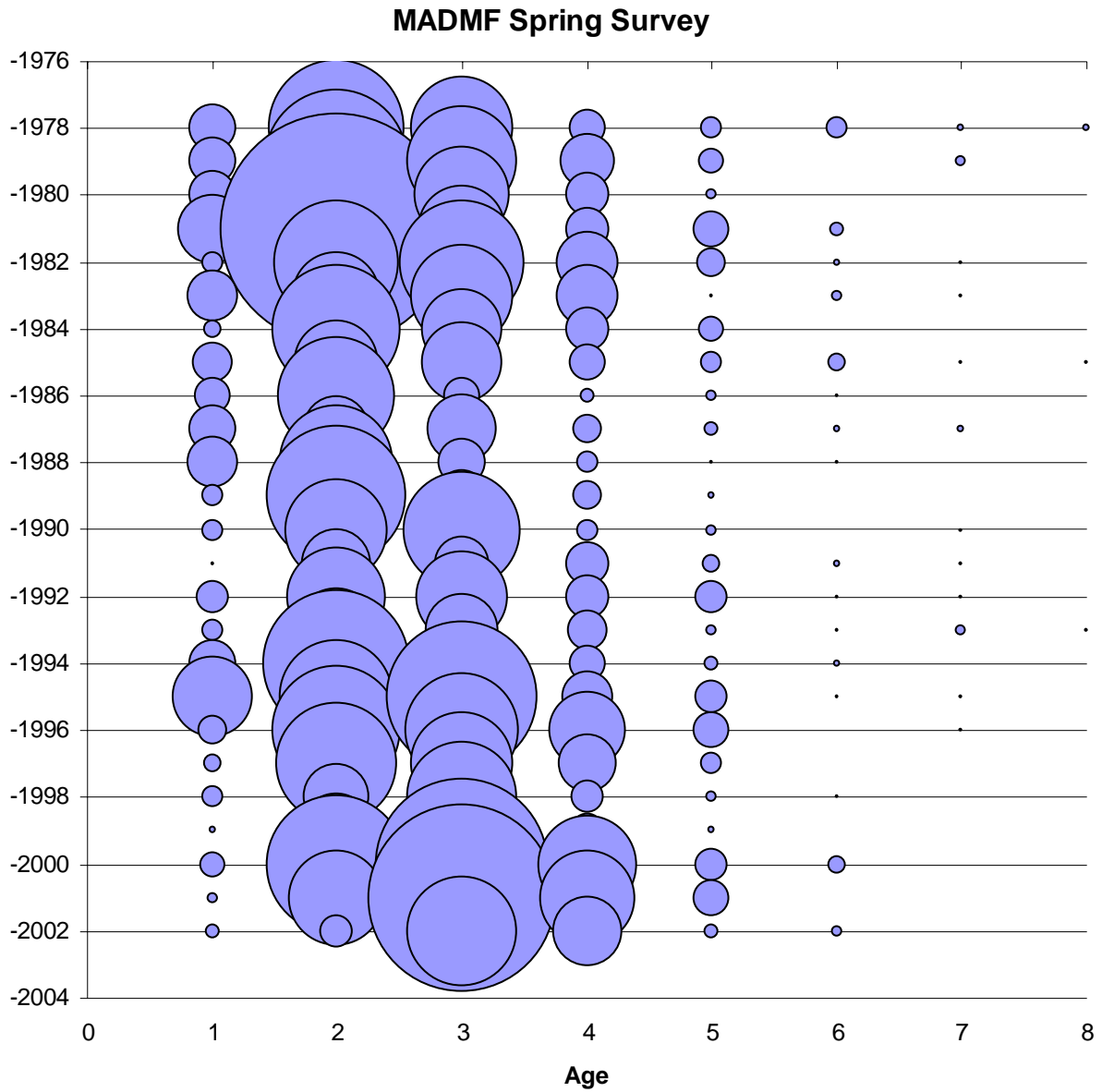


Figure A2.9b.

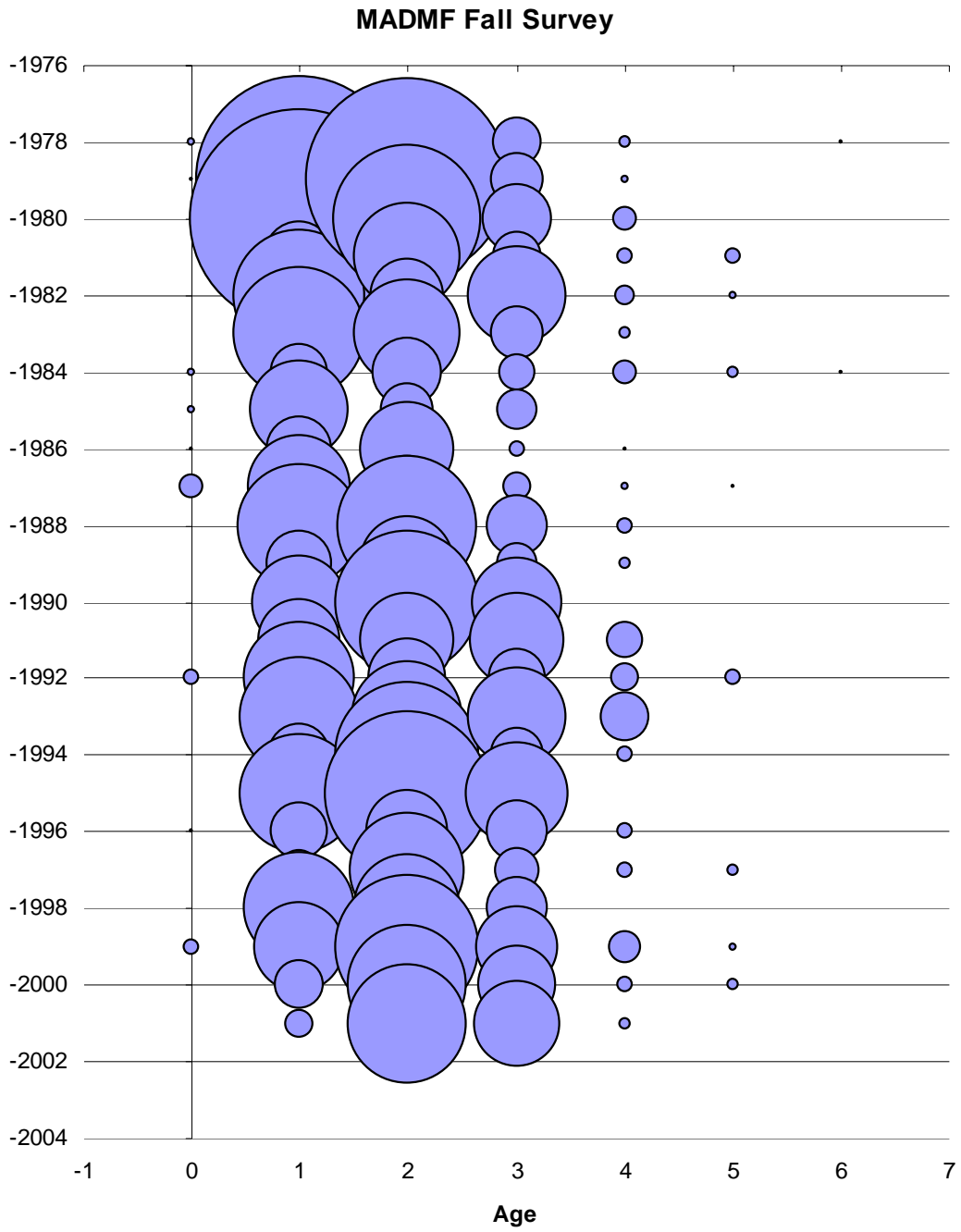


Figure A2.9c.

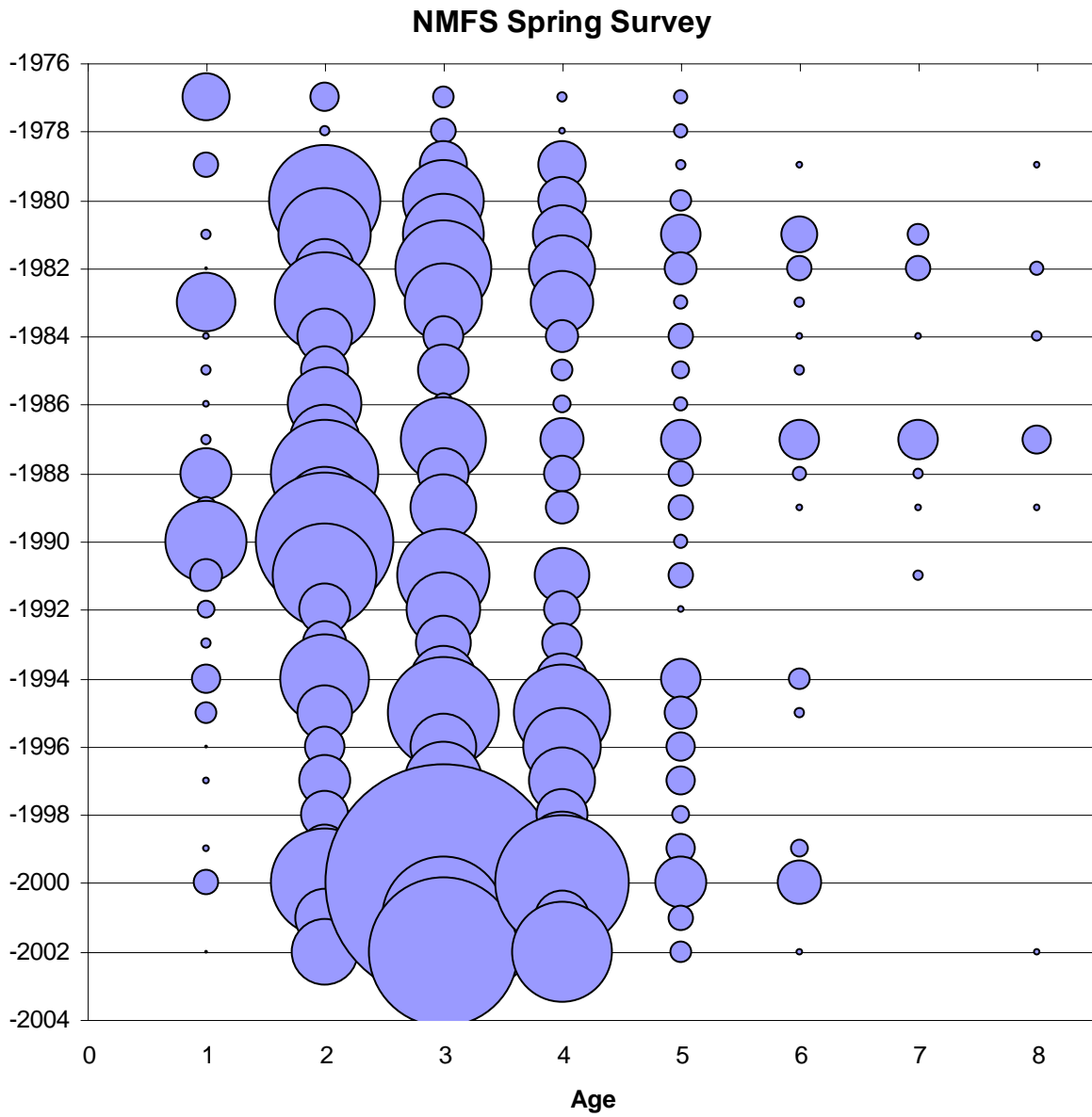




Figure A2.9d.

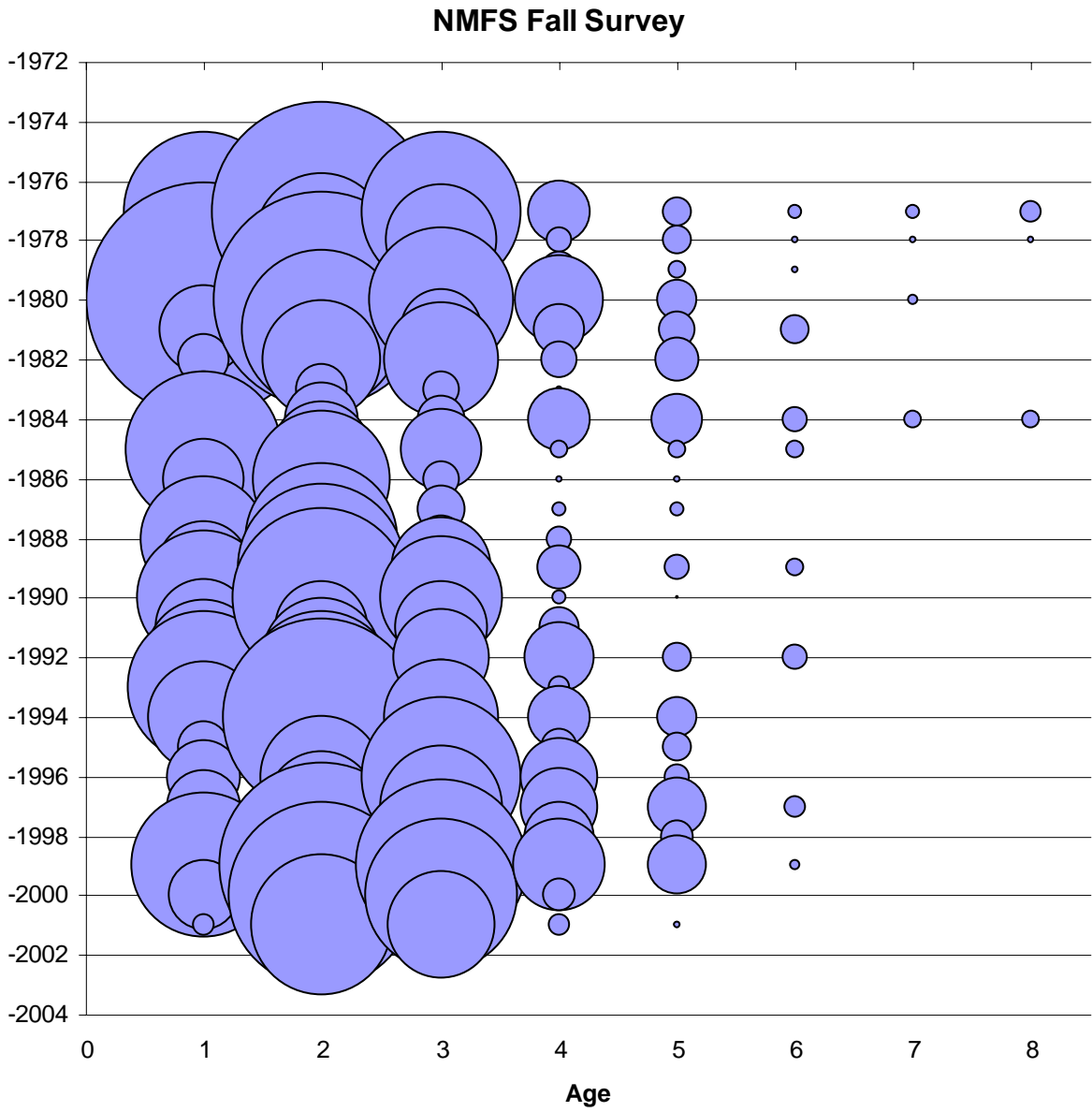


Figure A2.10. Normalized indices of abundance of Cape Cod – Gulf of Maine yellowtail flounder.

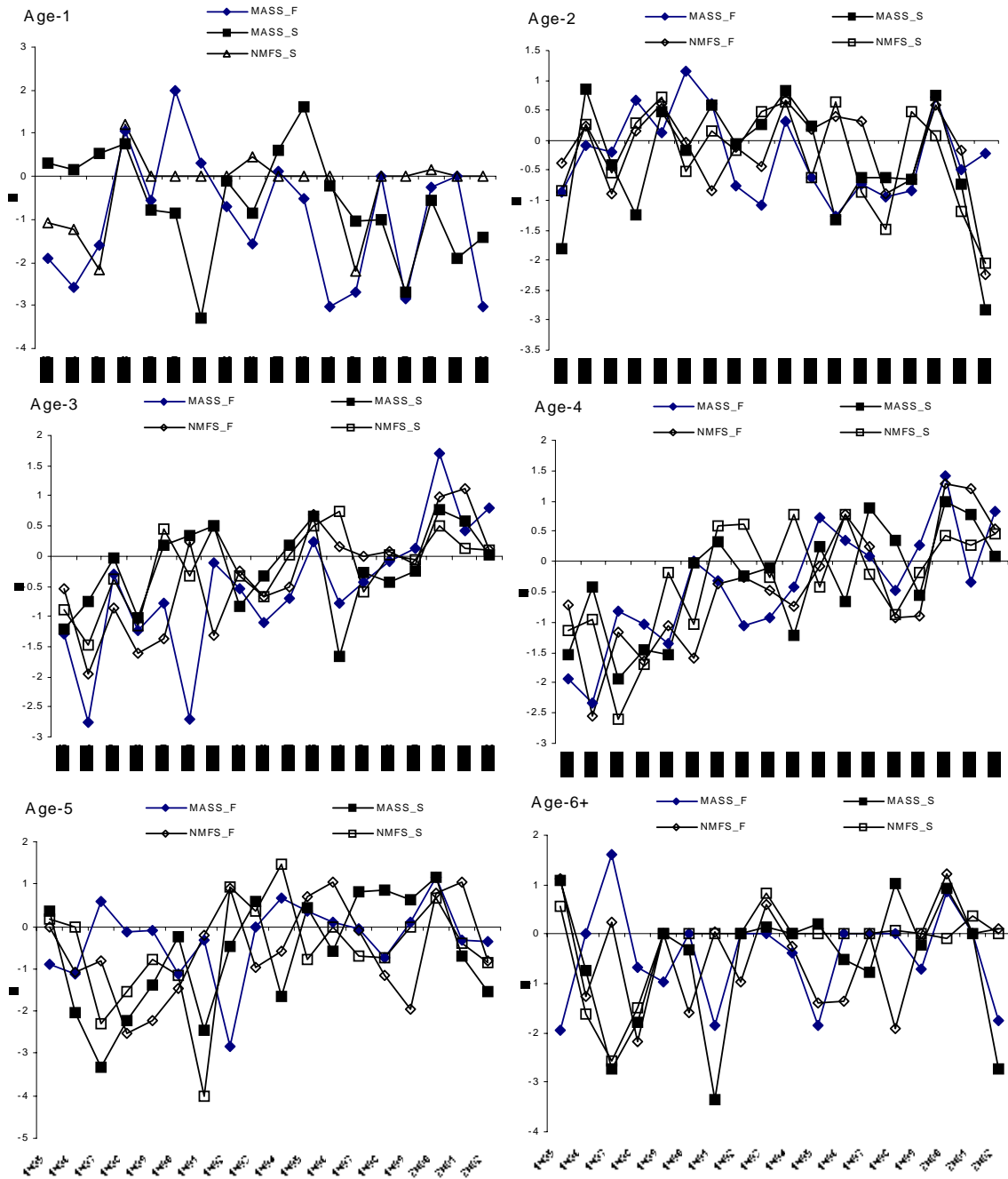


Figure A2.11. Residuals of the Cape Cod – Gulf of Maine yellowtail flounder ADAPT calibration.

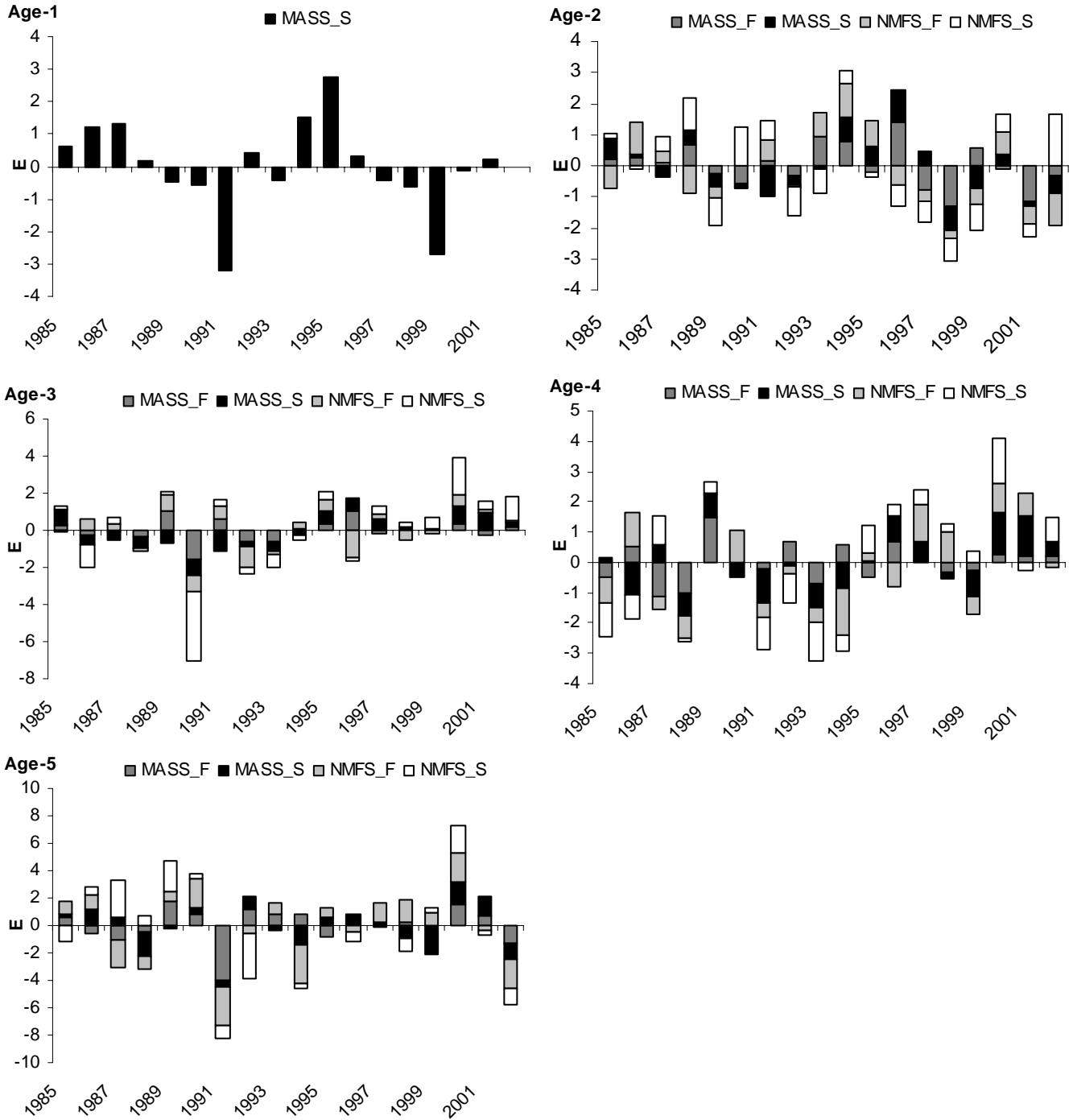


Figure A2.12. Results of the Cape Cod – Gulf of Maine VPA.

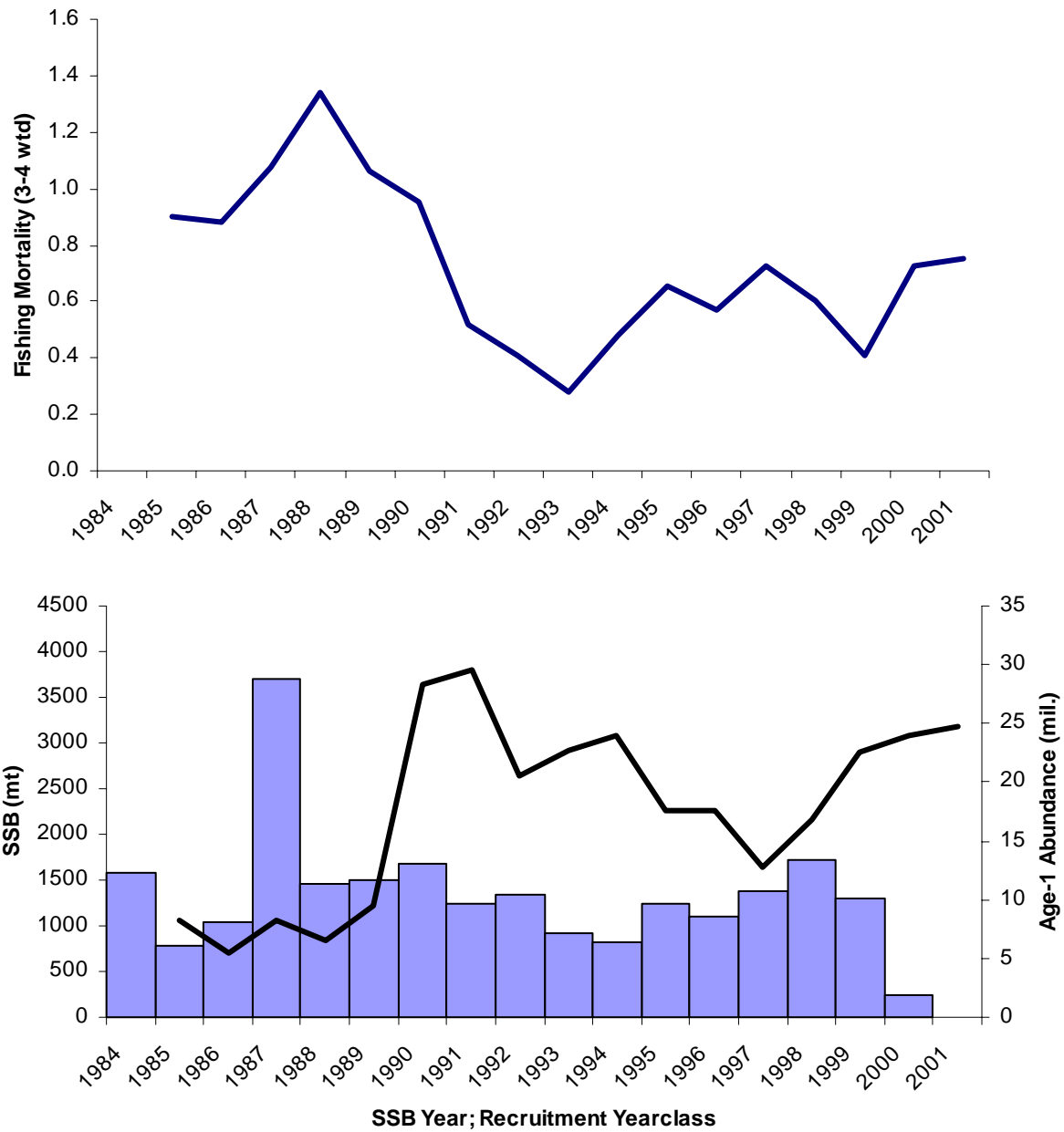


Figure A2.12b. Stock and recruitment of Cape Cod – Gulf of Maine yellowtail flounder (extreme points labeled by yearclass).

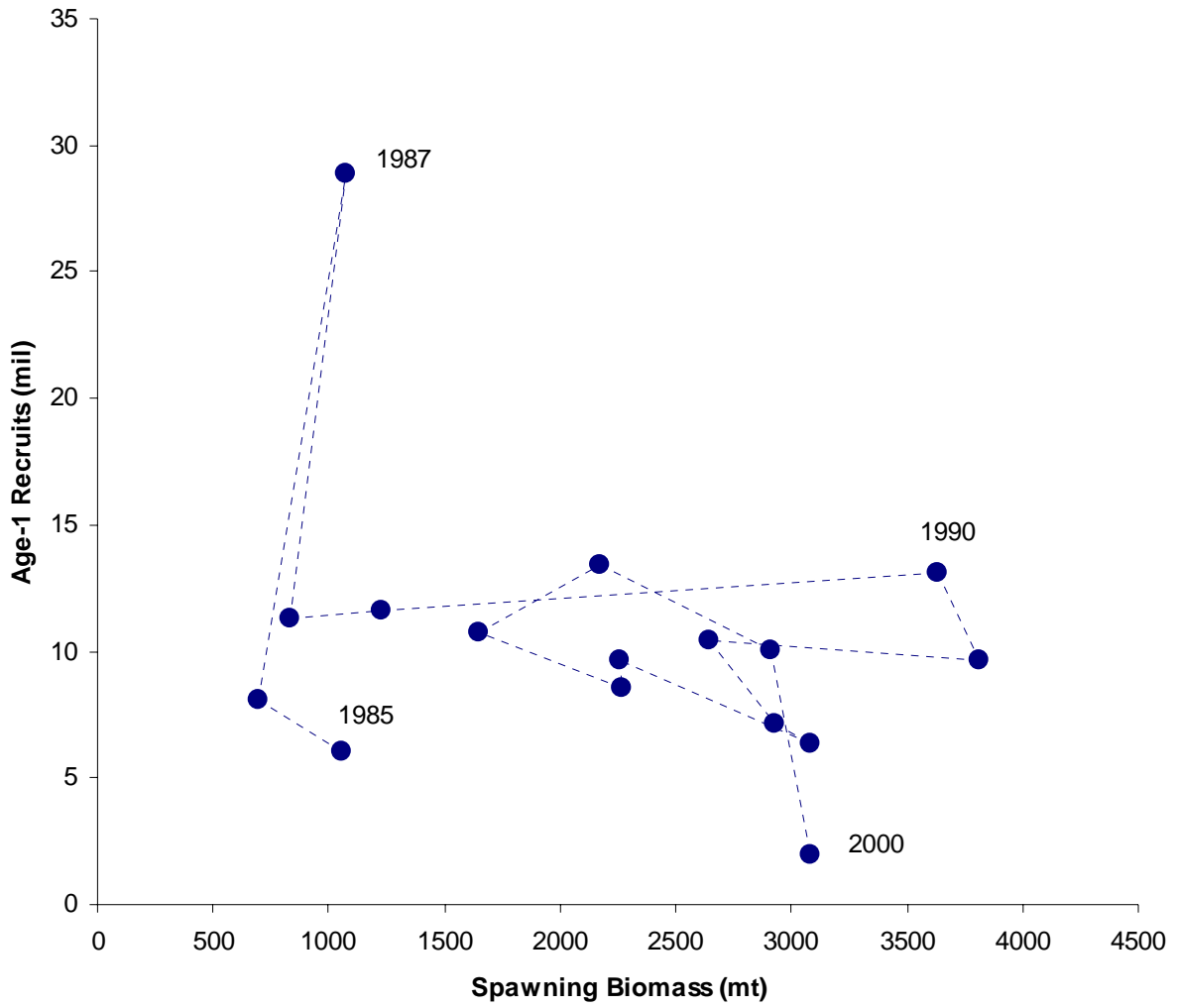


Figure A2.12c. Abundance at age of Cape Cod – Gulf of Maine yellowtail flounder.

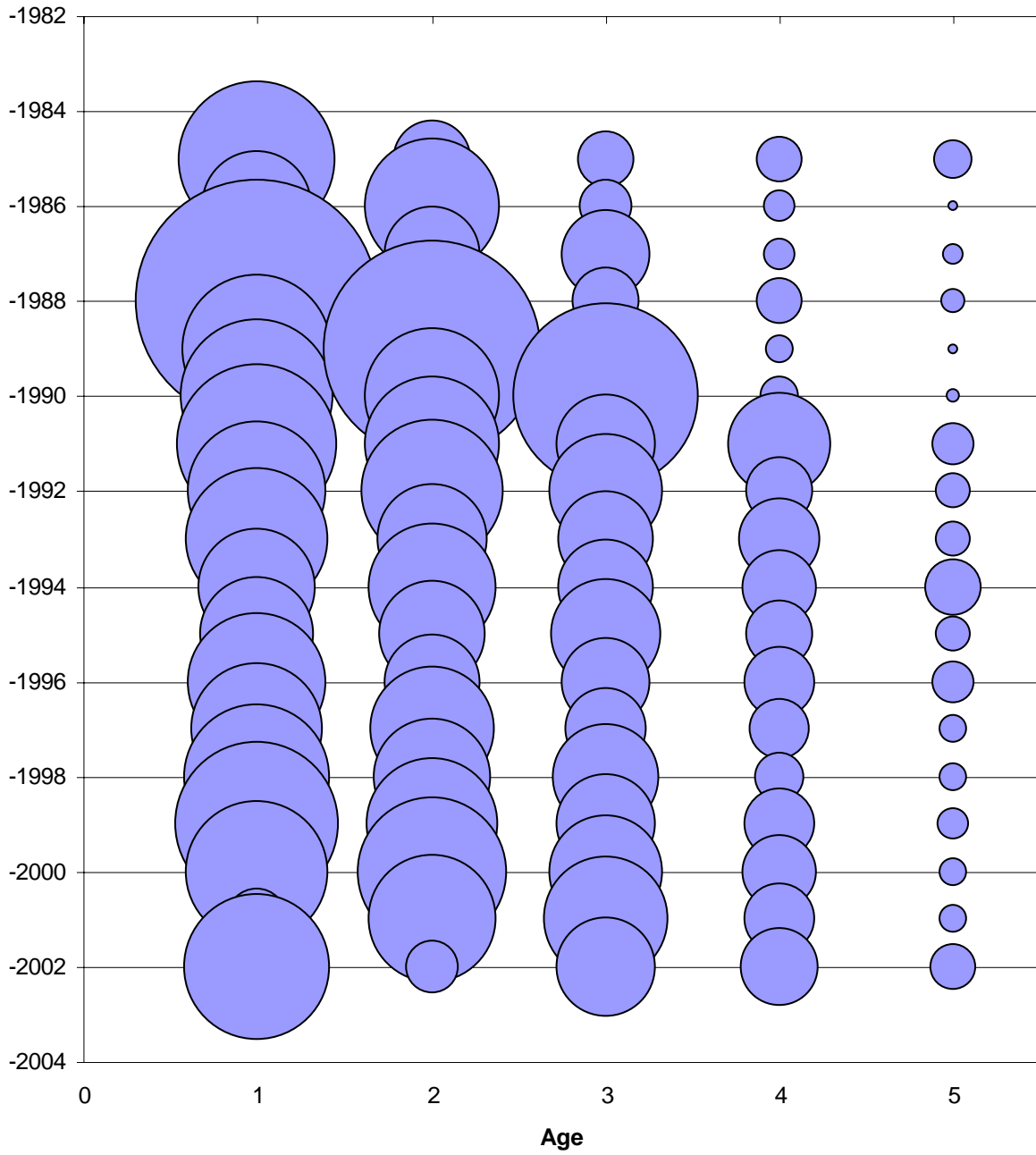


Figure A2.13. Retrospective analysis of the Cape Cod – Gulf of Maine yellowtail flounder VPA.

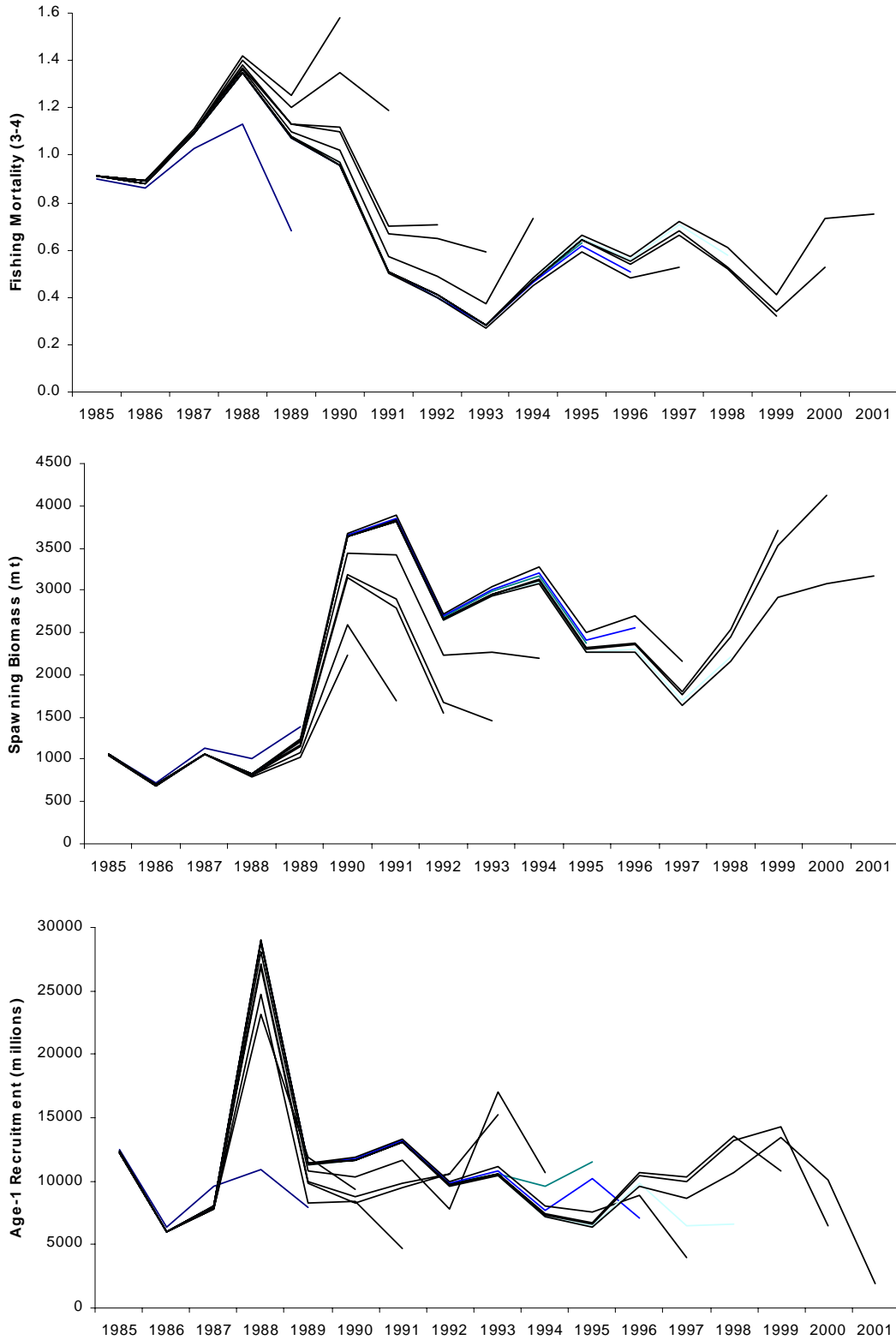


Figure A2.14. Yield and spawning biomass per recruit of Cape Cod – Gulf of Maine yellowtail flounder.

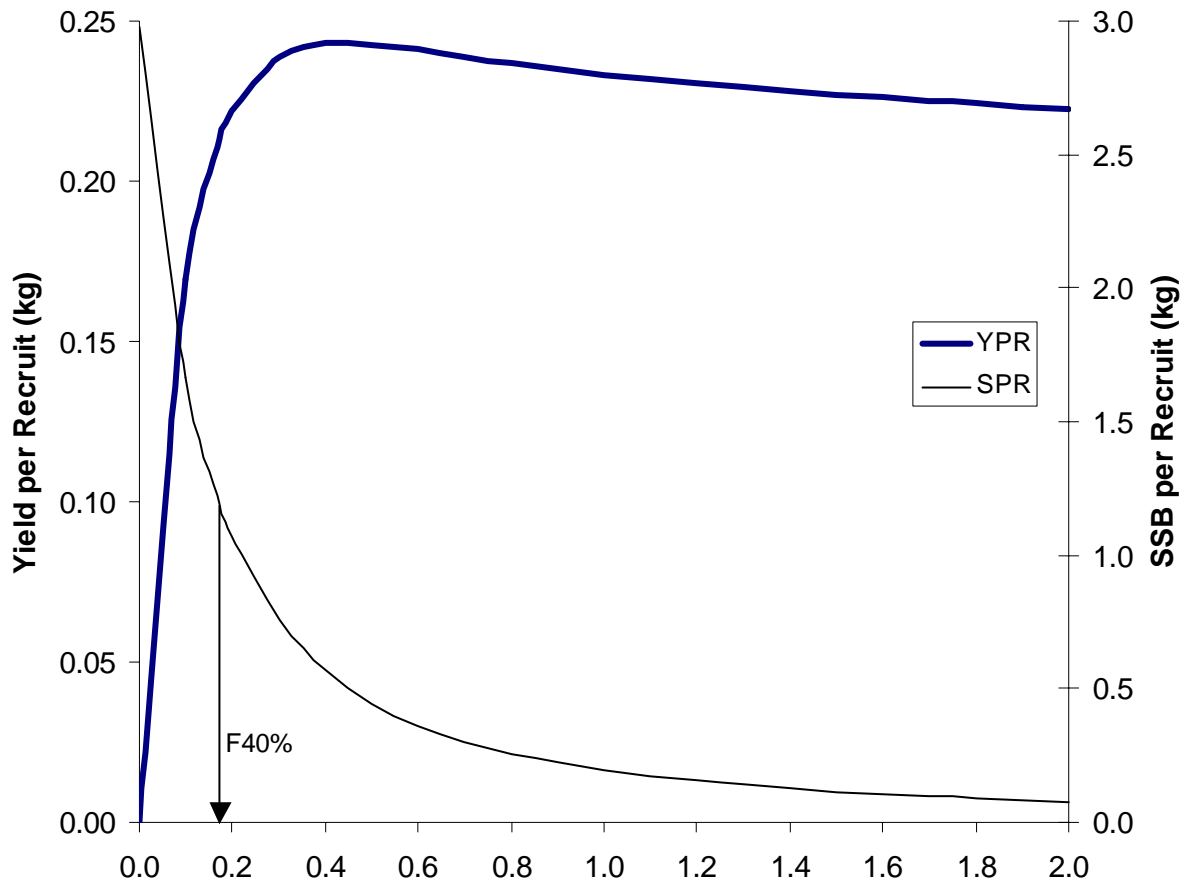




Figure A2.15. Observed and expected age distribution of spawning biomass at  $F_{40\%}$  for Cape Cod-Gulf of Maine yellowtail flounder.

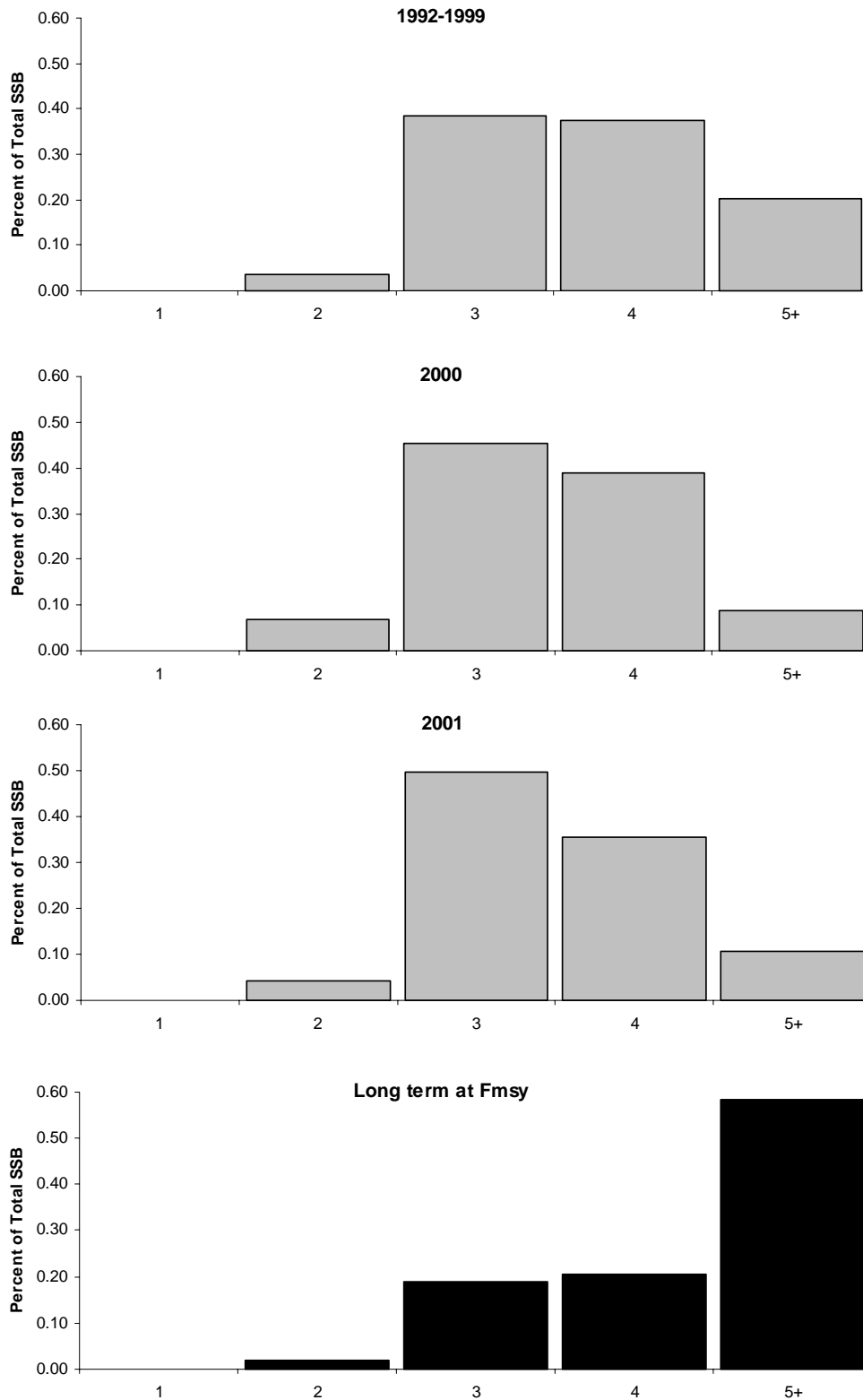


Figure A2.16. Stochastic projection of Cape Cod- Gulf of Maine yellowtail flounder spawning biomass (upper panel) and landings (lower panel) at 2002  $F = 0.64$  and 2003-2009  $F=0.03$ ; dotted lines indicate 90% confidence limits and the horizontal dashed line indicates  $SSB_{MSY}$ ).

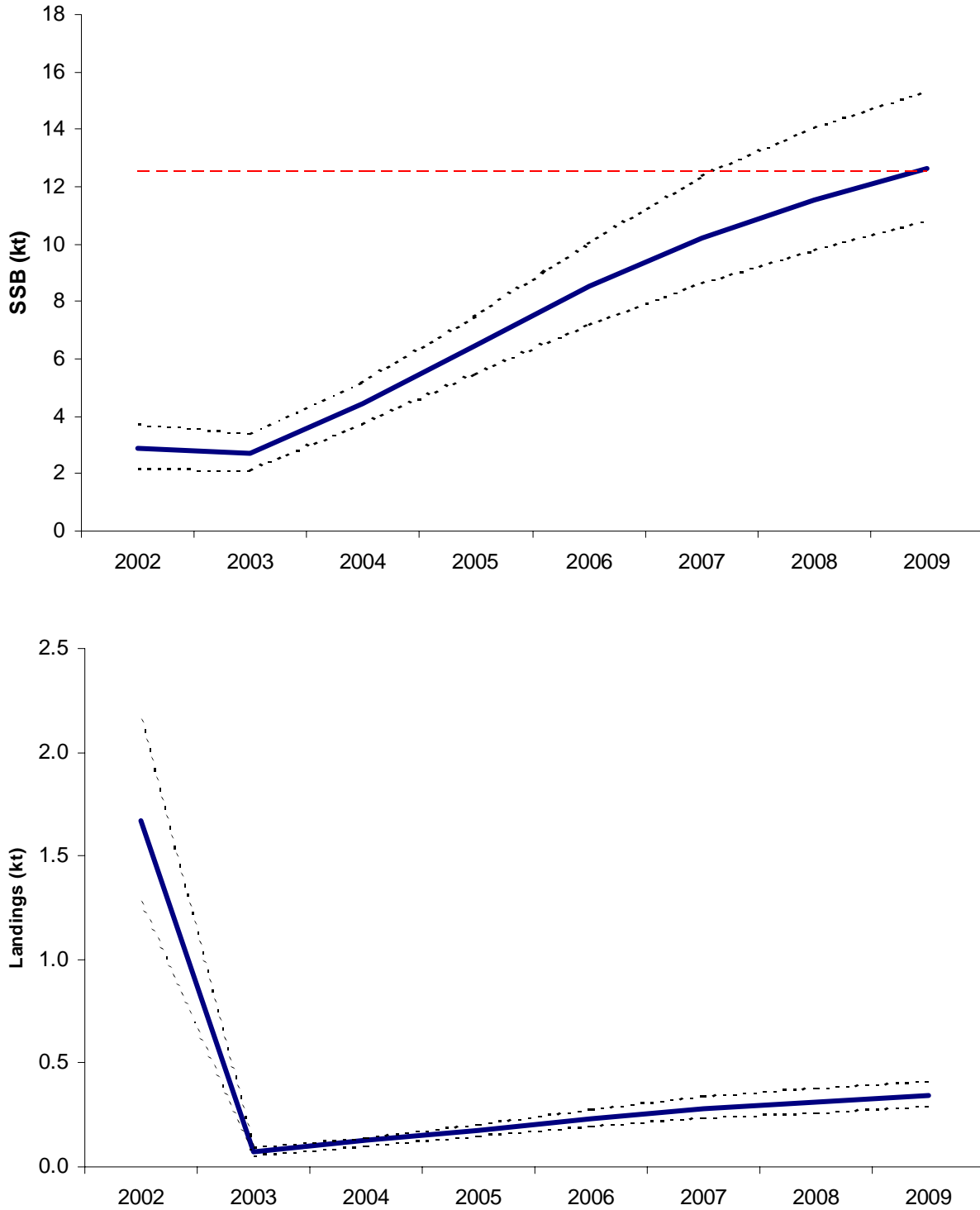


Figure A2.17. Length distribution of Cape Cod – Gulf of Maine yellowtail flounder by decade, from offshore survey strata 25, 27, 39 and 40.

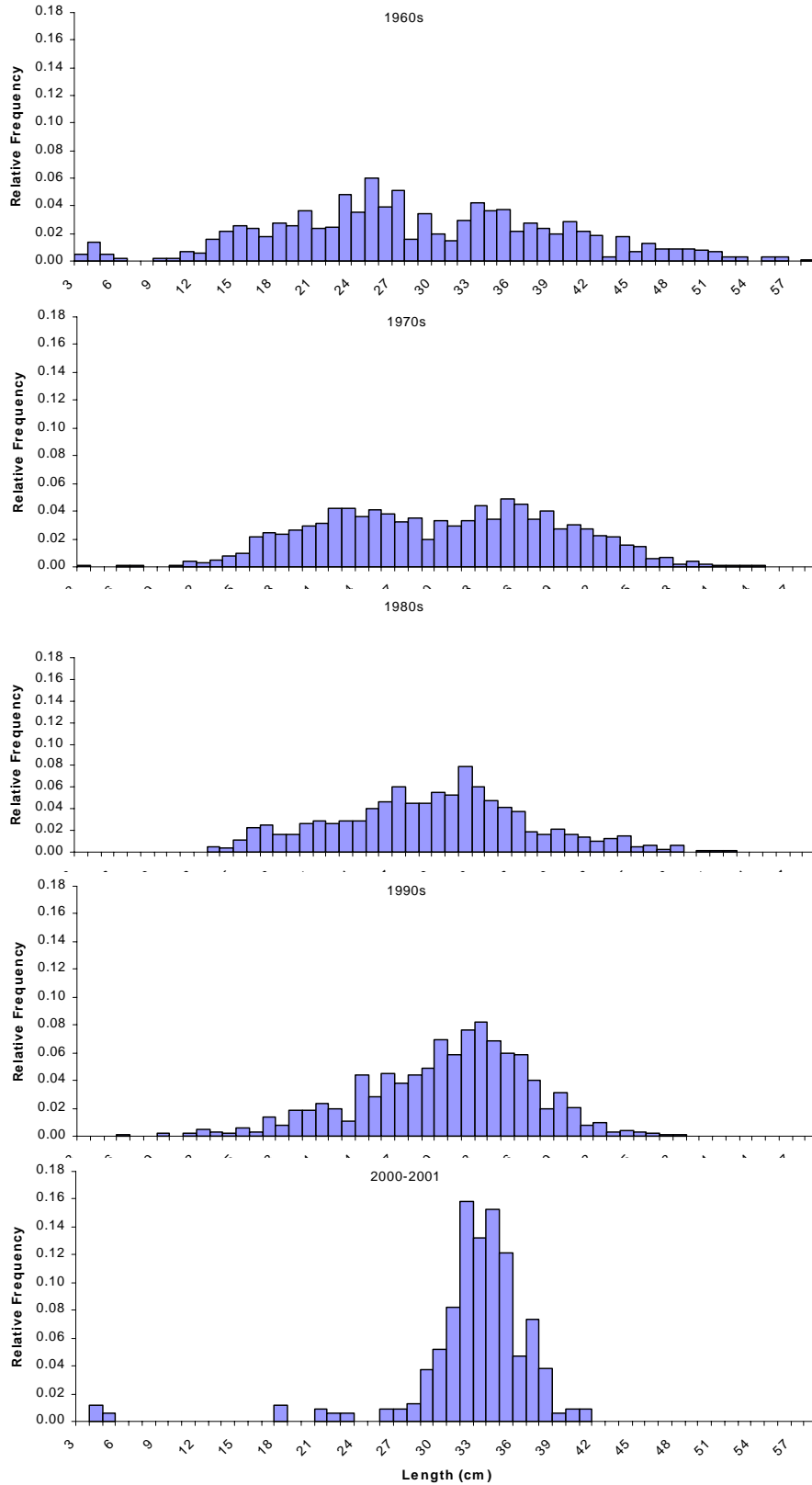


Figure A2.18a. Length distribution of Cape Cod – Gulf of Maine yellowtail flounder by decade, from the Massachusetts spring survey.

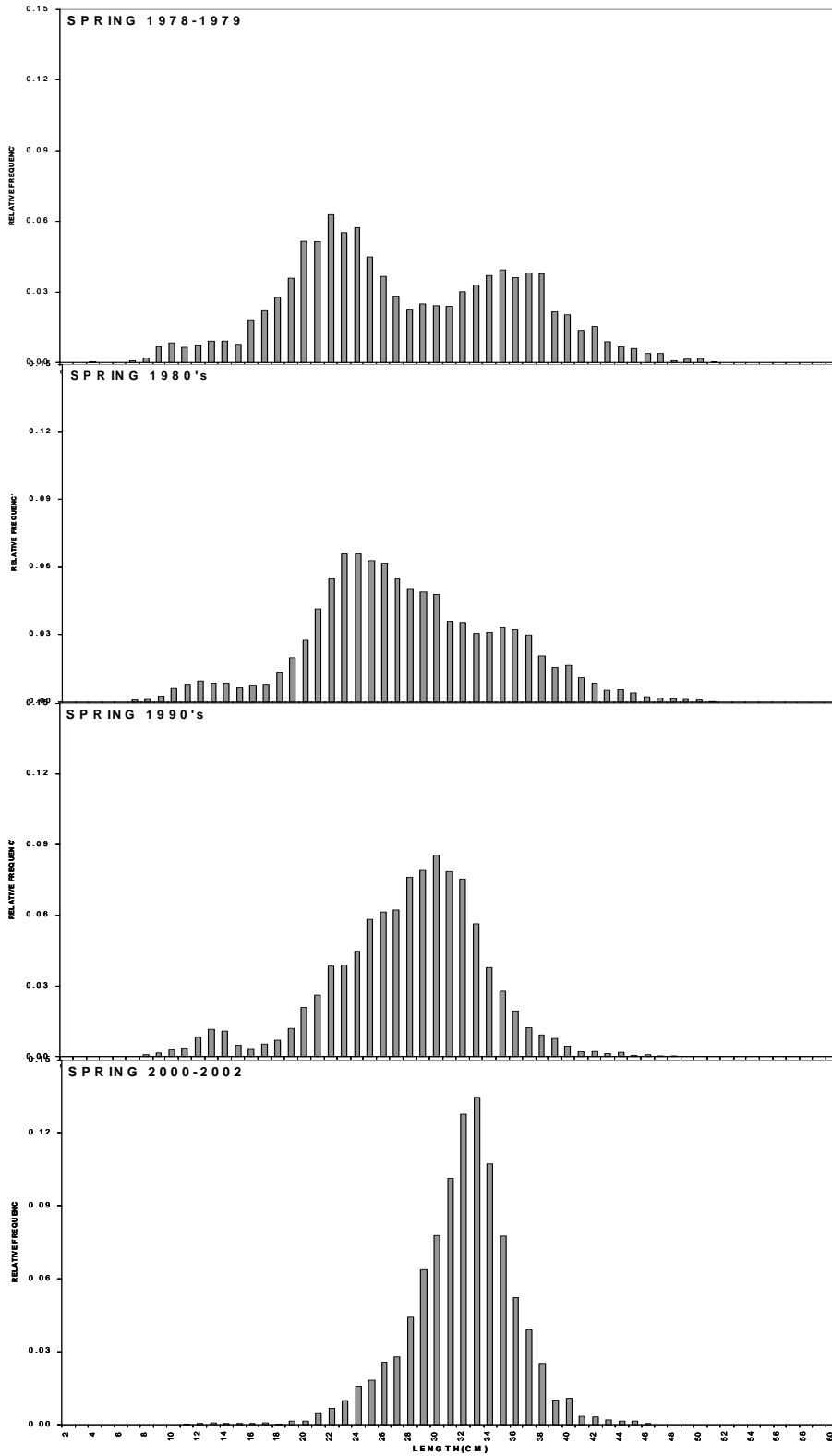


Figure A2.18b. Length distribution of Cape Cod – Gulf of Maine yellowtail flounder by decade, from the Massachusetts fall survey.

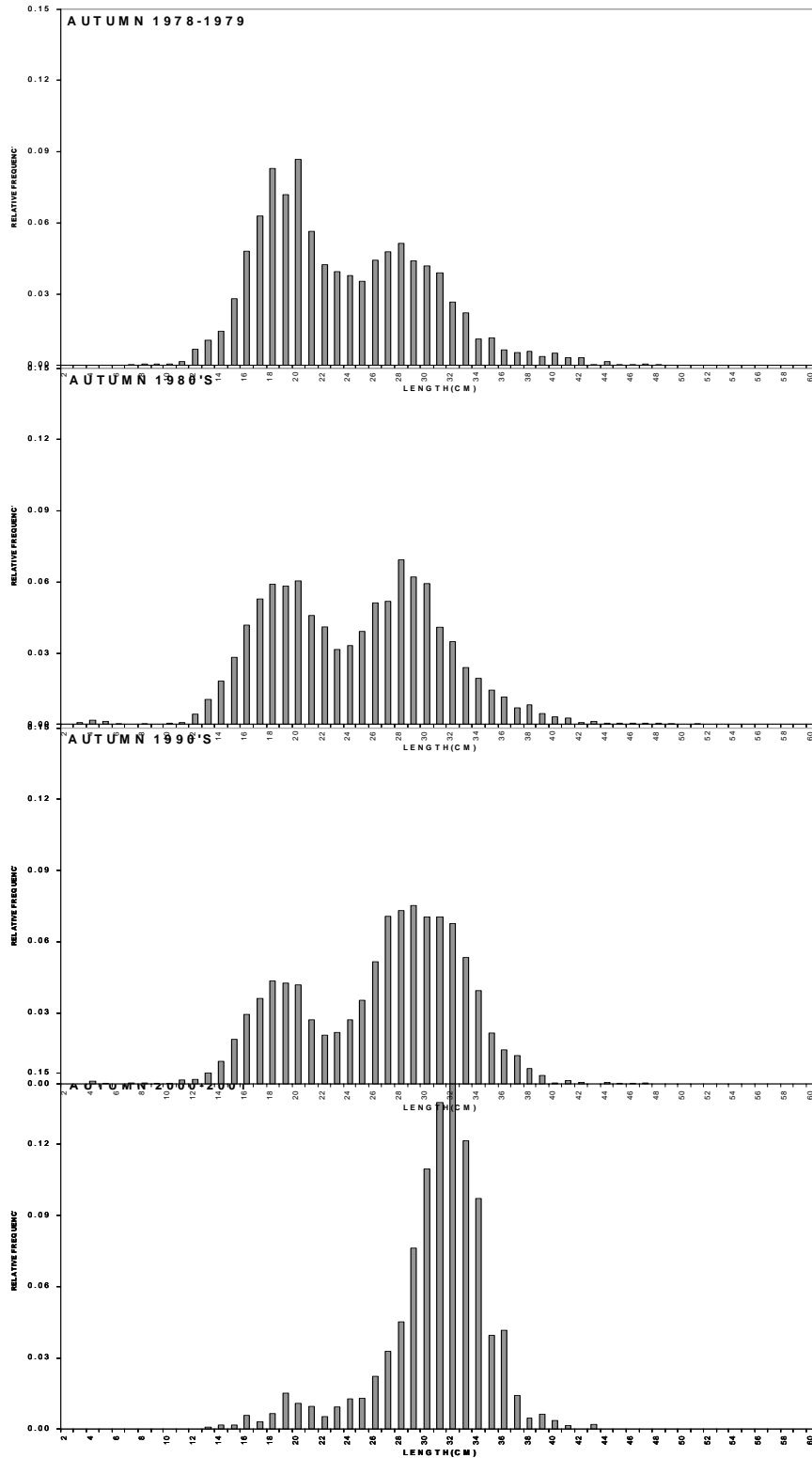


Figure A2.19. Size distribution of yellowtail flounder sampled from the inshore Gulf of Maine (NEFSC summer surveys, 1978-1981).

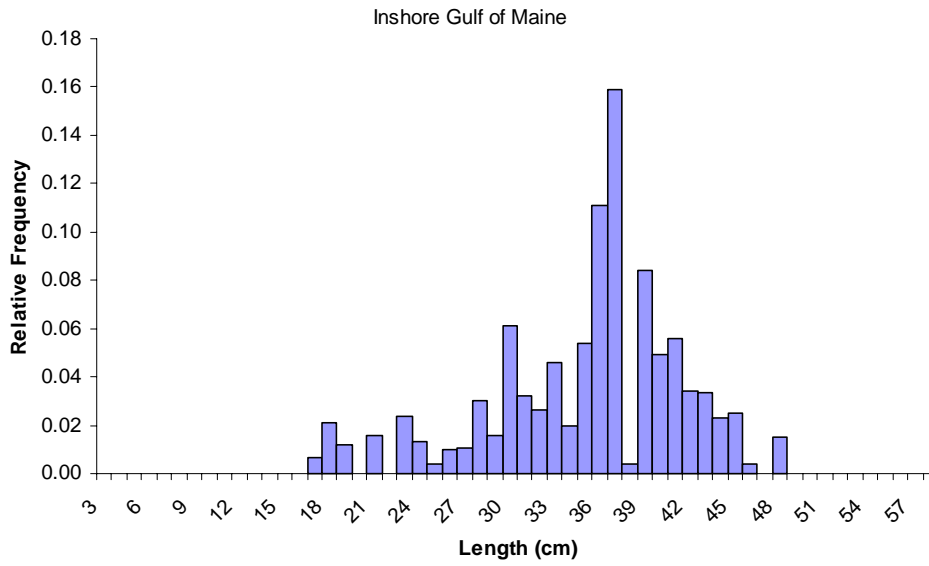


Figure A2.20. Size distribution of yellowtail flounder sampled from the NEFSC survey in the central and eastern Gulf of Maine, by decade.

