

FIG. 114.—Phytoplankton dominated by *Ceratium tripos* with fewer *C. fusus*. Surface haul in Massachusetts Bay, October 26, 1915 (station 10337). $\times 50$

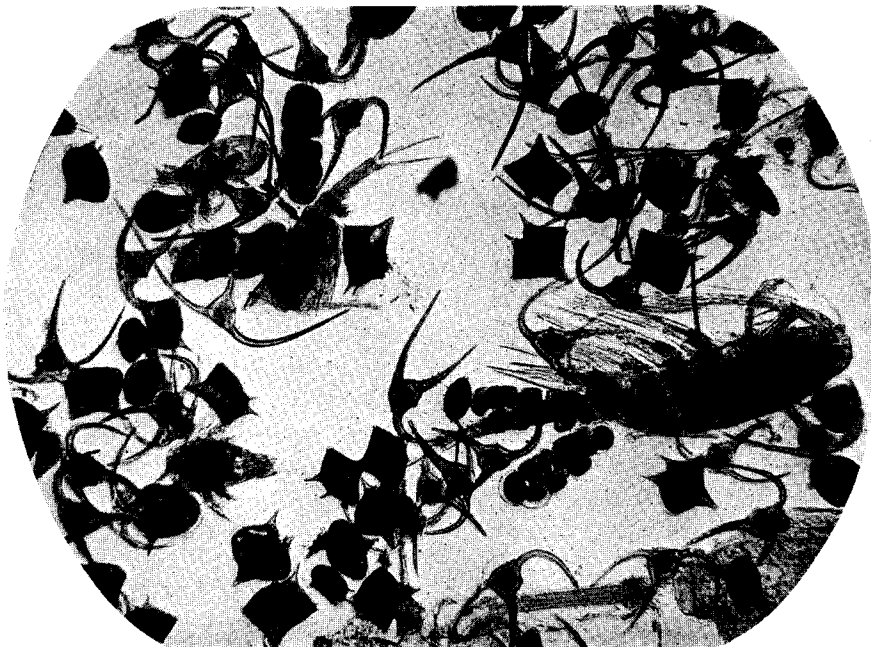


FIG. 115.—Peridinium plankton dominated by *Peridinium*, with *Ceratium longipes* and *C. arctica*. Surface haul, eastern side of basin of the Gulf of Maine, May 6, 1915 (station 10270). $\times 40$