



NOAA FISHERIES

Key Species

- Northeast groundfish
- Atlantic sea scallop
- Harbor porpoise
- Large Whales
- Sea turtles
- Harbor and gray seals

Key Collaborations

- New England Aquarium
- Gulf of Maine Research Institute
- Marine Biological Laboratory
- University of Massachusetts, Dartmouth
- Woods Hole Oceanographic Institution
- Center for Coastal Studies
- US Geological Survey
- Bureau of Ocean Energy Management
- International Fund for Animal Welfare
- Stellwagen Bank National Marine Sanctuary

Contact: Dr. Jon Hare, NEFSC Science and Research Director
jon.hare@noaa.gov

Dr. Susan Gardner, NEFSC Deputy Science and Research Director and Director, Woods Hole Laboratory
susan.gardner@noaa.gov

NEFSC Woods Hole Laboratory
166 Water Street
Woods Hole, MA 02543-1026

<http://www.nefsc.noaa.gov/nefsc/woodshole/>

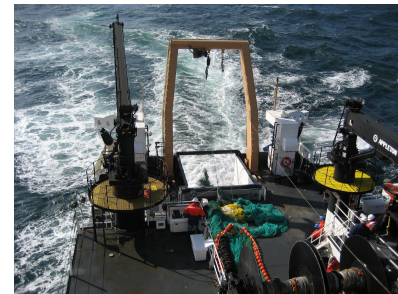
Woods Hole Laboratory

166 Water St., Woods Hole, MA

The Woods Hole Laboratory houses both research divisions and the Northeast Fisheries Science Center directorate, which provides overall management and direction for its five laboratories located from Orono, ME, to Sandy Hook, NJ. Laboratory staff conduct inshore fishery surveys and cooperative research on the 72-foot research vessel *Gloria Michelle* and use the 209-foot NOAA Ship *Henry B. Bigelow*, berthed at the Newport Naval Station in Newport, R.I., for offshore research programs. Other NOAA ships, aircraft, and contract vessels are also used for research and survey work.

Our Strengths

- Ecosystem monitoring
- Ocean circulation studies
- Long-term standardized resource surveys across the Northeast continental shelf, Cape Hatteras to the Scotian Shelf
- Documenting commercial fishing operations
- Biological sampling of fishery catch and discards
- Population biology studies of fish age and growth, predator-prey interactions, and food habits
- Statistical analysis and modeling of fishery and marine mammal populations
- Studying cetacean, pinniped, sea bird and marine turtle species
- Applied economic and socio-cultural research on commercial and recreational fisheries
- Modeling natural and anthropogenic factors affecting the Northeast Shelf ecosystem



Stern of the *Henry B. Bigelow*, with trawl net aboard. Photo credit: David Chevrier, NEFSC/NOAA

Our Place in the Nation

History - The Woods Hole Laboratory, founded in 1871, is the nation's oldest marine research station, and is the original laboratory of today's National Marine Fisheries Service and U.S. Fish and Wildlife Service. It also houses the nation's oldest public aquarium, the Woods Hole Science Aquarium, which is open to visitors year-round.

Location - Woods Hole, a village in the town of Falmouth, with a deep-water port and easy access to major oceanic features in the North Atlantic

Community - Woods Hole is internationally known as a marine science center of excellence. We collaborate with six science institutions located here as well as with researchers from other governmental agencies, academia, and international organizations.

New Directions

- How vulnerable are commercial and recreational fish stocks to warming ocean waters and a changing ecosystem?
- Expanded use of commercial fishery vessels in our research
- Incorporating environmental and other ecosystem data into stock assessments
- Use of video and acoustic data, and AUV technology to better understand fish and marine mammal behavior



Humpback whales in the Northwest Atlantic Ocean. Photo credit: Danielle Cholewiak, NEFSC/NOAA



Researcher monitors the heart rate of a loggerhead sea turtle during a tagging study in offshore mid-Atlantic waters. Photo credit: Heather Haas, NEFSC/NOAA