



**NOAA  
FISHERIES**

Northeast  
Fisheries  
Science Center

# Groundfish Operational Assessments 2015— Overview

Paul Rago  
Population Dynamics Branch

Clark Conference Room  
Woods Hole, MA

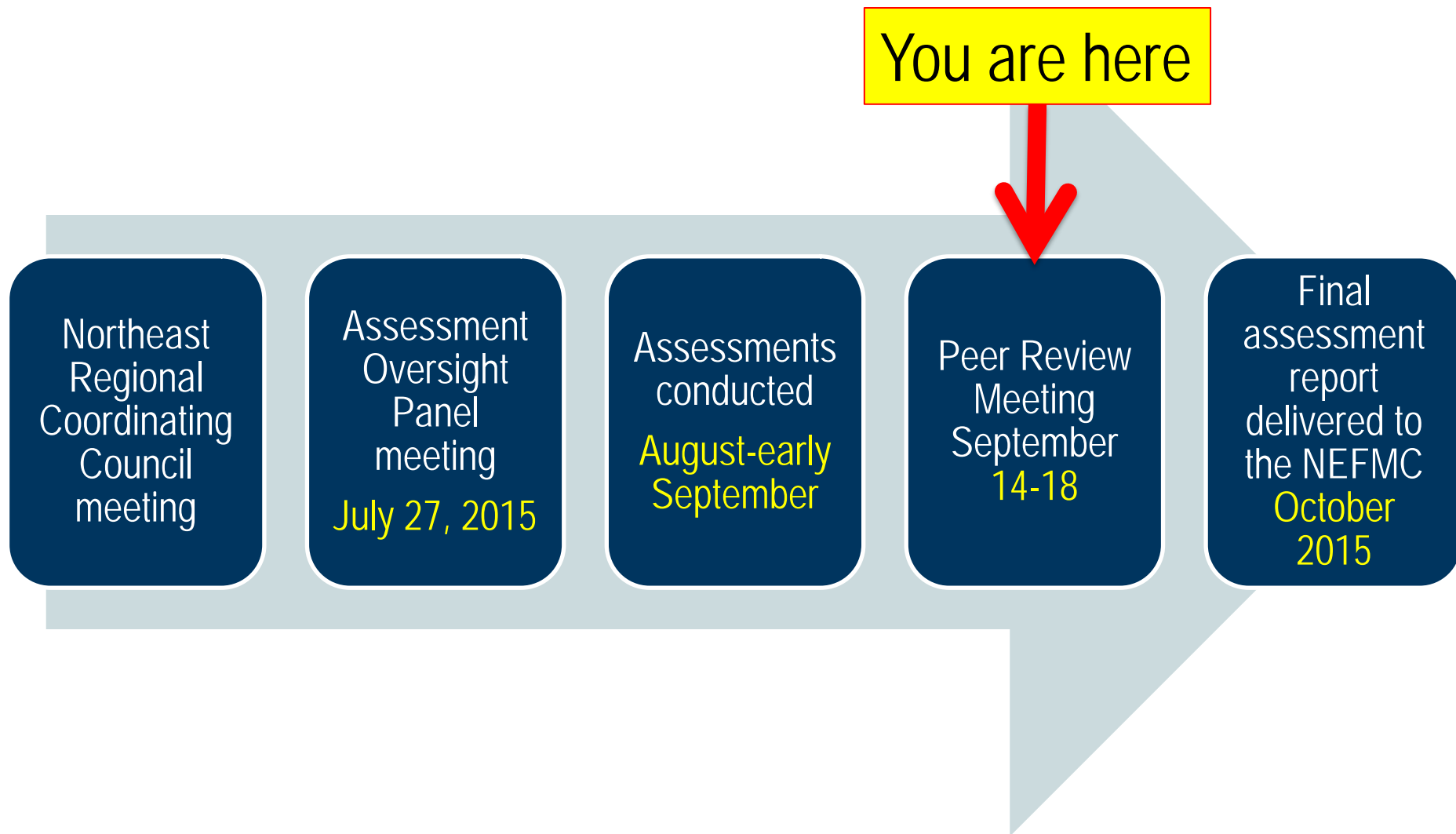
Population Dynamics Stock Assessment Lead Scientists  
<http://www.nefsc.noaa.gov/groundfish/operational-assessments-2015/>

September 14-18, 2015

# Goals for This Week's Webinar and Onsite Meeting

Review the 2015 groundfish assessments

Prepare a summary report of key findings by Peer Review Panel



<http://www.nefsc.noaa.gov/groundfish/operational-assessments-2015/>

# *Generic Terms of Reference*

- Update all fishery-dependent data (landings, discards, catch-at-age, etc.) and all fishery-independent data (research survey information) used as inputs in the baseline model or in the last operational assessment.
- Estimate fishing mortality and stock size for the current year, and update estimates of these parameters in previous years, if these have been revised.
- Identify and quantify data and model uncertainty that can be considered for setting Acceptable Biological Catch limits.
- If appropriate, update the values of biological reference points (BRPs).
- Evaluate stock status with respect to updated status determination criteria.
- Perform short-term projections; compare results to rebuilding schedules.
- Comment on whether assessment diagnostics—or the availability of new types of assessment input data—indicate that a new assessment approach is warranted (i.e., referral to the research track).
- Should the baseline model fail when applied in the operational assessment, provide guidance on how stock status might be evaluated. Should an alternative assessment approach not be readily available, provide guidance on the type of scientific and management advice that can be.



# *Reviewer's Reports on Each Stock*

- Acceptability (or not) of assessment as scientific basis for management advice.
- Recommendation of alternative basis for catch if assessment is not accepted.
- Key sources of uncertainty
- Research needs, particularly if a benchmark is recommended.

**NEFSC Groundfish Operational Assessments**

NOAA FISHERIES

Home Stock Status Stocks in Review Inside the Assessments Timeline **Data** Meetings NEFSC Links

**Peer Review Meeting Agenda and Materials**

Webinar access and teleconference details

**Data Portal**

Day/Date	Time	Activity	Lead	Working Papers
Monday, Sept 14	9:00 AM	Welcome and Introductions	Paul Rago	NRCC letter Summaries of recent stock assessments Industry Outreach Meetings Summary
	9:15 AM	Overview of Process	Paul Rago/Steve Cadrin	
	9:30 AM	<b>Gulf of Maine Cod Presentation</b>	Michael Palmer	2015 GOM Cod WP Updated 9/10/2015
	10:45 AM	Break		
	11:00 AM	Gulf of Maine Cod (cont)	Michael Palmer	
	11:30 AM	<b>Georges Bank Cod</b>	Loretta O'Brien	2015 GB Cod WP Updated 9/8/2015
	12:30 PM	Lunch		
	1:30 PM	Georges Bank Cod (cont)	Loretta O'Brien	
	2:15 PM	<b>Georges Bank Haddock Presentation</b>	Liz Brooks	2015 GB Haddock WP
	3:15 PM	Break		

- Data Portal
- Background
- Working Papers
- Presentations

# DATA PORTAL—access to all data+ ancillary tables, figures, model I/O, maps, background documents

NOAA HOME WEATHER OCEANS FISHERIES CHARTING SATELLITES CLIMATE RESEARCH COASTS CAREERS Search NEFSC GO!

**NOAA FISHERIES SERVICE** Stock Assessment Workshop (SAW)  
Northeast Fisheries Science Center  
NATIONAL OCEANIC AND ATMOSPHERIC ADMINISTRATION

Assessment Search Tool  
SAW and SARC Reports  
Related Assessments  
Related Links  
SAW Home  
Dr. James Weinberg, Chair

### Stock Assessment Support Information (SASINF)

*Notice: The findings and conclusions in the new papers have not been formally disseminated by NMFS and should not be construed to represent any agency determination or policy.*

Please select your search options and then click the SEARCH button.

**Please note:** Files are current as of the date and time you that you download them. There may be subsequent revisions until the assessments are final.

Assessment Year: 2015  
Species Name: Atlantic cod  
Stock Area: Gulf of Maine  
Information Type: Select All

SEARCH

NEFSC Links  
NEFSC Home Page  
Greater Atlantic Regional Fisheries Office  
A-Z Index  
Privacy Policy  
About Us  
Contact Us  
Frequently Asked Questions (FAQs)

NOAA Fisheries/DOC  
Fisheries Home  
Forms  
About NMFS  
Contact NMFS  
Information Quality  
FOIA  
About DOC  
USA.gov

www.nefsc.noaa.gov NMFS Search Link Disclaimer webMASTER Privacy Policy



# Data Portal Output

## Stock Assessment Support Information (SASINF)

### Search Criteria

Assessment Year  
Species  
Stock  
Information Type

### OUTPUTS

Zip File=Everything  
Assessment Report  
Figures  
Tables  
Model info: inputs,  
outputs, diagnostics  
Maps—Survey  
Maps –Commercial  
Background Reports

www.nefsc.noaa.gov/saw/sasi/sasi\_report.php

NOAA HOME WEATHER OCEANS FISHERIES CHARTING SATELLITES CLIMATE RESEARCH COASTS CAREERS

**NOAA FISHERIES SERVICE** Stock Assessment Workshop (SAW)  
Northeast Fisheries Science Center  
NATIONAL OCEANIC AND ATMOSPHERIC ADMINISTRATION

### Stock Assessment Support Information (SASINF)

*Notice: The findings and conclusions in the new papers have not been formally disseminated by NMFS and should not be construed to represent any agency determination or policy.*

Search Criteria Used

Assessment Year: 2015  
Species Name: Atlantic cod  
Stock Area: Gulf of Maine  
Information Type: All

Information Type	File Name
All Files	<a href="#">2015_COD_GM_82486.zip</a>
Assessment Report	<a href="#">2015_COD_GM_Assessment_Report_20150910.pdf</a>
Figures	<a href="#">2015_COD_GM_FIG_redirect_notice.pdf</a>
Tables	<a href="#">2015_COD_GM_TAB_redirect_notice.pdf</a>
Models	<a href="#">2015_COD_GM_MOD_AGEPRO_PROJECT_M02_75FMSY.inp</a>
Models	<a href="#">2015_COD_GM_MOD_AGEPRO_PROJECT_M02_75FMSY.out</a>
Models	<a href="#">2015_COD_GM_MOD_AGEPRO_PROJECT_M02_RETRO_75FMSY.inp</a>
Models	<a href="#">2015_COD_GM_MOD_AGEPRO_PROJECT_M02_RETRO_75FMSY.out</a>
Models	<a href="#">2015_COD_GM_MOD_AGEPRO_PROJECT_MRAMP_M02_75FMSY.inp</a>
Models	<a href="#">2015_COD_GM_MOD_AGEPRO_PROJECT_MRAMP_M02_75FMSY.out</a>
Models	<a href="#">2015_COD_GM_MOD_AGEPRO_PROJECT_MRAMP_M04_75FMSY.inp</a>
Models	<a href="#">2015_COD_GM_MOD_AGEPRO_PROJECT_MRAMP_M04_75FMSY.out</a>
Models	<a href="#">2015_COD_GM_MOD_AGEPRO_REFPPOINTS_M02.inp</a>



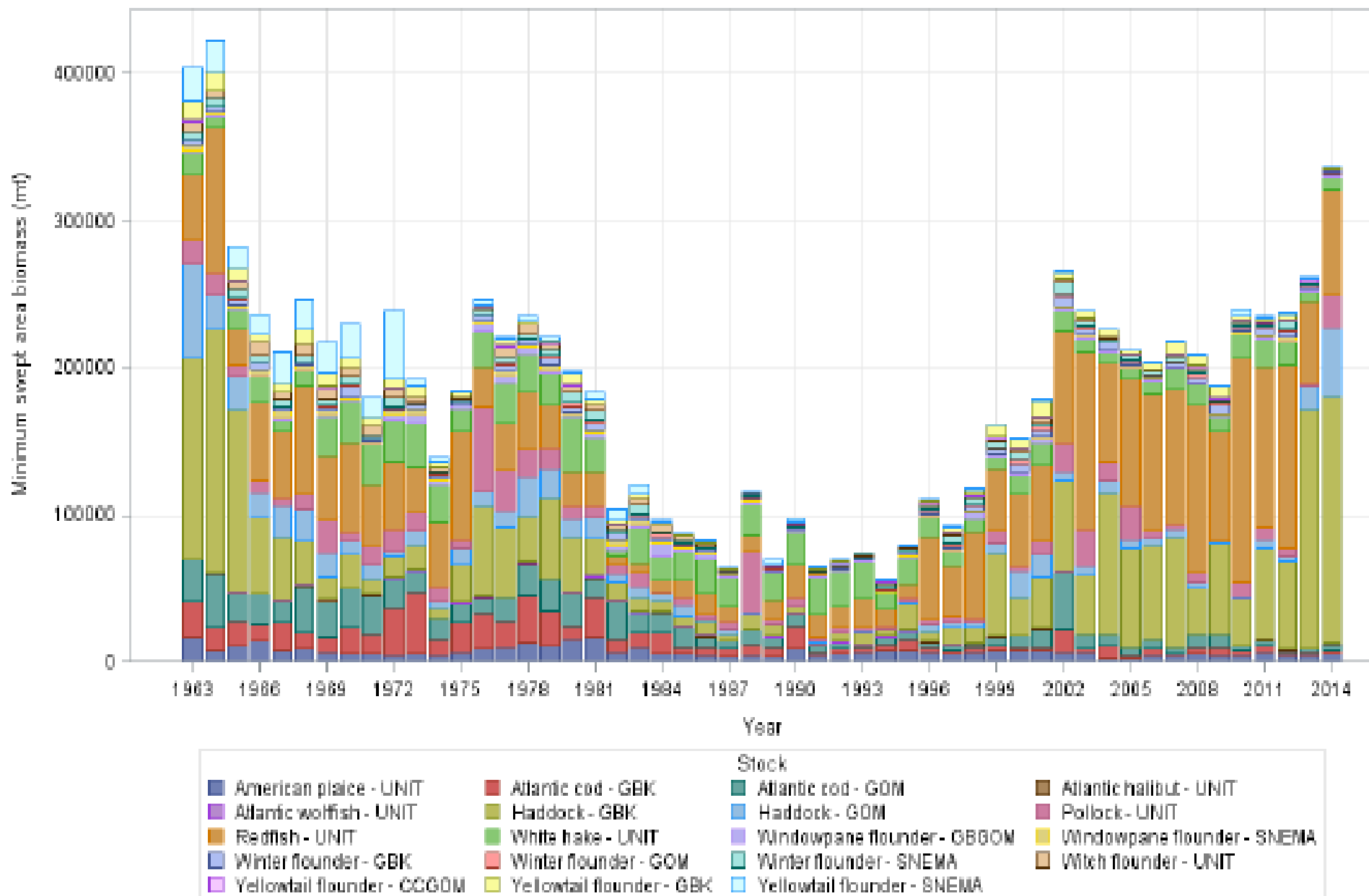
# Important Background/ Process Documents

- Guidance from the NRCC (letter of June 30, 2015)
- Summary of Meetings with Industry (July 22, 2015)
- Minutes of the Assessment Oversight Panel (July 27, 2015)
- Executive Summary section of the Ecosystem Status Report for the Northeast Large Marine Ecosystem.  
<http://www.nefsc.noaa.gov/ecosys/ecosystem-status-report/executive-summary.html>
- A Synoptic View of Stock Status for 20 Northeast Groundfish stocks in 2015

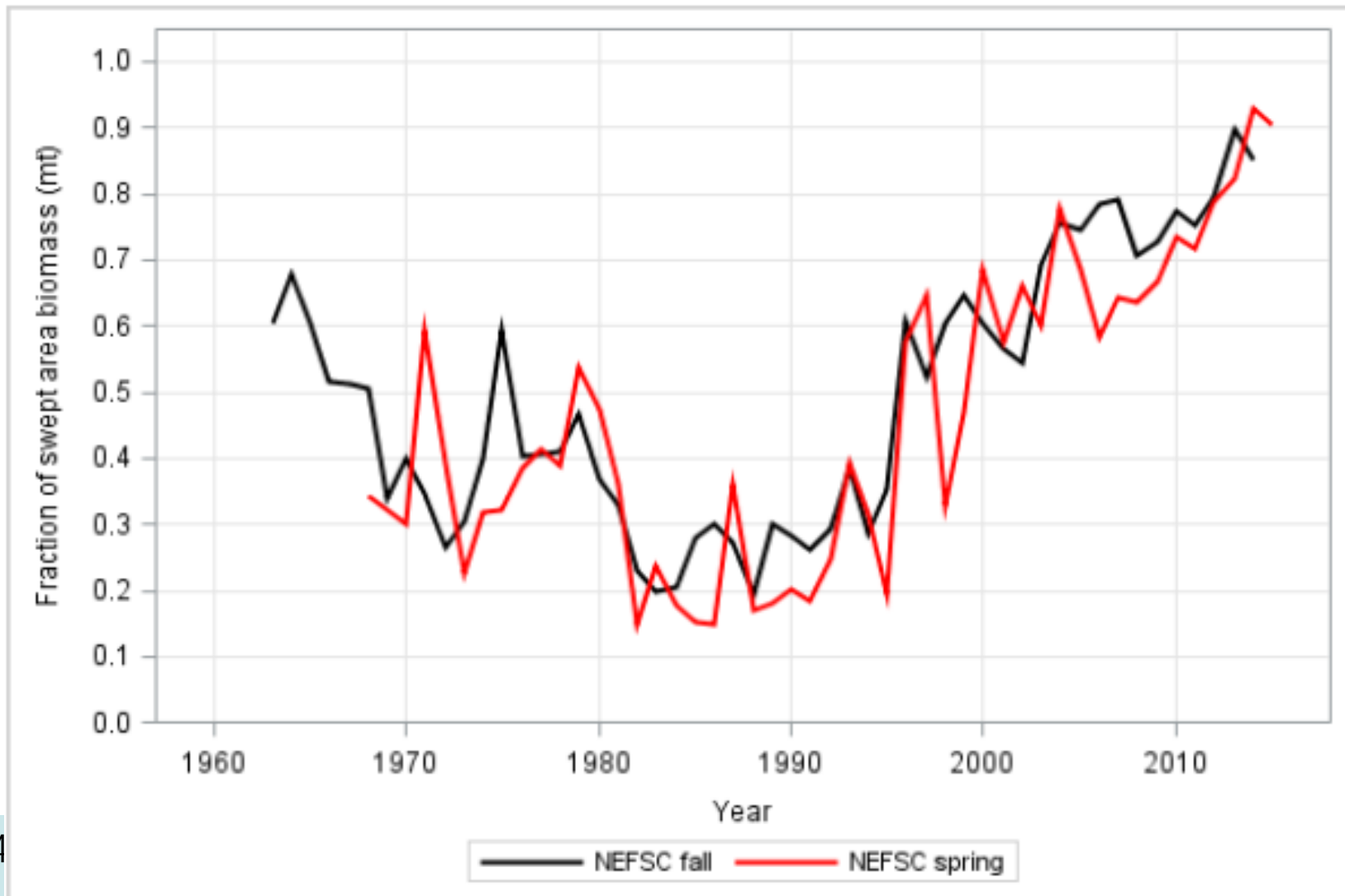
# A Synoptic View of Stock Status for 20 Northeast Groundfish stocks in 2015 (DRAFT)

- Summary of key findings based on pre-review documents
- SUBJECT TO CHANGE
- Thumbnail summary of retrospective adjustments.
- Status summary
- Survey and biological trends

# Fall Bottom Trawl Survey Swept Area Biomass Estimates



Fraction of the total groundfish swept minimum swept area biomass contributed by Georges Bank and Gulf of Maine haddock and Redfish based on the NEFSC spring and fall bottom trawl surveys.



For the remainder of the week, we'll fill in the details for the remaining stocks...